



## Carson City Planning Division

2621 Northgate Lane, Suite 62

Carson City, Nevada 89706

(775) 887-2180

[Plandiv@ci.carson-city.nv.us](mailto:Plandiv@ci.carson-city.nv.us)

[www.carson-city.nv.us](http://www.carson-city.nv.us)

### MEMORANDUM

Historic Resources Commission meeting of April 09, 2009

**TO:** Historic Resources Commission

**Item F-4**

**FROM:** Jennifer Pruitt, Principal Planner *J.P.*

**DATE:** April 09, 2009

**SUBJECT:** **HRC-09-027** – Presentation and action to provide comments to the Nevada State Prison and State Public Works Board (SPWB) regarding the Nevada State Prison's Warden House possible demolition.

**Recommended Motion:** I move to direct staff to forward public comments by minutes from this meeting to the Nevada State Prison and State Public Works Board (SPWB) regarding the possibility of the demolition of the Warden's House.

#### **Discussion:**

Near the Lompa Ranch lies Carson City's other major example of institutional architecture. The Nevada State Prison (NSP), located in Carson City, Nevada, is one of the oldest prisons still in operation in the United States. The Nevada State Prison was established in 1862 when the Nevada Legislature purchased the Warm Springs Hotel and 20 acres of land for \$80,000, NSP has been in continuous operation since this time. Abraham Curry, who owned the hotel, was appointed as the first warden. The site includes the stone quarry that supplied building material for the prison as well as many of the major public buildings and houses in Carson City, including the State Capital complex and the Old Mint, and the prisoners' cemetery.

There is very little known about the structure commonly known as the Warden's House located at the Nevada State Prison. The structure was constructed from materials harvested from the stone quarry that supplied building materials for the above mentioned historic structures. Staff has provided pictures for the Commission's use during discussion of the possibility of the demolition of the historic structure (see attached photos).



07/19/2006 2:17 pm



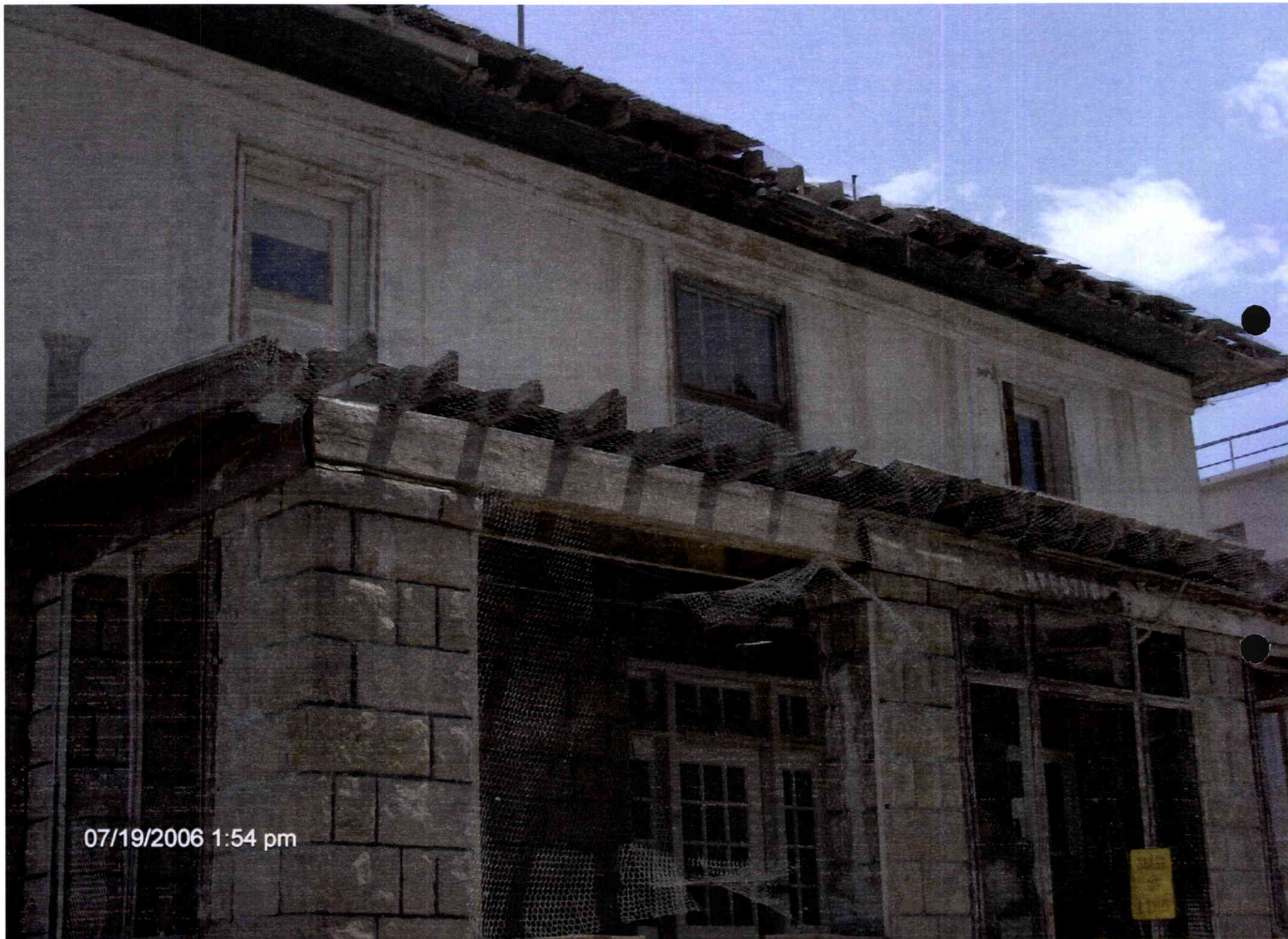


07/19/2006 1:56 pm







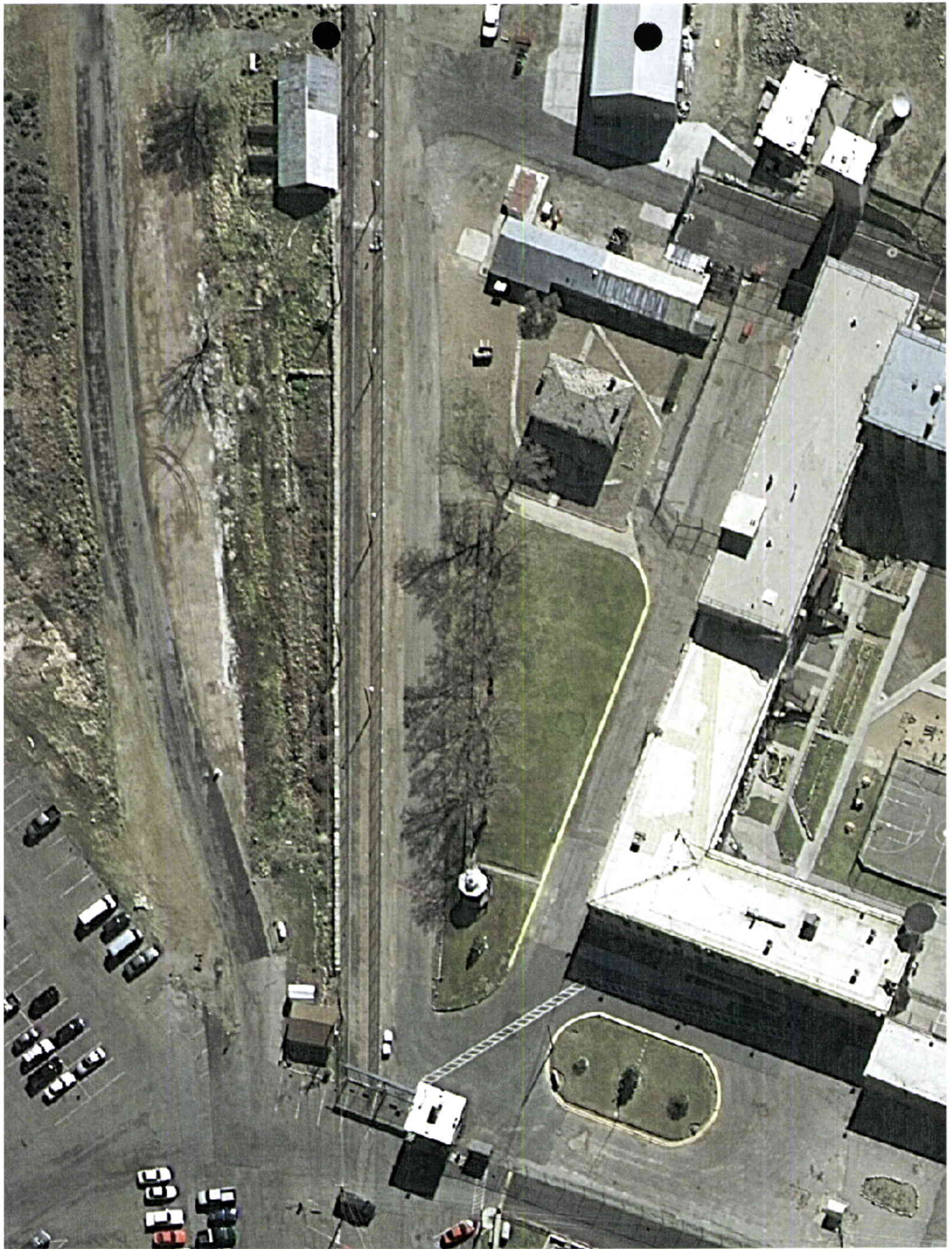






07/19/2006 1:52 pm















# **Nevada State Prison**

**3301 E. 5th St.**

**P.O. Box 607**

**Carson City, Nevada 89702**

**Phone: 775-882-8588**



## **Administrative Staff:**

Gregory Smith, Acting Warden

Adam Watson, Associate Warden for Operations

James Baca, Associate Warden for Programs

## **Historical:**

The Nevada State Prison, located in Carson City, Nevada, is one of the oldest prisons still in operation in the United States. Established in 1862 when the Nevada Legislature purchased the Warm Springs Hotel and 20 acres of land for \$80,000, NSP has been in continuous operation since this time. Abraham Curry, who owned the hotel, was appointed as the first warden.

The original structure burned down in 1867. Rock was quarried at this location to build a new facility as well as several other state buildings including the State



Capitol Building. On several occasions, NSP has been remodeled and expanded. Recently the culinary was completely remodeled and expanded and underground utilities replaced.

The Nevada State Prison operated as a maximum security prison until the Ely State Prison opened in 1989. Although inmates under the sentence of death are incarcerated at the Ely State Prison executions are still conducted at the Nevada State Prison.

The Nevada State Prison has a fascinating history. Did you know –

- Since 1928 all license plates issued in the State of Nevada have been manufactured at the Nevada State Prison?
- Coincidentally with the establishment of legalized gambling in the State of Nevada in 1932 legalized and open gambling operated in the “NSP Bull Pen”, from 1932 until 1967.
- Nevada’s Lieutenant Governors were also Wardens of the State Prison? In 1872 Lieutenant Governor Denver refused to yield the prison to the new Lieutenant Governor P.C. Hyman, causing the Governor to send 60 men and artillery to force him to do so – he did peacefully surrender.

## **Staffing:**

The Nevada State Prison has a staff of 211:

- Administration 3
- Protective Services 13
- Correctional Officers 168
- Professional 7
- Skilled Craft 10
- Food Services 4
- Clerical 6

## **Capacity:**

Nevada State Prison’s total capacity is 841 inmates.

## **Visiting:**

General Population:

- Friday, Saturday, and Sunday 8:00am-2:30pm

Administrative Segregation:



- By appointment only-(775) 887-3462

Disciplinary Segregation:

- By appointment only-(775) 887-3462

\*Visitors may not arrive at the institution before 8:00 a.m. Entry into the Visiting Room is not permitted between 10:30 a.m. and 12:00 noon, or after 1:30 p.m. Visitors must exit the Visiting Room by 2:30 p.m.

## **Programs: Vocational Training, Educational Opportunities, and Treatment Services**

Nevada State Prison (NSP) offers a wide range of programs for all of the inmate population:

Vocational Training:

- Forklift Training for minimum custody inmates, mattress manufacturing skills in the Mattress Factory; heavy machinery in both the License Plate Factory and the Bookbindery/Print Shop.

Educational Opportunities:

- Inmates have the opportunity to enroll in educational classes in pursuit of a GED or high school diploma. College classes through Western Nevada College are offered.

Treatment Services:

- NSP also has its own medical and mental health staff serving the inmate population. A wide range of psychology programs are also available to inmates including parenting, anger management and individual counseling.

Additionally, there is an extensive inmate recreational program including organized sport leagues, football, basketball, and soccer. Any general population inmate may participate in these activities.

Religious programs of multiple faiths are available for inmates to participate. Recently, NSP remodeled the chapel to enhance religious services.

## **Prison Industries:**

Currently there are over 50 inmates employed in Prison Industries:



- Bookbindery and Print Shop: 35
- Dept. of Motor Vehicles License Plate Factory: 19