

OPEN SPACE ADVISORY COMMITTEE
STAFF REPORT

MEETING DATE: December 16, 2013

AGENDA ITEM NUMBER: 3A

STAFF: Juan F. Guzman, Open Space Manager
Jeff Potter, Muscle-Powered

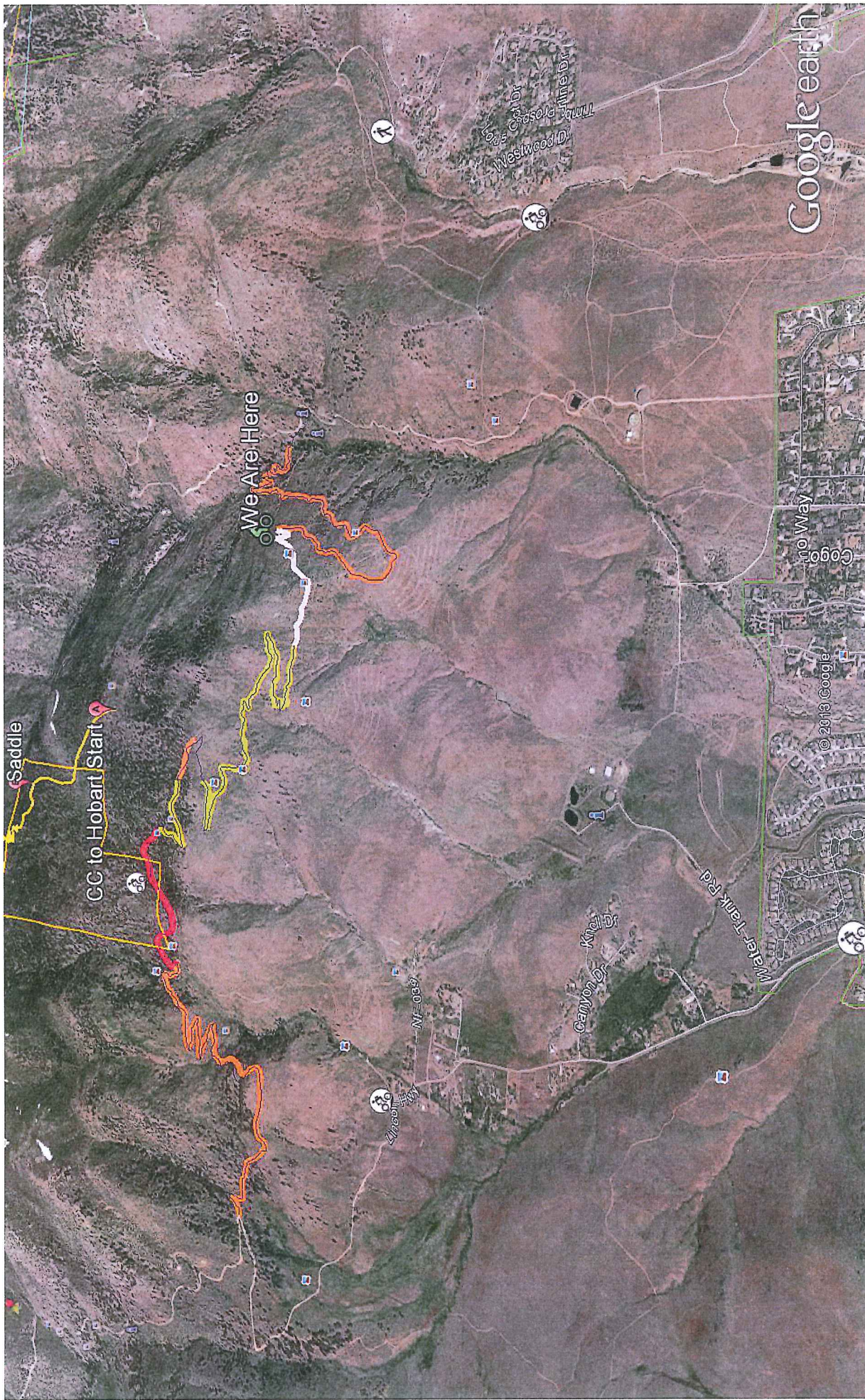


REQUEST: Discussion only regarding work conducted throughout 2013 for the Ash Canyon to King Canyon Trail Project.

GENERAL DISCUSSION: Construction of the Kings Canyon to Ash Canyon Trail has terminated for the season. Muscle-Powered has focused their efforts from the Ash Canyon Road south and has spent 1500 volunteer hours. Great Basin Institute has focused their efforts from the Waterfall Road near the center area of the project. Construction will resume weather permitting after the winter around May of 2014. Construction of the trail next year will be again strictly volunteer based, so help will be needed and appreciated. When completed this will be the longest continuous trail crossing the east front of the Carson Range above Carson City. The Kings Canyon to Ash Canyon Trail will be an important recreational access for mountain biking, and hiking for residents and visitors of Carson City. Jeff Potter of Muscle Powered who has headed up this project will provide a power point presentation for the Commission.

The attached maps shows the entire trail and close-up section of trail constructed by Muscle-Powered highlighted in orange, and the section of trail constructed by the Great Basin Crews highlighted in yellow. Approximately 1500 feet, illustrated in white is separating the segments constructed by Muscle-Powered and Great Basin.

RECOMMENDED ACTION: This item is for discussion only. No action may be taken at this time.



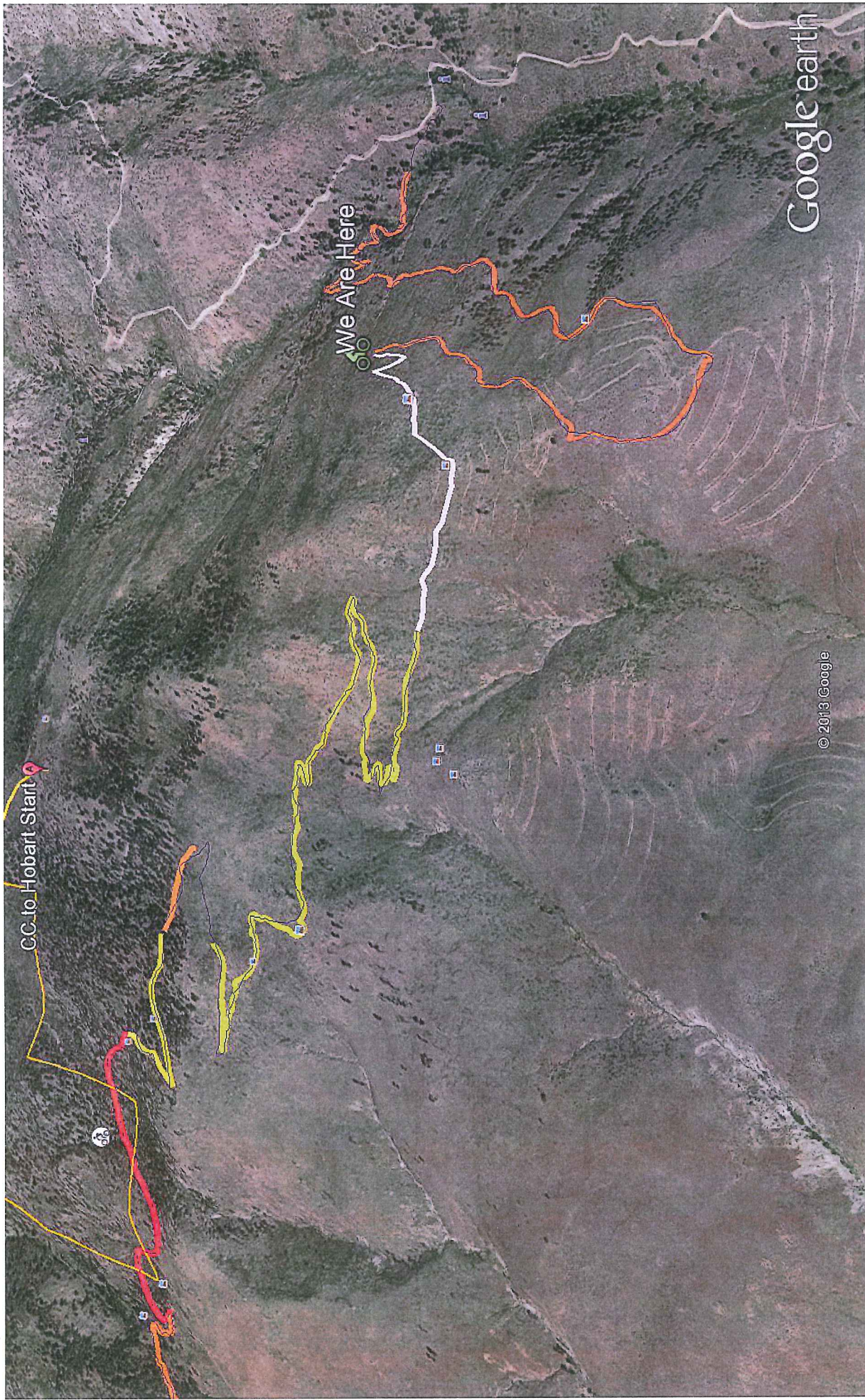
Google earth

miles
km

1

2





CC to Hobart Start

We Are Here

Google earth

© 2013 Google

Google earth

feet
km

3000
1

