

**PARKS AND RECREATION COMMISSION
STAFF REPORT**

MEETING DATE: May 6, 2014

AGENDA ITEM NUMBER: 4C

STAFF: Juan F. Guzman, Open Space Manager

REQUEST: Update on a \$34,500 Recreational Trails Program grant from Nevada State Parks for a non-motorized multipurpose bridge on the Ash Canyon to Kings Canyon Trail.

GENERAL DISCUSSION:

On April 4, 2014 staff and Chas Macquarie of Lumos and Associates and Muscle Powered presented a grant proposal for the construction of a bridge on Carson City land for the Ash Canyon to Kings Canyon Trail to the Recreational Trails Program Grants Committee. We were successful in obtaining funding approval for \$34,500 just \$500 short of the funding requested. The bridge design at approximately 6 feet in width by 20 feet in length will facilitate the crossing of Ash Canyon Creek by equestrian, hikers, and cyclists.

Please refer to the attached project budget that must be revised to reflect that the monies approved by the grant are for \$500 less than requested. Also, please find attached a location map for the bridge. Staff has solicited the assistance of the Nevada Air National Guard in order to facilitate the transportation of the bridge kit and rock for the gabions abutments to the site. A private contractor will be responsible for the approved building permit and site assembly and installation. Lumos and Associates as well as Muscled Powered have committed to donate time and professional services to facilitate this project. A Cultural Resources Class 3 Survey was donated by the Archeologist of Vidler Water Company, James Hutchins PhD. The effort to purchase and install this bride is also being coordinated with the effort to install a similar bridge on Forest Service lands at North Kings Canyon.

Staff is very excited to report on behalf of Muscle Powered that finally the season is here for the Ash Canyon to Kings Canyon Trail construction to resume with volunteers. All of our trail days in May will be at the Kings Canyon access point (Hairpin Turn). To get there take Kings Canyon Road approximately 1-3/4 miles beyond the Waterfall Trailhead and park at the hairpin turn. Parking is limited at the turn so you may have to park along the road. This section of Kings Canyon Road sustained quite a bit of damage from our winter rains, a mid-clearance vehicle should be able to make the journey. Please RSVP, at jeffpotter@musclepowered.org for all the work dates you plan on attending! This way I'll have all the tools and hard hats needed to keep everyone working.

Required Gear:

Muscle Powered will provide the tools and hard hats. You need to bring:

Fully enclosed hiking/work boots/shoes

Long pants

Long sleeve shirt

Gloves

Glasses, safety goggles or sunglasses

It is recommended that you bring water and snacks so you stay healthy and strong while working.

Work days:

Friday, May 2nd

Meet at the hairpin turn on Kings Canyon Rd at 5:15 p.m.

Saturday, May 3rd

Meet at the hairpin turn on Kings Canyon Rd at 5:15 p.m.

Monday, May 5th

Meet at the hairpin turn on Kings Canyon Rd at 9:00 a.m.

Regarding the National Trails Day, June 7, 2014.

The plan is to muster at the Waterfall Trailhead at the end of paved Kings Canyon Road at 8:00 a.m., encouraging attendees to arrive early to speed up sign in. After sign in and safety talk we'll ask volunteers to carpool to the worksite parking area which is 1-3/4 miles beyond the Waterfall Trailhead. We will hike to the worksite, approximately 1000-2000', and regroup for a tool talk. After the tool talk, crew leaders will take their crews to an assigned location and get busy. We will break for lunch around 11:30 or 12:00 p.m. (Lunch should arrive by then). We will work for a couple more hours after lunch and at the end of the work day we'll regroup and hike back to our vehicles, and then onto the Waterfall Trailhead.

Lunch will be provided by Comma Coffee, from a donation by Galena Fest and Eagle Vision, and will include a sandwich, chips, cookie, and fruit.

RECOMMENDED ACTION: No action may be taken. This item is for discussion only.

**Nevada Recreational Trails Grant Application
FY2014**

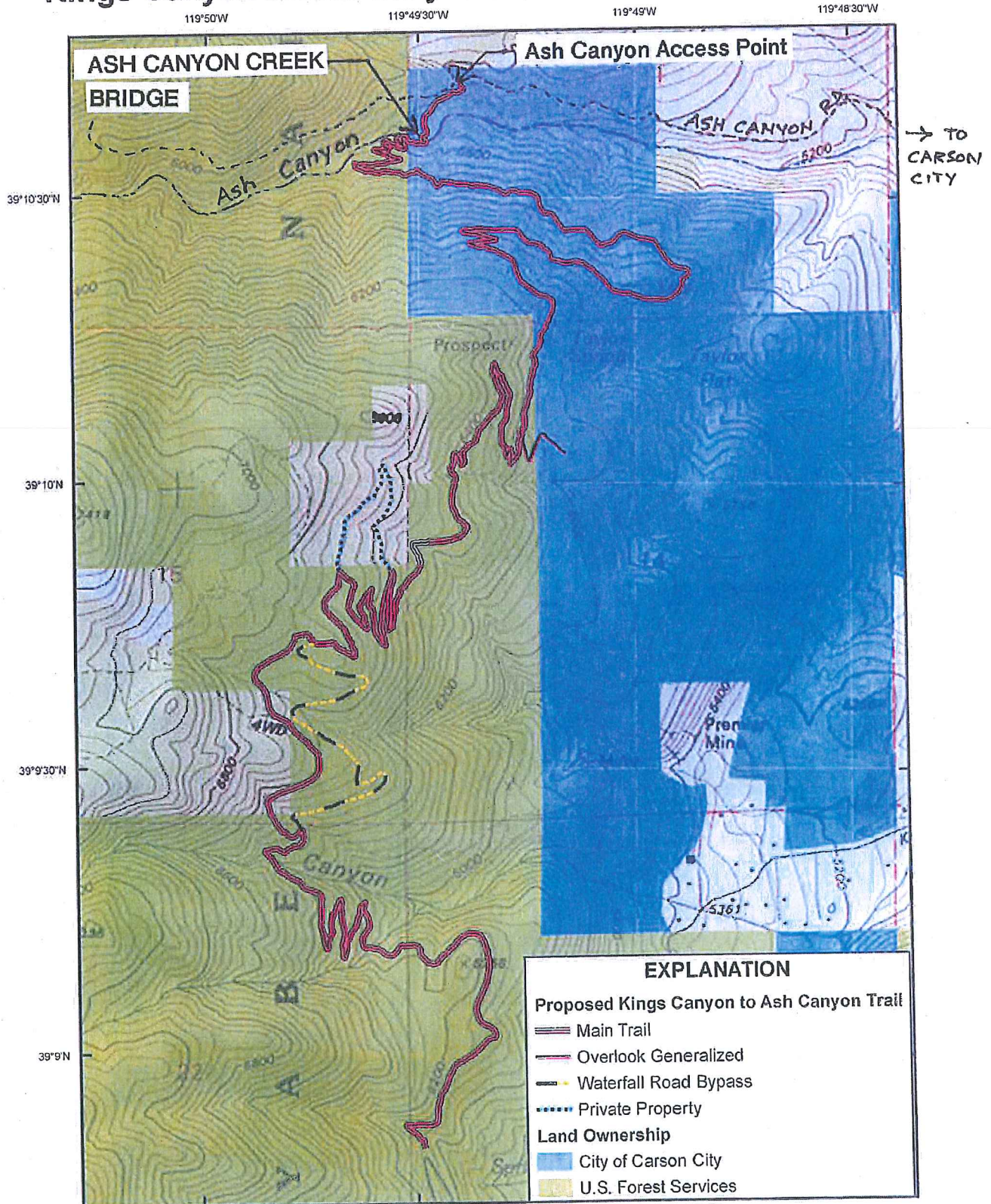
Applicant: Carson City Parks and Recreation Department

Project Name: Ash Canyon Creek Bridge

Item Description	Federal Grant	Federal Match	Non-Federal Match	Total
Design and Engineering Costs (Breakdown costs & purpose)			Site Survey, hydraulic analysis, bridge and site design & drafting, meetings: 94 hrs x \$21.79/hr = \$2,048	\$2,048
Planning costs				
Direct labor costs				
Volunteer or donated labor # hrs unskilled labor @\$15/hr = # hrs skilled labor @\$21.79 /hr =			Layout of bridge, excavation and construction of gabion abutments & bridge approaches: 370 hrs x \$15/hr = \$5,550 75 hrs x \$21.79/hr = \$1,634	\$7,184
Purchase or rental of equipment				
Construction or other Contract Attach a copy of estimate or identify what contract will include	Construction contract with Horizon Construction to transport bridge materials to site, assemble bridge & construct abutments: \$18,000			\$18,000
Purchase of Materials List items & cost of each item or group of items	Prefabricated bridge kit, delivered: \$11,000 Gabion baskets and rock: \$3,000 1 Trailhead Kiosk and 1 trailhead sign: \$3,000			\$17,000
Vehicle Gas and Maintenance				
Other: be specific				
Totals	\$35,000		\$9,232	\$44,232
Percentages	79%		21%	100%

Note: required match is 20% for non-motorized and 5% for motorized. Federal dollars cannot exceed 95% of the project. Only eligible costs directly related to the project can be used as match.

Kings Canyon to Ash Canyon Non-Motorized Multi-Use Trail



Base from ESRI ArcGIS Online Map service
http://services.arcgisonline.com/arcgis/service:USA_Topo_Maps, 2011, State Plane Nevada West
 North American Datum of 1983 (CORS96), Vertical

ASH CANYON BRIDGE, CARSON CITY

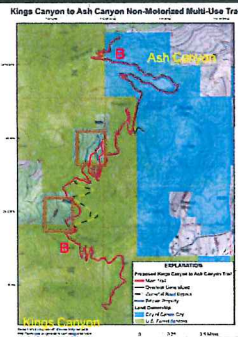


Presented By:
Juan Guzman & Chas Macquarie



THE ASH TO KINGS CANYON TRAIL

- Joint effort between Carson City, Muscle Powered, USFS & GBI
- Much of trail is completed
- Remainder will be built in 2014
- Two year-round creeks that require bridges
 - Ash Canyon Creek on City Property
 - It will be modified USFS Timber Stringer Trail Bridge, 20 ft. span.
- Trailhead Kiosk & Signage



BRIDGE DEMAND, USE & ACCESSIBILITY

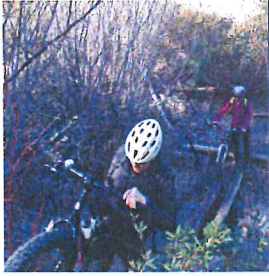


Existing Situation

- Clearly a need for a real bridge
- Trail is identified in the CC UPMP
- It provides key linkage to other trails and recreational areas
- There is strong community support
- It will facilitate safe use by more people and extend the use season
- It will make it safer for people with disabilities

PLANNING, DESIGN, DEVELOPMENT & MAINTENANCE

- Compatible with adjacent land uses and physical setting
- Sustainable and long-lasting design
- Will reduce impacts to the riparian zone
- Proven USFS design with difficult access to site
- grant funding will be matched by volunteer labor to construct abutments
- Strong inter-agency cooperation between Carson City and USFS




PROPOSED BRIDGE & KIOSK



Modified Standard USFS Sawn Timber Stringer Bridge

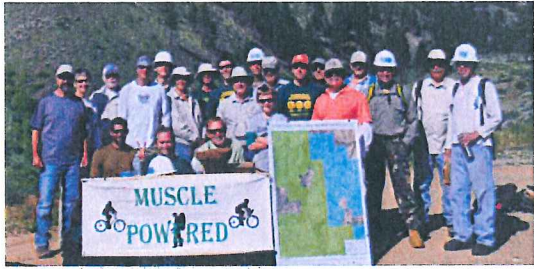
BUDGET INFORMATION

Bridge Kit	\$10,500	
Gabions & Rock	\$3,000	
Trailhead Kiosk & Sign	\$3,000	
Construction Contract	<u>\$18,000</u>	
Total Grant Request	\$34,000	79%
Design & Engineering	\$2,048	
Volunteer Labor	<u>\$7,184</u>	
Total Match	\$9,232	21%

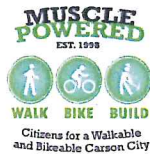


IT'S ALL ABOUT COMMUNITY

- What started as just the desire to ride fun trail
- Has become a great way build community together



Q & A



2013 MP TRAIL STATISTICS



- 120 Volunteers, 59 Mountain Bikers, 22 Hikers, 11 Runners, 30 Unknown preference - Scouts, Redrock Dental employees, etc
- 121 work days, most of which were 2-3 hr evening work parties.
- 2,758 MP volunteer hours – 2013
- 1.25 miles – 2013 Completed by MP on CC and PP sections
- NCC Crews completed 1.7 miles in 2012-2013
- 0.75 miles of CC and Private Property trail remaining
- 1.6 miles of USFS trail remaining
- 2 bridges to build
- Signage
