

An aerial photograph of Carson City, Nevada, showing a winding road through a valley with green trees and buildings. In the background, there are blue mountains under a sky with light clouds.

TRAFCC

(Transportation Resource Advisory Forum for Carson City)

January 17, 2017

Overview

- Welcome and introductions
- Completed and ongoing projects
- Additional projects to be complete by June
- New source of Federal funds (STBG)
- Pavement preservation projects for 17/18
- Discuss costs to maintain City streets
- Discuss TRAFCC members' interests for future topics

Project Update – Completed and Ongoing Projects

- Winnie Lane sidewalk project – completed
- Flashing Yellow Arrows – signal improvements
 - Carson/ Winnie
 - Roop/ Robinson
- New traffic signal – College/Research
 - Per agreement, RTC to pay \$50,000/year until 50% of cost repaid to Maverik
- Battery back-ups at traffic signals

College/Research Signal

Activated December 22, 2016



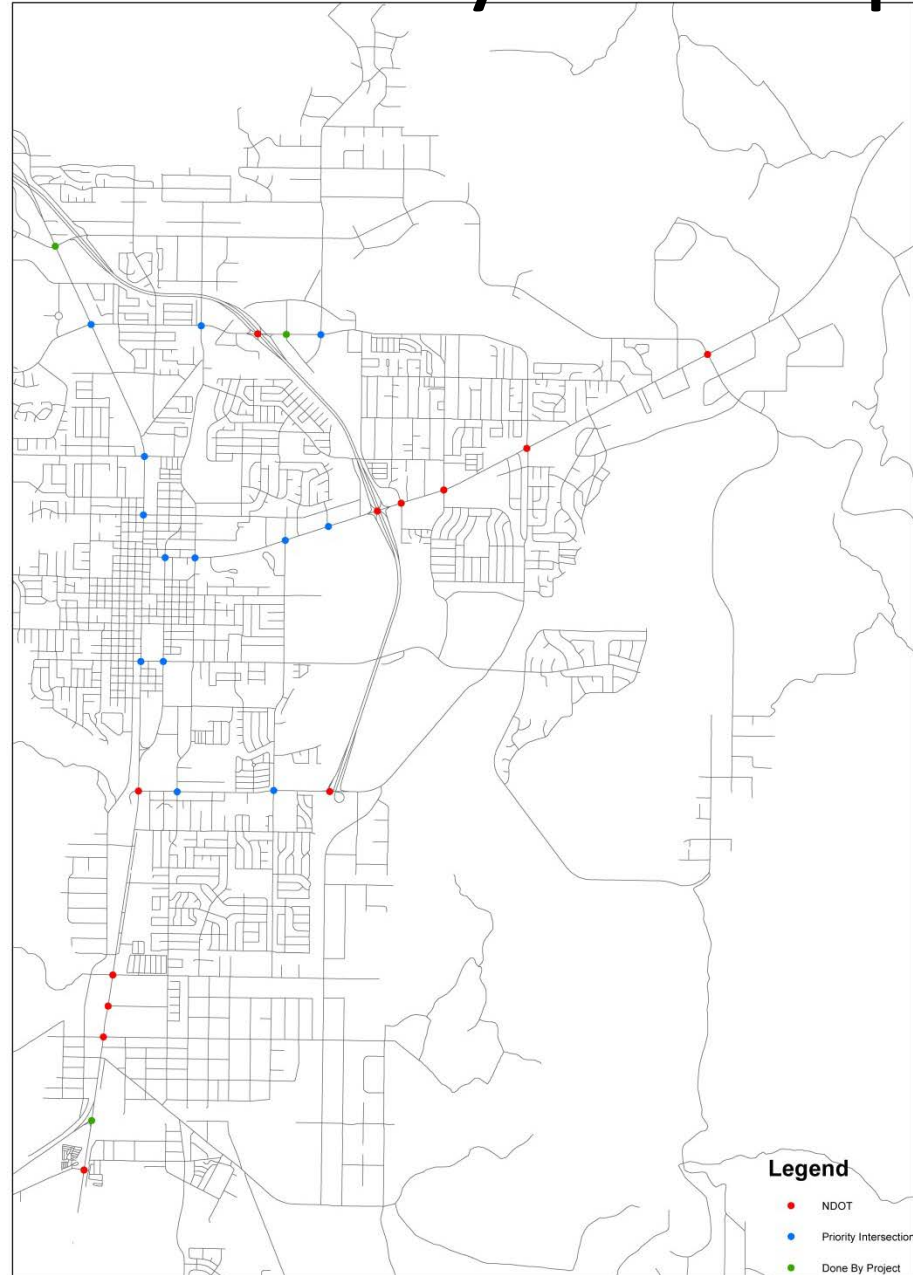
College/Research Signal



**“Brains” of the signal –
human and technological**

Traffic Signals – Battery Back-Ups

- 2 signals have battery back-up today
- 395/ 50 W will have it upon completion
- City completing 13 using Streets funds
- 12 additional locations with assistance of NDOT



Projects to be Completed this Fiscal Year

- Sonoma Street – Saliman to Halleck
- ADA improvements along Blue Line
(prior to improvement of line itself)
- Safety improvements – New roundabout

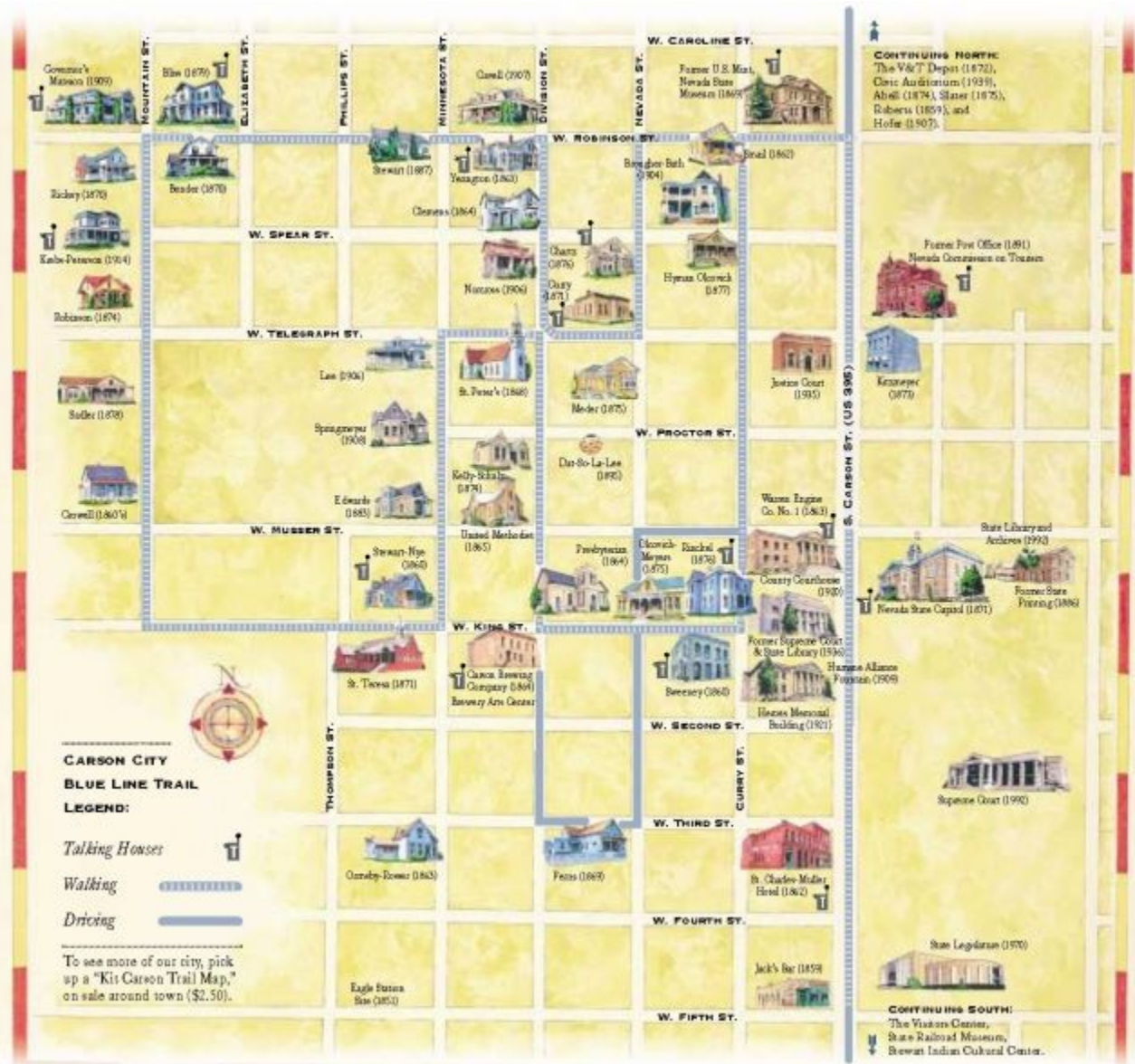
Sonoma Street Reconstruction – RTC Funds



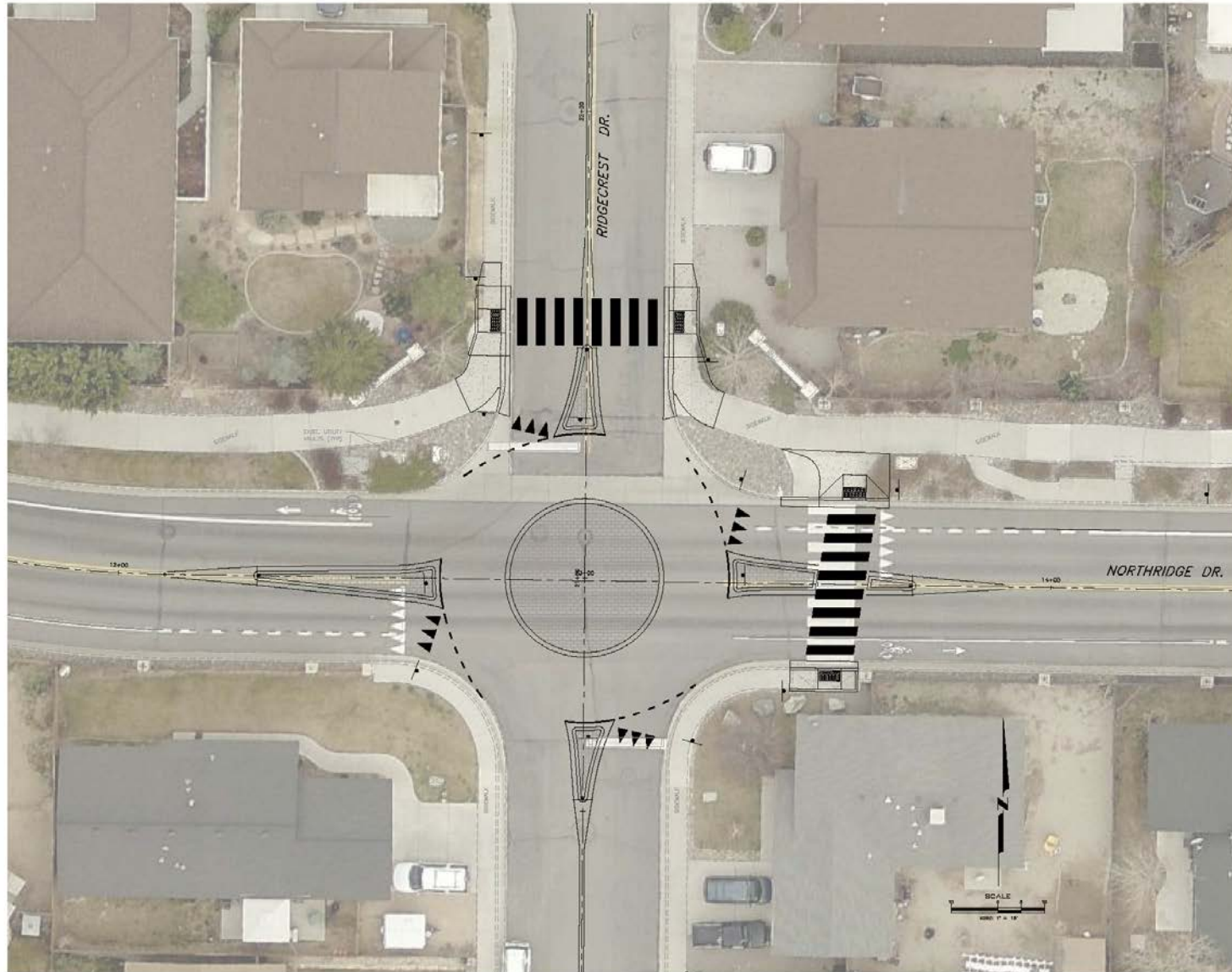
Reconstruct portion of Sonoma Street

Source: Esri, DigitalGlobe, GeoEye, Earthstar Geographics, CNES/Airbus DS, USDA, USGS, AeroX, Getmapping, Aergrid, IGN, IAP, swisstopo, and the GIS User Community

Blue Line – ADA Improvements



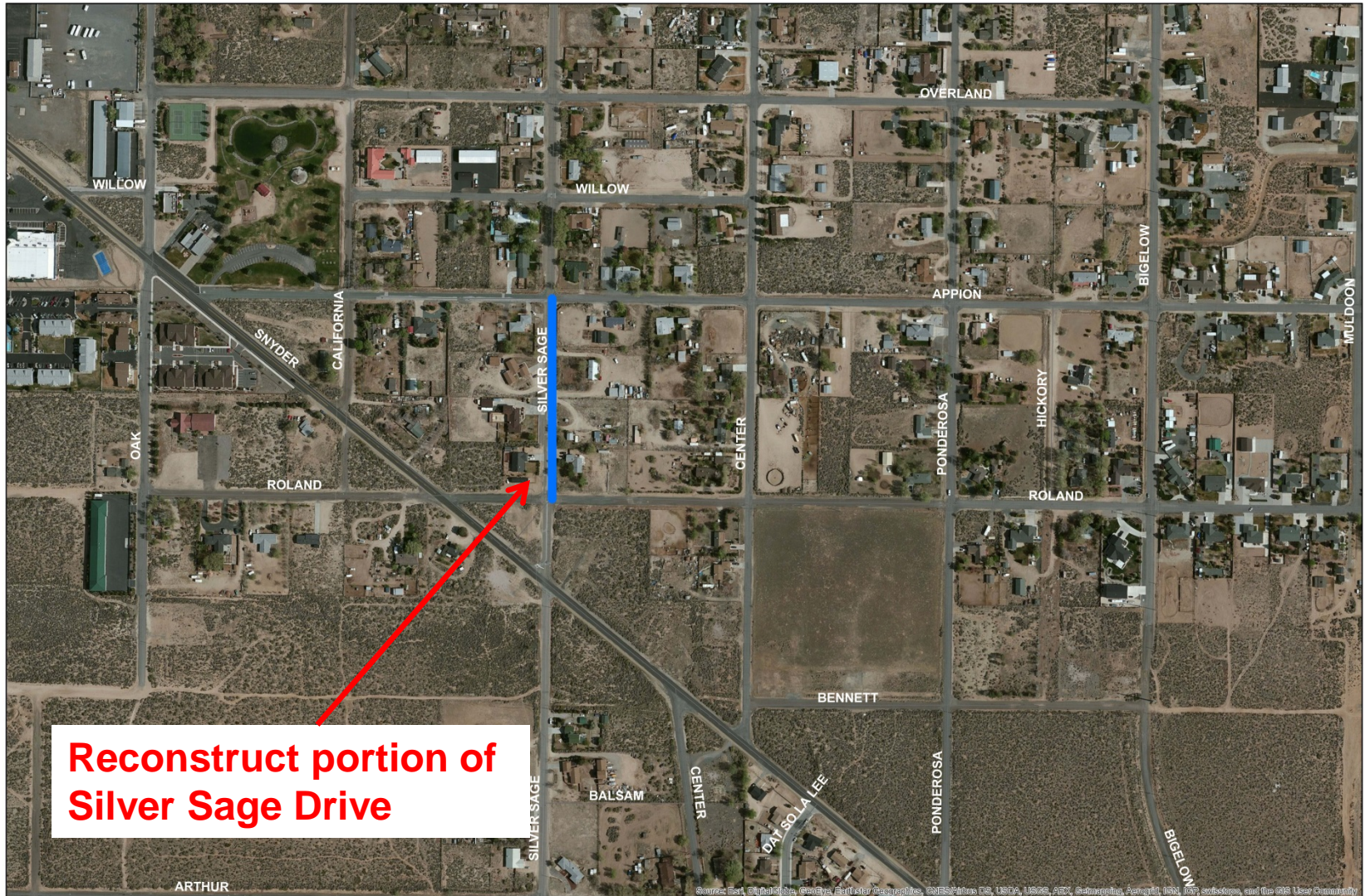
New Roundabout – Northridge/Ridgecrest



Surface Transportation Block Group (STBG) funds - Update

- NDOT and CAMPO entered agreement for funding
- CAMPO funding expected to be about \$1 million/year for four years divided among three counties
- Carson City's share is 70.6% based on population
- Carson City receives all funding for years one and four and reduced amounts in years two and three
- Road uses – collectors and arterials only
- Year one projects:
 - Silver Sage Drive
 - Airport Road – tied to freeway multiuse path project

STBG funding – Silver Sage Drive



STBG funding – Airport Road



**Mill and Overlay and
tie-into Freeway
Multiuse Path Project**

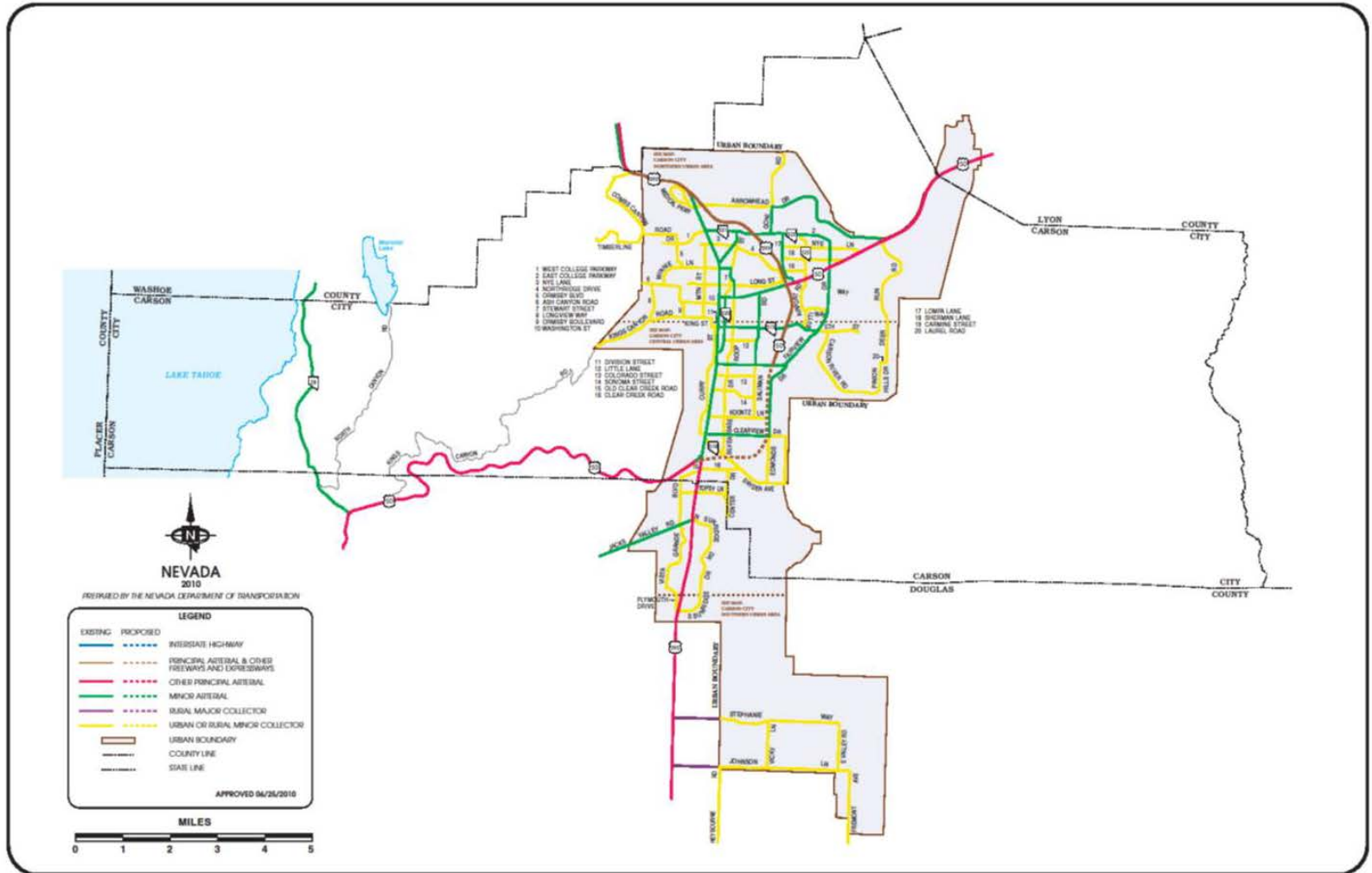
Pavement Preservation Options for Fiscal year 2017/2018

- Per previous TRAFCC discussions, need to direct funding to biggest roads which carry the most traffic
- Approximately \$1.6 million in RTC capital funds available for capital needs (in addition to STBG)
- Identify projects using pavement management system
 - System selects areas and treatment types based on conditions – not just PCI, but specific distresses
 - Surface treatments selected by system only within a specific range to optimize pavement condition systemwide
 - Band-aid projects can be pursued outside system as needed
 - System a tool being used in challenging fiscal context

Pavement Preservation Options for Fiscal year 2017/2018

- Surface treatments versus major reconstruction projects
- Different types of major reconstruction
 - True reconstruction (like the downtown project in 2016)
 - Mill and overlay
- Different types of surface treatments available
 - Slurry seal
 - Microsurfacing
 - More significant options – i.e. cape seal
- Difference in surface treatments
 - Cost per square foot
 - Maintenance (crack fill and pothole repair) usually required before surface treatment
 - Time to implement
 - ADA requirements – can be significant!

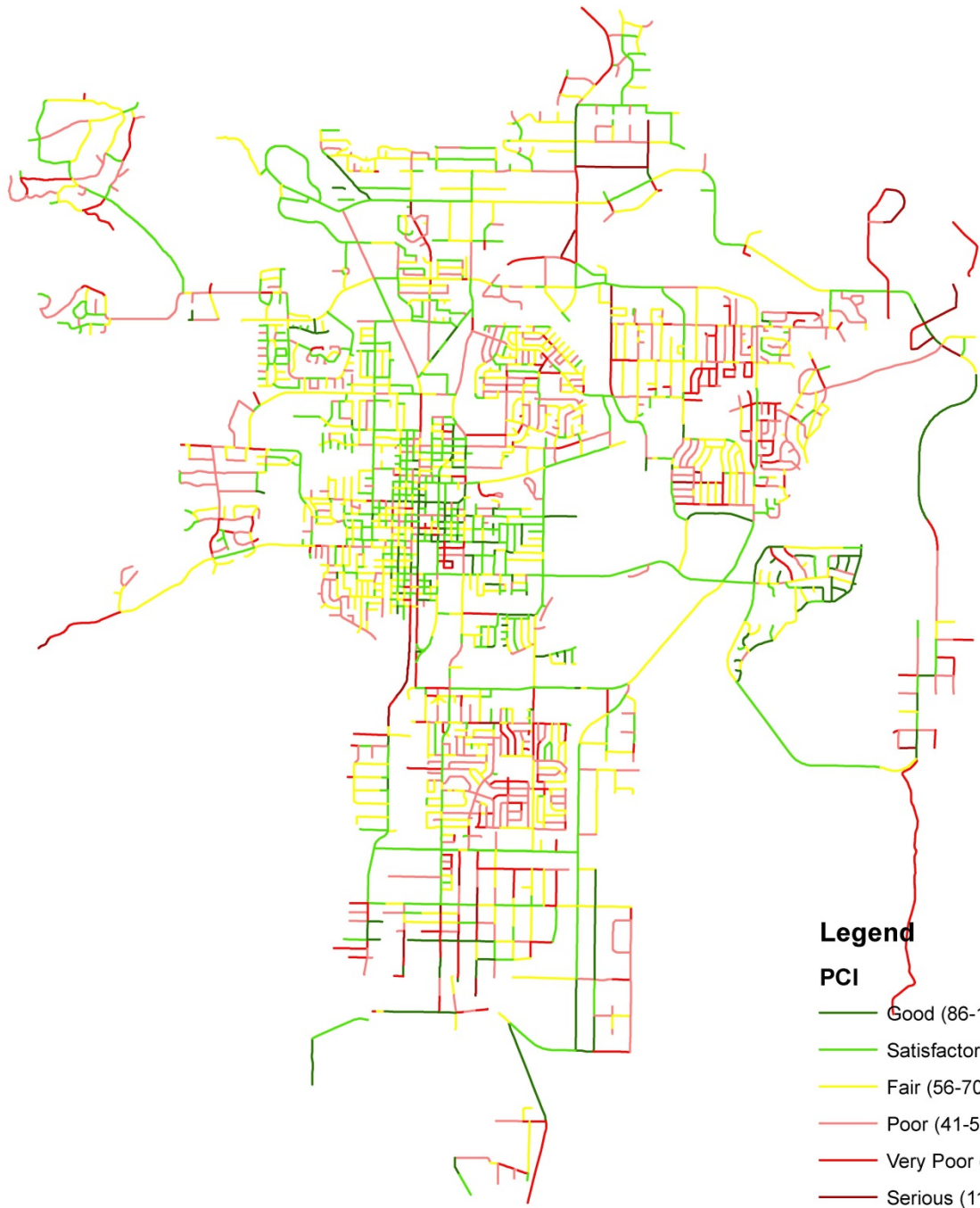
Street System of Carson City



ROADWAY FUNCTIONAL CLASSIFICATION

CARSON CITY
CARSON CITY, NEVADA

Carson City Streets - Current Conditions (January 2017)

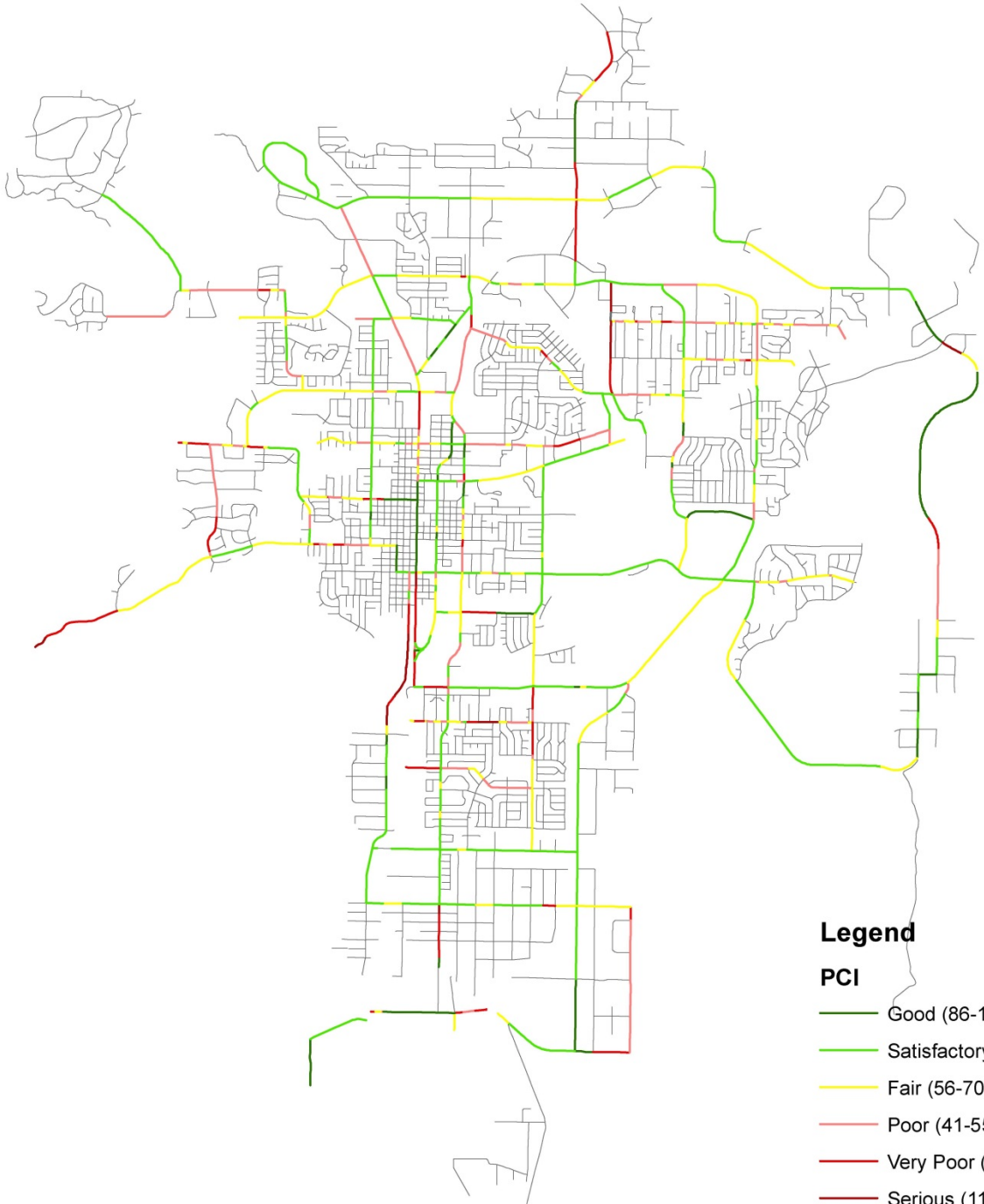


Legend

PCI

- Good (86-100)
- Satisfactory (71-85)
- Fair (56-70)
- Poor (41-55)
- Very Poor (26-40)
- Serious (11-25)
- Failed (0-10)

Arterial/ Collector Streets – Current conditions (January 2017)



- Legend**
- PCI**
- Good (86-100)
 - Satisfactory (71-85)
 - Fair (56-70)
 - Poor (41-55)
 - Very Poor (26-40)
 - Serious (11-25)
 - Failed (0-10)

Proposed Pavement Preservation Projects – Fiscal Year 2017/2018

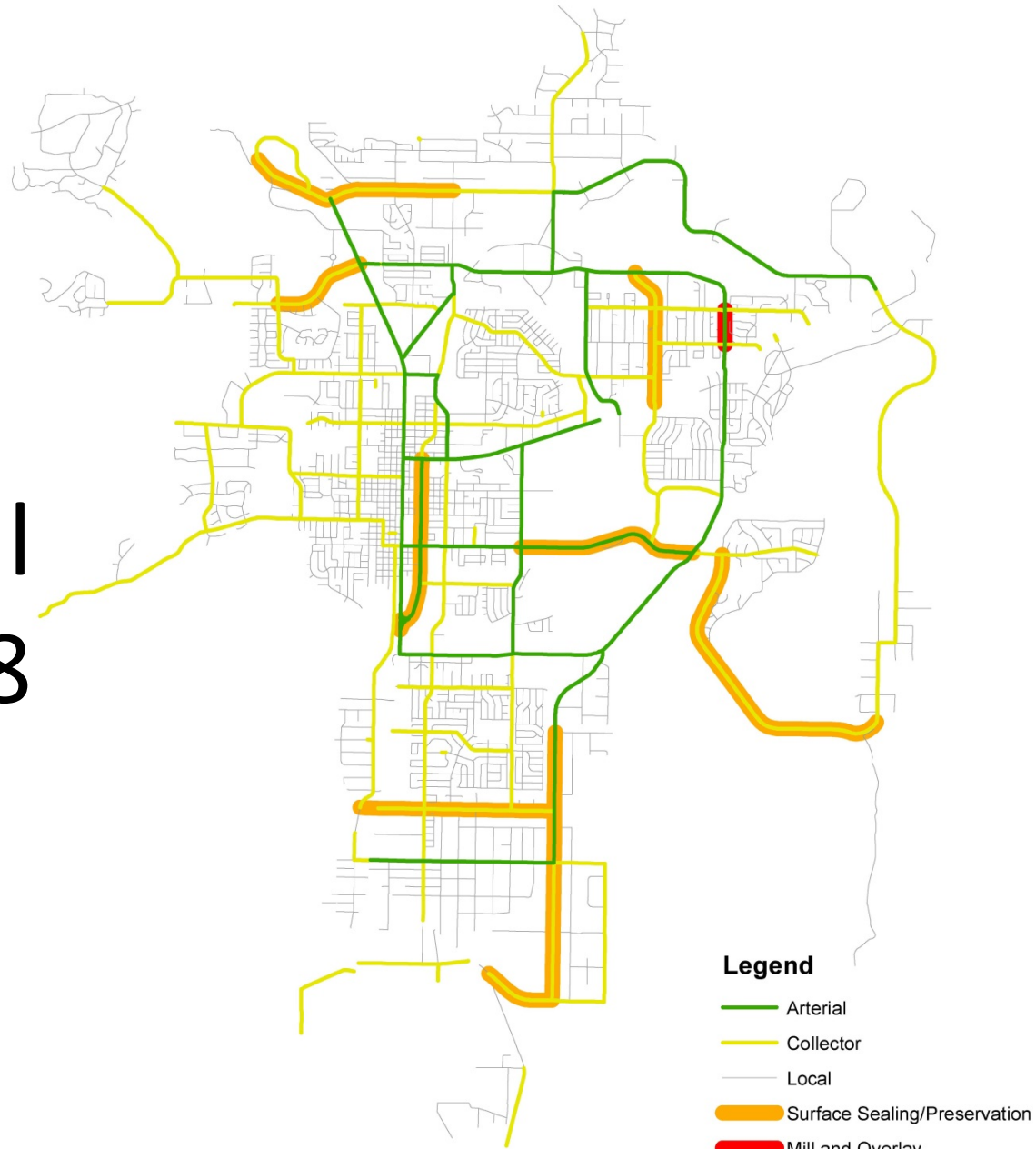
Surface Sealing/Preservation Projects

Project Name	Project Limits	Estimated Cost	Area (sqft)	Treatment	Length (Miles)	Pavement Condition	Estimated ADA Cost	Annual Average Daily Trips
Stewart Street	William St. to Carson St.	\$93,386	359,177	Slurry Seal	1.4	50-87	\$0	10,520
Edmonds Drive/Synder Avenue	Fairview Dr. to Synder Ave. and Edmonds Dr. to Bigelow Dr.	\$174,385	498,242	Micro Seal	3.2	54-87	\$0	7,571
Fifth Street	Saliman Rd. to Fairview Dr.	\$109,574	267,354	Micro Seal	1.5	75-82	\$16,000	6,124
W. College Parkway	N. Carson St. to N. Ormsby Blvd.	\$148,456	189,920	Cape Seal	0.7	60-64	\$44,000	5,732
Koontz Lane	Edmunds Dr. to Curry St.	\$105,391	255,403	Micro Seal	1.4	69-85	\$16,000	4,705
Arrowhead Drive/ Medical Parkway	Emmerson Dr. to Eagle Valley Ranch Rd.	\$164,055	258,281	Cape Seal	1.4	70-80	\$22,000	4,266
Airport Road	College Pkwy to U.S. 50	\$114,676	207,647	Micro Seal	1.0	63-82	\$42,000	4,185
Carson River Road	Fifth St. to Sierra Vista Dr.	\$113,175	323,356	Micro Seal	2.3	62-78	\$0	855
Totals		\$1,023,097					\$140,000	

Major Rehabilitation Project

Project Name	Project Limits	Estimated Cost	Area (sqft)	Treatment	Length (Miles)	Pavement Condition	Estimated ADA Cost	Annual Average Daily Trips
E. College Parkway	Nye Ln. to Sherman Ln.	\$273,254	73,501	Mill & Overlay	0.2	51	\$16,000	7,787

Proposed Pavement Preservation Projects – Fiscal Year 2017/2018



Updated Estimates to Maintain Carson City Roads

- Continue to refine system
 - Account for work by City staff better
 - Differentiate further – arterials vs. collectors
 - Evaluate different scenarios
 - Additional data collection – automated survey in fall 2017
- Available funds for capital projects \$2.3 Mil/year
 - Local- RTC and Streets
 - Federal – STBG

Updated Estimates to Maintain Carson City Roads

- Substantial shortfall in available funds
 - Estimated annual cost to maintain at overall PCI of 70 for next 10 years: About \$18 million
 - Estimated annual cost to maintain at overall current PCI (61) for next 10 years: About \$15 million
 - If all capital funds directed to arterial system only, PCI's in 10 years would be as follows:
 - Arterials: 63 (fair)
 - Collectors: 39 (very poor)
 - Locals: 37 (very poor)

TRAFCC Members' Interests for Discussion Topics

- What would you like to hear more about from staff?
- What would you like to provide more input on?

Next Steps

- Staff report to RTC on projects for Fiscal Year 2017/2018
- Continued project development
- Budgeting process
- Implementation of projects
- Next meeting April 18, 2017

Contact Information

Patrick Pittenger, M.S., AICP, PTP

Transportation Manager, Carson City Public Works

775-283-7396

ppittenger@carson.org

Thank you!