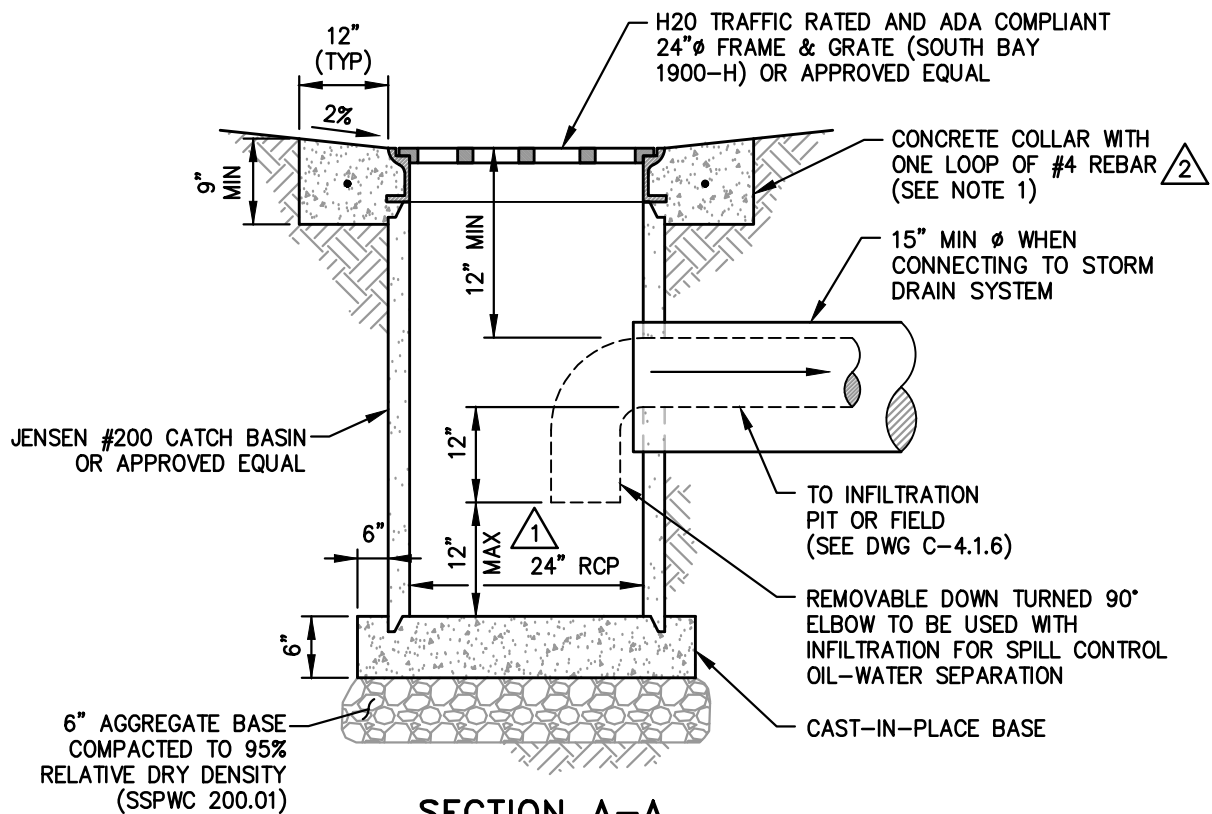


PLAN VIEW

NTS



SECTION A-A

NTS

NOTES:

- △2 1. PORTLAND CEMENT CONCRETE (PCC) SHALL HAVE THE FOLLOWING CHARACTERISTICS: 4000 PSI MINIMUM COMPRESSIVE STRENGTH AT 28 DAYS, MINIMUM 6 SACKS OF CEMENT PER CUBIC YARD WITH A MAXIMUM WATER/CEMENT RATIO OF 0.45, AIR ENTRAINMENT 6% \pm 1.5%, SLUMP AT 1 TO 4 INCHES. ALL MATERIALS SHALL CONFORM TO SSPWC 202 AND 337.10. REBAR FOR CONCRETE COLLAR SHALL ONLY BE USED WHEN THE CATCH BASIN IS LOCATED OUTSIDE PAVED AREAS.

NO.	REVISION	DATE	STANDARD DETAIL FOR PUBLIC WORKS CONSTRUCTION	SECTION
△1	SUMP DEPTH	9/17	CATCH BASIN TYPE 3	CARSON CITY
△2	CONC COLLAR	12/25		DRAWING NO. C-4.1.2
				DATE
				DEC 2025
APPROVED BY: <u>DA</u>			12/25	