

**PARKS AND RECREATION COMMISSION
STAFF REPORT**

MEETING DATE: February 6, 2018

AGENDA ITEM NUMBER: 3D

APPLICANT: Jennifer Budge, CPRP, Parks and Recreation Director

REQUEST: **For Possible Action:** Review, discussion, and possible recommendation to the Board of Supervisors to submit a Land and Water Conservation Fund grant application (approximately \$73,388 city cash match and \$8,400 city in-kind match) for paved path rehabilitation at Long Ranch Park.

GENERAL DISCUSSION:

The Nevada Division of State Parks is requesting grant applications for Land & Water Conservation Fund (LWCF). This program is funded with federal dollars and provides matching grants (50%) for the acquisition and development of public parks and other outdoor recreation sites. There is \$600,000 available in the next grant cycle. Applications are due no later than March 23, 2018.

The Long Ranch Estates development was built approximately twenty years ago and the path system is wearing out with age (Exhibit A). Maintenance is urgently needed for infrastructure preservation to provide a safe recreational amenity for the public to use and enjoy at this popular park. Long Ranch Estates residents have expressed their concerns to the City about the condition of the path system as well. With this in mind, the City retained Lumos and Associates to complete an evaluation of the paths to determine pavement condition, safety concerns, prioritize repairs in a phased approach, (Exhibit B) and provide an engineer's estimate (Exhibit C). The engineer's estimate for total rehabilitation is \$513,905.40. In anticipation of these needs, funds were identified in the FY 17-18 parks Capital Improvement Plan (CIP) budget to begin to address the aging infrastructure throughout the City's park system and to serve as match for grant opportunities.

If approved, the grant application would be requesting approximately \$81,788.00 for rehabilitation of a portion of the path system, with a total project estimated cost of \$163,576. The scope of work would include material testing, project management/bid preparation and a variety of crack sealing, wide crack repairs, full depth patching, slurry seal, and pedestrian access ramp replacements depending on the exact project location selected. If successful, rehabilitation would take place on the northern section of the park or a combination of the southern and western sections. The exact locations determined will be dependent on the timing of Carson City's 24" water transmission main construction project which is slated for the 2020-2021 timeframe and might conflict with the northern most section of the rehabilitation project.

The local match is \$81,778 and would be from a combination of the funds previously spent on the pavement evaluation plan (\$8,400) and there is \$73,388 in CIP funds available in the park's budget specifically for asphalt and concrete path rehabilitation projects.

It is department priority to find funding for the rehabilitation of the Long Ranch Park's path system and is using various grant opportunities towards that goal. As the commission knows, the City applied for a \$200,000 Recreation Trails Program (RTP) grant in October, 2017. Unfortunately, the City was not successful in getting the grant. In January, 2018, our department applied for a \$198,070 Community Development Block Grant to replace pedestrian access ramps throughout the park's path system.

This park's path system is identified in the Unified Pathways Master Plan for Carson City and not only provides opportunities for Long Ranch residents, but includes regional trail connectivity once the Vintage development is constructed.

RECOMMENDED ACTION: I move to recommend to the Board of Supervisors to submit a Land and Water Conservation Fund grant application (approximately \$73,388 city cash match and \$8,400 city in-kind match) for paved path rehabilitation at Long Ranch Park.

SITE PHOTOGRAPHS - Existing Access Ramp's Conditions



Access ramps are deteriorating and do not meet recommended ADA standards.



Access ramp's asphalt path transition areas are crumbling and cross slope/path grades. May not meet recommended standards.



SITE PHOTOGRAPHS - Existing Path System's Condition



Gaps are forming at previous patched areas and drainage is impacting wear and maintenance.



The path is deteriorating and crumbling in many locations, especially at curves, high use sections and transition points.



Edge of pavement is crumbling, severe bilateral cracks are forming, creating potential tripping hazards.

2 working days
Call before you Dig.
 1-800-227-2600
 AVOID CUTTING UNDERGROUND UTILITIES

CARSON CITY PARKS & OPEN SPACE LONG RANCH ESTATES PAVEMENT EVALUATION PROJECT



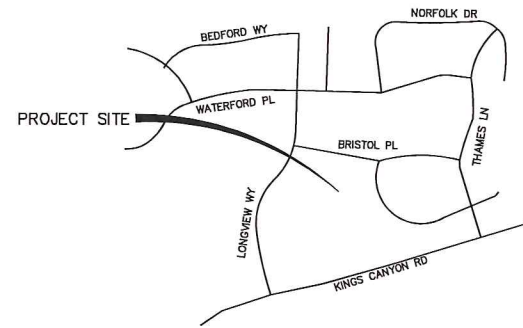
800 E. COLLEGE PARKWAY
 CARSON CITY, NEVADA 89706
 TEL (775) 883-7077
 FAX (775) 883-7114

WWW.LUMOSINC.COM

CIVIL ENGINEERING
 GEOTECHNICAL ENGINEERING
 PLANNING
 LANDSCAPE ARCHITECTURE
 SURVEYING / GIS
 CONSTRUCTION SERVICES
 MATERIALS TESTING



LOCATION MAP



VICINITY MAP

OWNER:

CARSON CITY PARKS & OPEN SPACE
 ATTN: VERN KRAHN
 3505 BUTTI WAY, BUILDING #9
 CITY, STATE ZIP
 PH.: (775) 887-2262
 FAX: (775) 887-2145

ENGINEER



800 E. COLLEGE PARKWAY
 CARSON CITY, NEVADA 89706
 PH.: (775) 883-7077
 FAX: (775) 883-7114

CARSON CITY PARKS & OPEN SPACE
 LONG RANCH ESTATES
 PAVEMENT EVALUATION PROJECT
 CARSON CITY NEVADA

REV	DATE	DESCRIPTION

90% SUBMITTAL

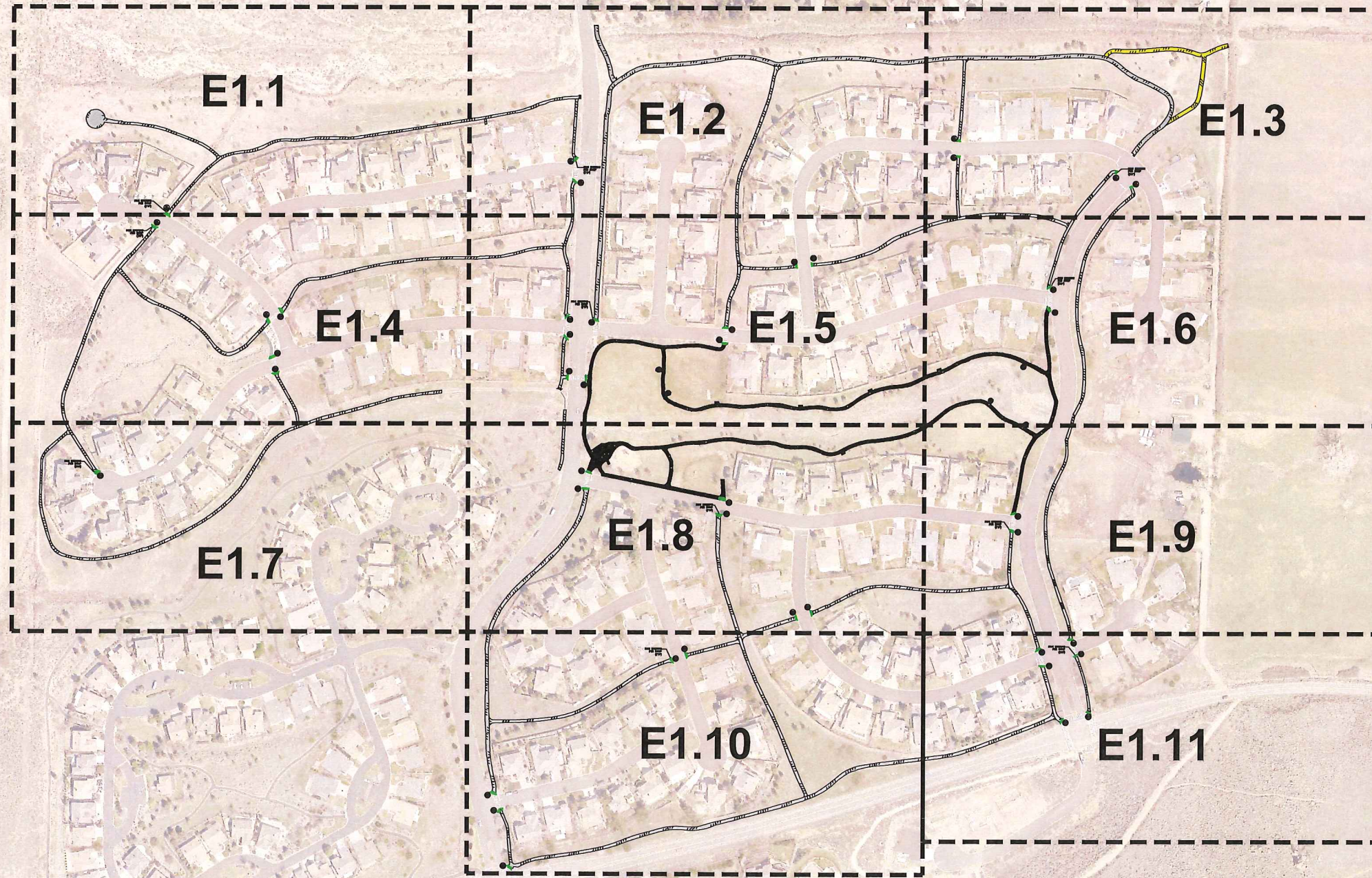
C1

DATE: SEPTEMBER 2017
 DRAWN BY: BDH
 DESIGNED BY: BDH
 CHECKED BY: MB
 JOB NO.: 9244.000

SHEET INDEX:

TITLE SHEET _____ C1.0
 SHEET INDEX _____ E1.0
 PAVEMENT EVALUATION _____ E1.1 to E1.11

Exhibit B



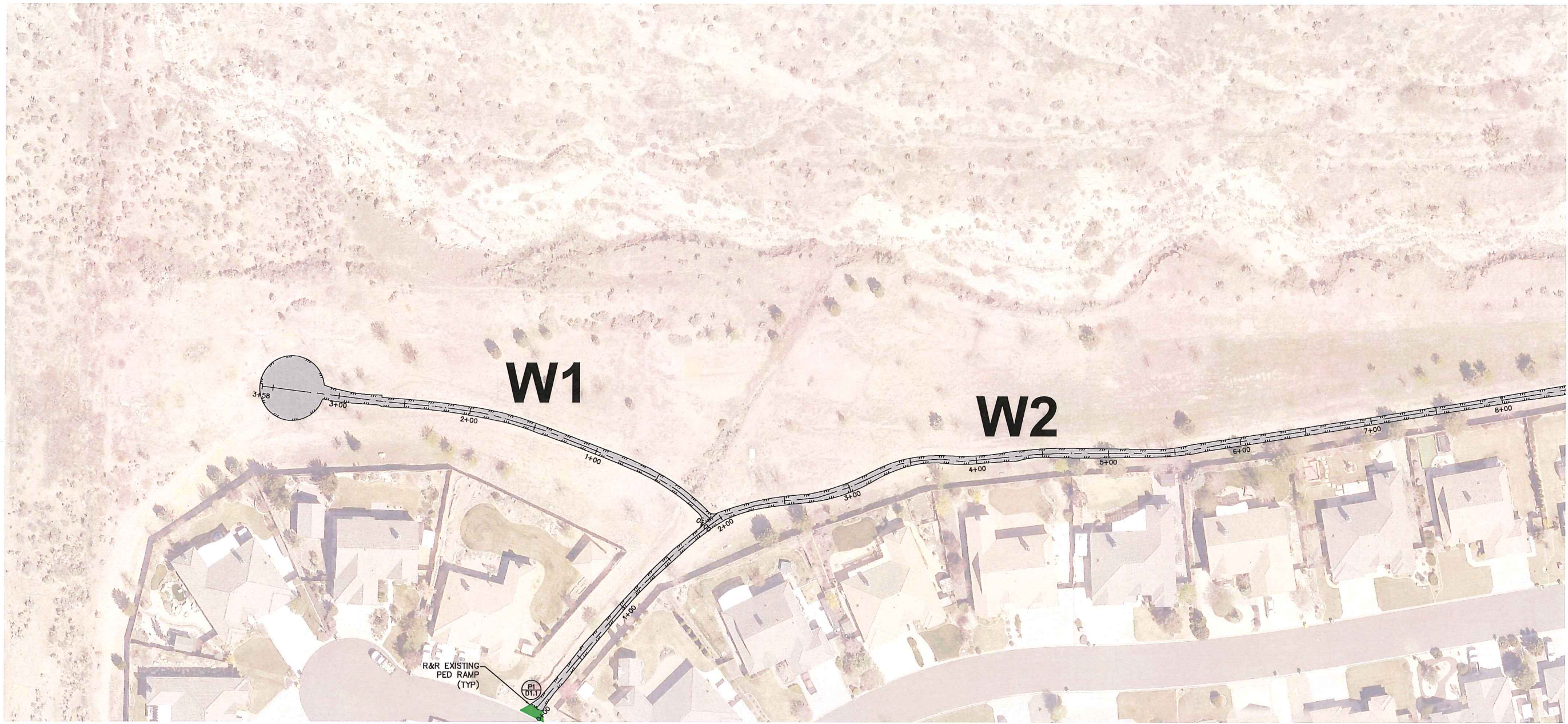
CARSON CITY PARKS & OPEN SPACE
LONG RANCH ESTATES
PEDESTRIAN RAMP REPLACEMENT PROJECT
CARSON CITY NEVADA

REV	DATE	DESCRIPTION	BY

90% SUBMITTAL

E1.0

DATE: JANUARY 2018
DRAWN BY: KJP
DESIGNED BY: BDH
CHECKED BY: MB
JOB NO.: 9244.000



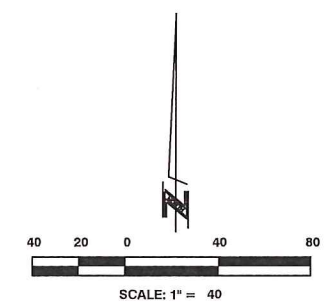
R&R EXISTING
PED RAMP
(TYP)

MATCH LINE - SEE SHEET E1.4 FOR CONTINUATION

MATCH LINE - SEE SHEET E1.2 FOR CONTINUATION

LEGEND

Symbol	ITEM
	FULL DEPTH PATCHING
	SAWCUT & RESHOULDERING
	SHOULDERING
	PEDESTRIAN RAMP REPLACEMENT
	R/R ASPHALT PATHWAY
	NEW ASPHALT PATHWAY



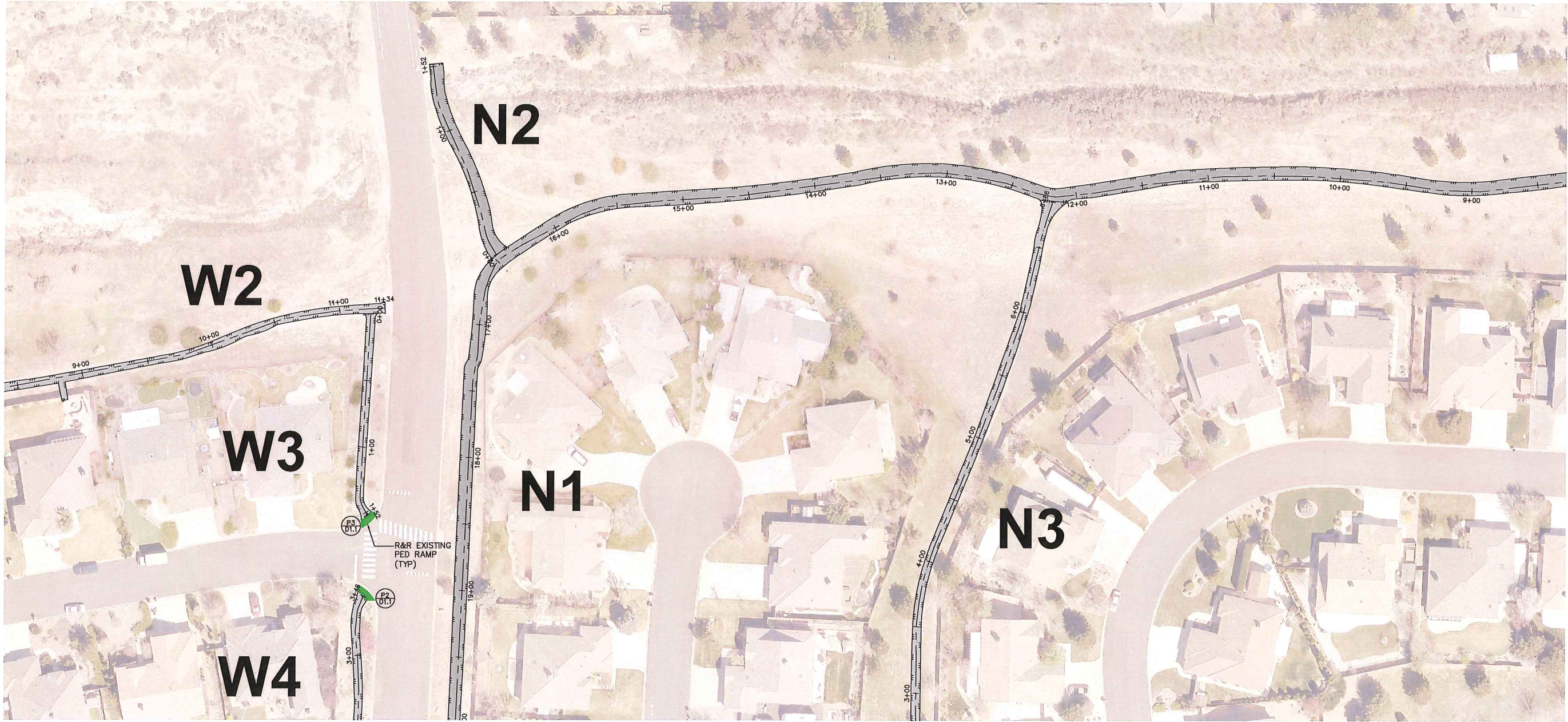
CARSON CITY PARKS & OPEN SPACE
LONG RANCH ESTATES
PEDESTRIAN RAMP REPLACEMENT PROJECT
CARSON CITY NEVADA

REV	DATE	DESCRIPTION	BY

90% SUBMITTAL

E1.1

DATE: JANUARY 2018
DRAWN BY: KJP
DESIGNED BY: BDH
CHECKED BY: MB
JOB NO.: 9244.000



MATCH LINE - SEE SHEET E1.3 FOR CONTINUATION

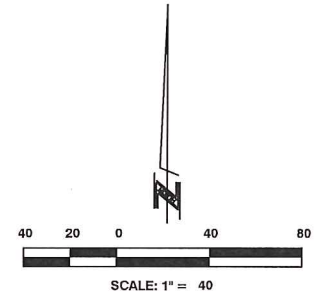
MATCH LINE - SEE SHEET E1.1 FOR CONTINUATION

MATCH LINE - SEE SHEET E1.5 FOR CONTINUATION

CARSON CITY PARKS & OPEN SPACE
**LONG RANCH ESTATES
PEDESTRIAN RAMP REPLACEMENT PROJECT**
CARSON CITY NEVADA

LEGEND

Symbol	ITEM
	FULL DEPTH PATCHING
	SAWCUT & RESHOULDERING
	SHOULDERING
	PEDESTRIAN RAMP REPLACEMENT
	R/R ASPHALT PATHWAY
	NEW ASPHALT PATHWAY

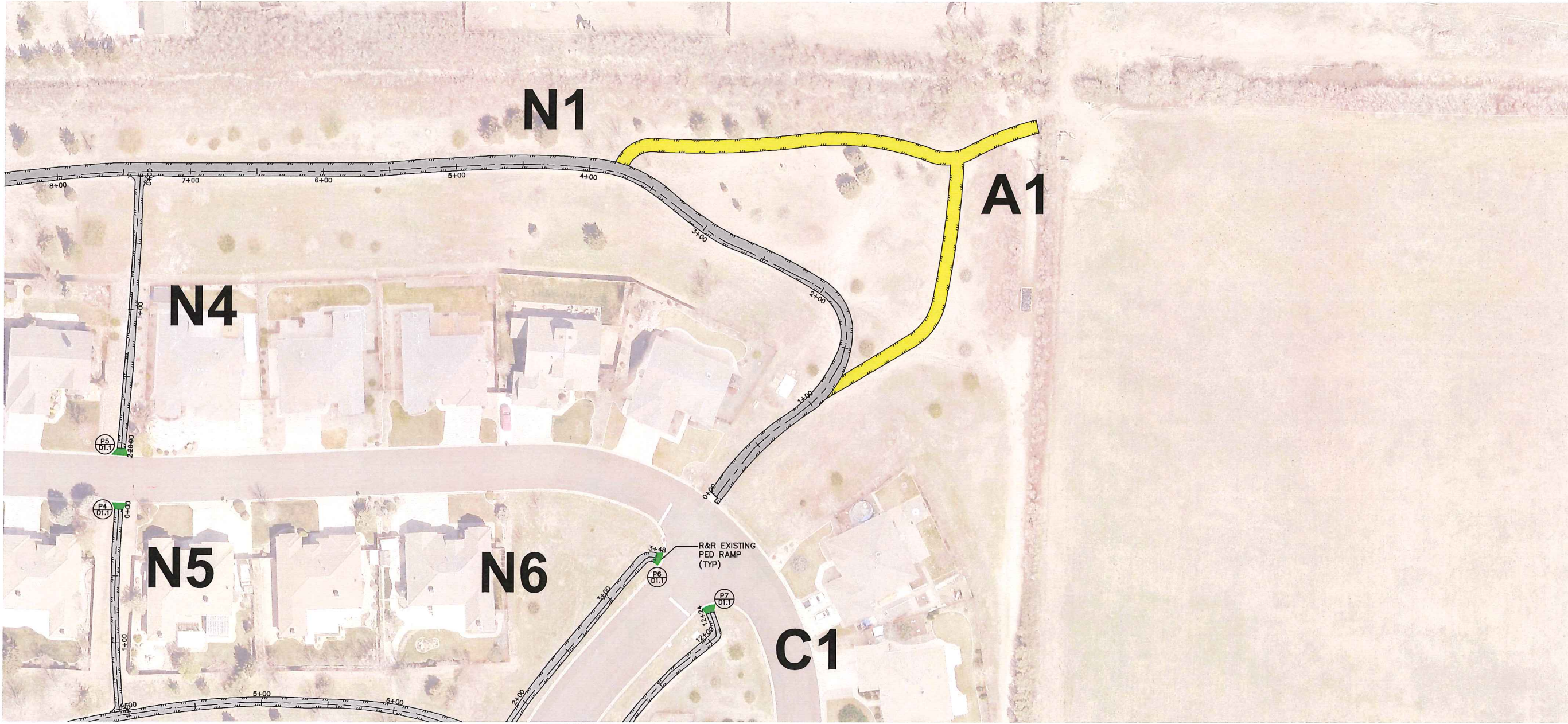


REV	DATE	DESCRIPTION	BY

90% SUBMITTAL

E1.2

DATE: JANUARY 2018
DRAWN BY: KJP
DESIGNED BY: BDH
CHECKED BY: MB
JOB NO.: 9244.000

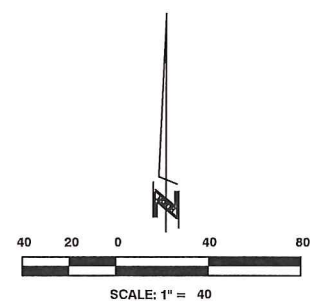


MATCH LINE - SEE SHEET E1.2 FOR CONTINUATION

MATCH LINE - SEE SHEET E1.6 FOR CONTINUATION

LEGEND

Symbol	ITEM
	FULL DEPTH PATCHING
	SAWCUT & RESHOULDERING
	SHOULDERING
	PEDESTRIAN RAMP REPLACEMENT
	R/R ASPHALT PATHWAY
	NEW ASPHALT PATHWAY



800 EAST COLLEGE PARKWAY
 CARSON CITY, NEVADA 89706
 TEL (775) 883-7077
 FAX (775) 883-7114

WWW.LUMOSINC.COM

CIVIL ENGINEERING
 GEOTECHNICAL ENGINEERING
 PLANNING
 LANDSCAPE ARCHITECTURE
 SURVEYING / GIS
 CONSTRUCTION SERVICES
 MATERIALS TESTING

CARSON CITY PARKS & OPEN SPACE
 LONG RANCH ESTATES
 PEDESTRIAN RAMP REPLACEMENT PROJECT
 CARSON CITY NEVADA

REV	DATE	DESCRIPTION	BY

90% SUBMITTAL

E1.3

DATE: JANUARY 2018
 DRAWN BY: KJP
 DESIGNED BY: BDH
 CHECKED BY: MB
 JOB NO.: 9244.000

MATCH LINE - SEE SHEET E1.1 FOR CONTINUATION



MATCH LINE - SEE SHEET E1.7 FOR CONTINUATION



800 EAST COLLEGE PARKWAY
CARSON CITY, NEVADA 89706
TEL (775) 883-7077
FAX (775) 883-7114

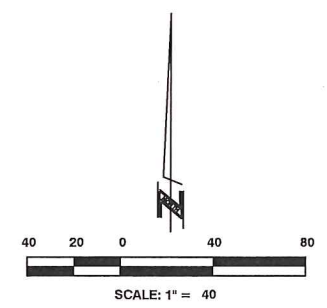
WWW.LUMOSINC.COM
CIVIL ENGINEERING
GEOTECHNICAL ENGINEERING
PLANNING
LANDSCAPE ARCHITECTURE
SURVEYING / GIS
CONSTRUCTION SERVICES
MATERIALS TESTING

MATCH LINE - SEE SHEET E1.5 FOR CONTINUATION

CARSON CITY PARKS & OPEN SPACE
LONG RANCH ESTATES
PEDESTRIAN RAMP REPLACEMENT PROJECT
NEVADA
CARSON CITY

LEGEND

Symbol	ITEM
	FULL DEPTH PATCHING
	SAWCUT & RESHOULDERING
	SHOULDERING
	PEDESTRIAN RAMP REPLACEMENT
	R/R ASPHALT PATHWAY
	NEW ASPHALT PATHWAY

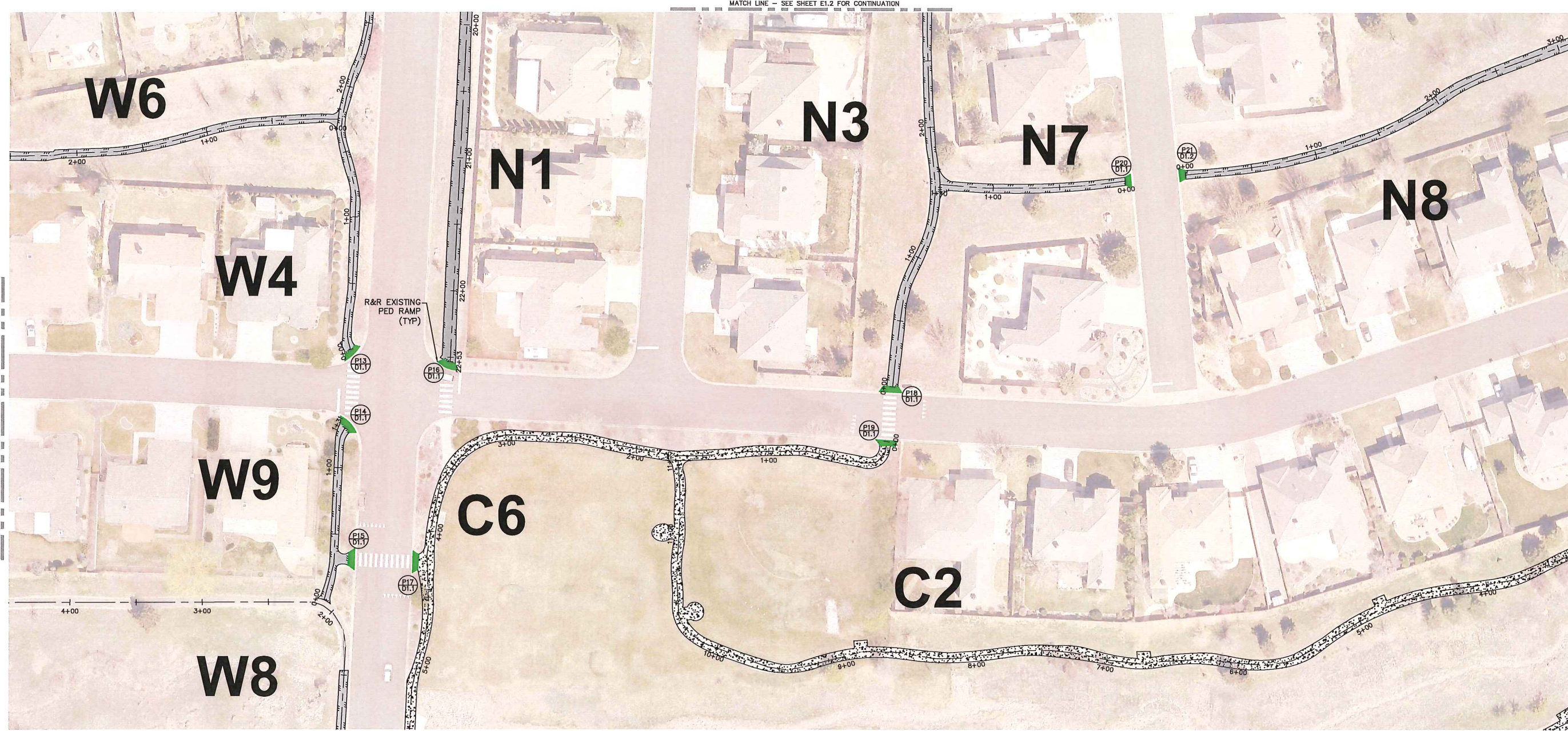


REV	DATE	DESCRIPTION

90% SUBMITTAL

E1.4

DATE: JANUARY 2018
DRAWN BY: KJP
DESIGNED BY: BDH
CHECKED BY: MB
JOB NO.: 9244.000



MATCH LINE - SEE SHEET E1.2 FOR CONTINUATION

MATCH LINE - SEE SHEET E1.4 FOR CONTINUATION

MATCH LINE - SEE SHEET E1.6 FOR CONTINUATION

MATCH LINE - SEE SHEET E1.8 FOR CONTINUATION



800 EAST COLLEGE PARKWAY
CARSON CITY, NEVADA 89706
TEL (775) 883-7077
FAX (775) 883-7114

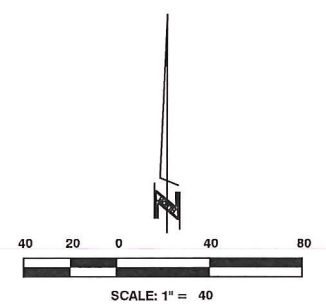
WWW.LUMOSINC.COM

CIVIL ENGINEERING
GEOTECHNICAL ENGINEERING
PLANNING
LANDSCAPE ARCHITECTURE
SURVEYING / GIS
CONSTRUCTION SERVICES
MATERIALS TESTING

CARSON CITY PARKS & OPEN SPACE
**LONG RANCH ESTATES
PEDESTRIAN RAMP REPLACEMENT PROJECT**
NEVADA
CARSON CITY

LEGEND

Symbol	ITEM
	FULL DEPTH PATCHING
	SAWCUT & RESHOULDERING
	SHOULDERING
	PEDESTRIAN RAMP REPLACEMENT
	R/R ASPHALT PATHWAY
	NEW ASPHALT PATHWAY



REV	DATE	DESCRIPTION

90% SUBMITTAL

E1.5

DATE: JANUARY 2018
DRAWN BY: KJP
DESIGNED BY: BDH
CHECKED BY: MB
JOB NO.: 9244.000



MATCH LINE - SEE SHEET E1.5 FOR CONTINUATION

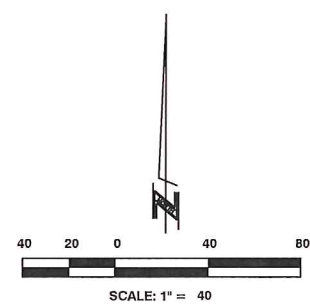
Symbol

-
-
-
-
-
-

LEGEND

ITEM

- FULL DEPTH PATCHING
- SAWCUT & RESHOULDERING
- SHOULDERING
- PEDESTRIAN RAMP REPLACEMENT
- R/R ASPHALT PATHWAY
- NEW ASPHALT PATHWAY



800 EAST COLLEGE PARKWAY
CARSON CITY, NEVADA 89706
TEL (775) 883-7077
FAX (775) 883-7114

WWW.LUMOSINC.COM

CIVIL ENGINEERING
GEOTECHNICAL ENGINEERING
PLANNING
LANDSCAPE ARCHITECTURE
SURVEYING / GIS
CONSTRUCTION SERVICES
MATERIALS TESTING

CARSON CITY PARKS & OPEN SPACE
LONG RANCH ESTATES
PEDESTRIAN RAMP REPLACEMENT PROJECT
CARSON CITY NEVADA

REV	DATE	DESCRIPTION

90% SUBMITTAL

E1.6

DATE: JANUARY 2018
DRAWN BY: KJP
DESIGNED BY: BDH
CHECKED BY: MB
JOB NO.: 9244.000



MATCH LINE - SEE SHEET E1.4 FOR CONTINUATION

MATCH LINE - SEE SHEET E1.8 FOR CONTINUATION



800 EAST COLLEGE PARKWAY
CARSON CITY, NEVADA 89706
TEL (775) 883-7077
FAX (775) 883-7114

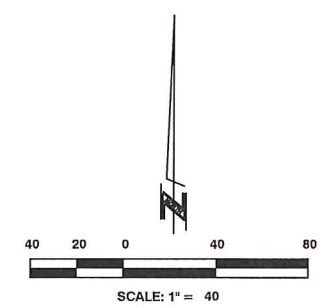
WWW.LUMOSINC.COM

CIVIL ENGINEERING
GEOTECHNICAL ENGINEERING
PLANNING
LANDSCAPE ARCHITECTURE
SURVEYING / GIS
CONSTRUCTION SERVICES
MATERIALS TESTING

CARSON CITY PARKS & OPEN SPACE
LONG RANCH ESTATES
PEDESTRIAN RAMP REPLACEMENT PROJECT
CARSON CITY NEVADA

LEGEND

Symbol	ITEM
	FULL DEPTH PATCHING
	SAWCUT & RESHOULDERING
	SHOULDERING
	PEDESTRIAN RAMP REPLACEMENT
	R/R ASPHALT PATHWAY
	NEW ASPHALT PATHWAY



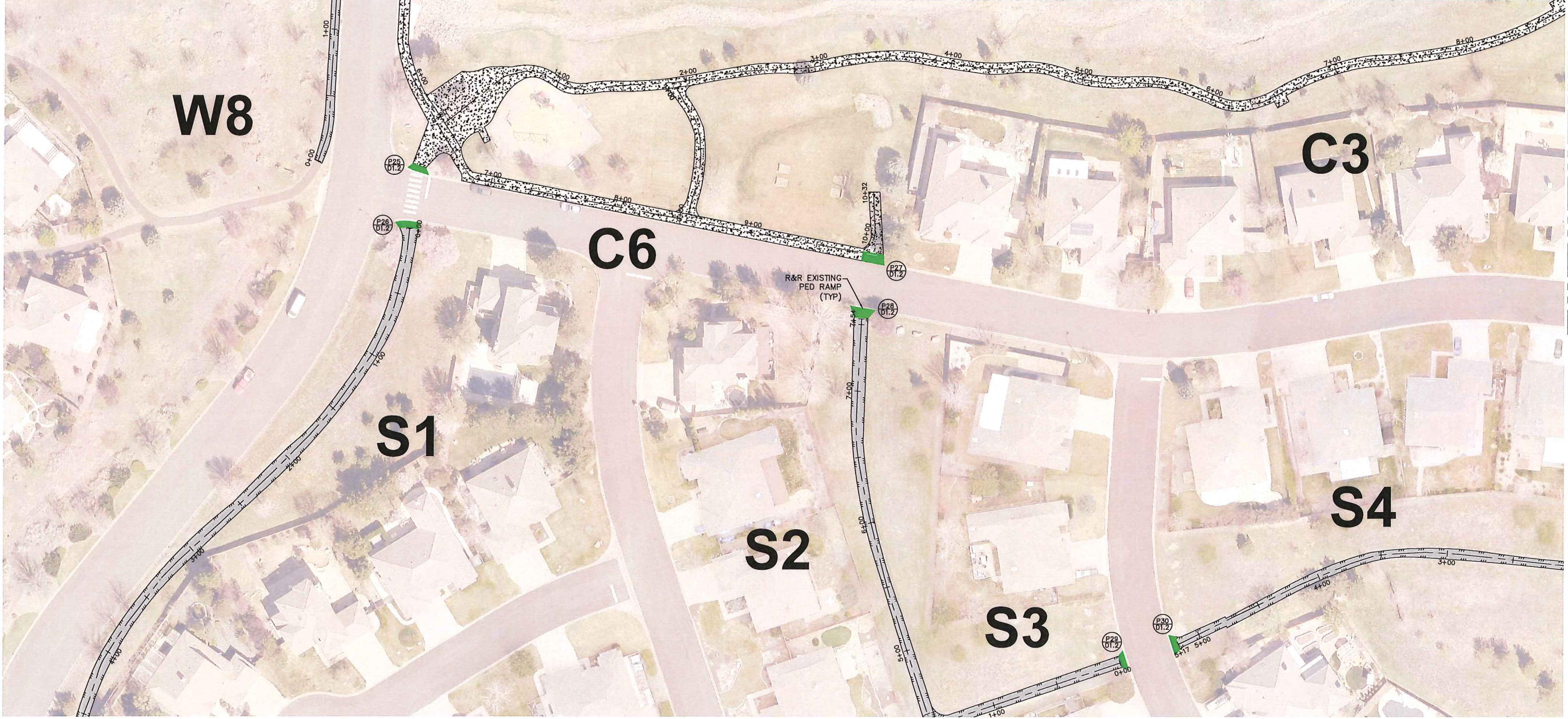
REV	DATE	DESCRIPTION

90% SUBMITTAL

E1.7

DATE: JANUARY 2018
DRAWN BY: KJP
DESIGNED BY: BDH
CHECKED BY: MB
JOB NO.: 9244.000

MATCH LINE - SEE SHEET E1.5 FOR CONTINUATION



MATCH LINE - SEE SHEET E1.11 FOR CONTINUATION



800 EAST COLLEGE PARKWAY
CARSON CITY, NEVADA 89706
TEL (775) 883-7077
FAX (775) 883-7114

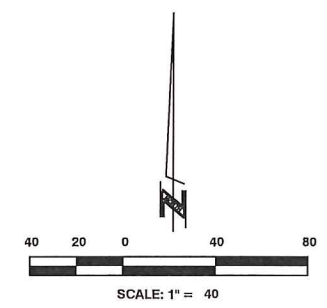
WWW.LUMOSINC.COM
CIVIL ENGINEERING
GEOTECHNICAL ENGINEERING
PLANNING
LANDSCAPE ARCHITECTURE
SURVEYING / GIS
CONSTRUCTION SERVICES
MATERIALS TESTING

MATCH LINE - SEE SHEET E1.9 FOR CONTINUATION

CARSON CITY PARKS & OPEN SPACE
LONG RANCH ESTATES
PEDESTRIAN RAMP REPLACEMENT PROJECT
NEVADA
CARSON CITY

LEGEND

Symbol	ITEM
	FULL DEPTH PATCHING
	SAWCUT & RESHOULDERING
	SHOULDERING
	PEDESTRIAN RAMP REPLACEMENT
	R/R ASPHALT PATHWAY
	NEW ASPHALT PATHWAY

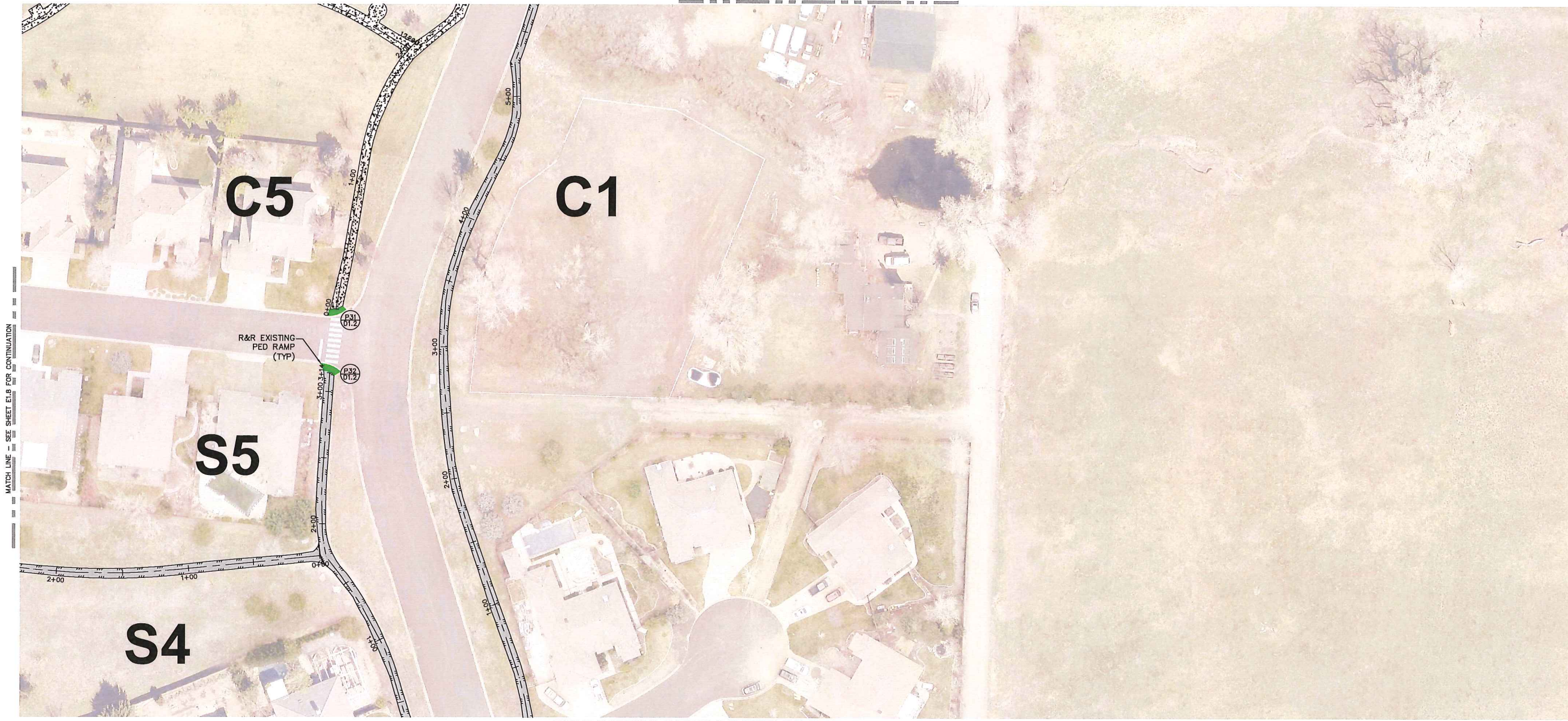


REV	DATE	DESCRIPTION

90% SUBMITTAL

E1.8

DATE: JANUARY 2018
DRAWN BY: KJP
DESIGNED BY: BDH
CHECKED BY: MB
JOB NO.: 9244.000

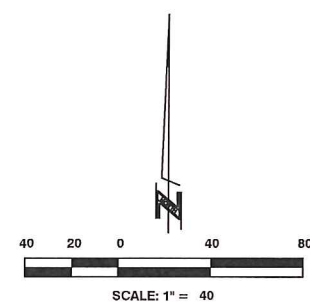


MATCH LINE - SEE SHEET E1.8 FOR CONTINUATION

MATCH LINE - SEE SHEET E1.11 FOR CONTINUATION

LEGEND

Symbol	ITEM
	FULL DEPTH PATCHING
	SAWCUT & RESHOULDERING
	SHOULDERING
	PEDESTRIAN RAMP REPLACEMENT
	R/R ASPHALT PATHWAY
	NEW ASPHALT PATHWAY



800 EAST COLLEGE PARKWAY
CARSON CITY, NEVADA 89706
TEL (775) 883-7077
FAX (775) 883-7114

WWW.LUMOSINC.COM

CIVIL ENGINEERING
GEOTECHNICAL ENGINEERING
PLANNING
LANDSCAPE ARCHITECTURE
SURVEYING / GIS
CONSTRUCTION SERVICES
MATERIALS TESTING

CARSON CITY PARKS & OPEN SPACE
LONG RANCH ESTATES
PEDESTRIAN RAMP REPLACEMENT PROJECT
NEVADA
CARSON CITY

REV	DATE	DESCRIPTION

90% SUBMITTAL

E1.9

DATE: JANUARY 2018
DRAWN BY: KJP
DESIGNED BY: BDH
CHECKED BY: MB
JOB NO.: 9244.000



MATCH LINE - SEE SHEET E1.8 FOR CONTINUATION

MATCH LINE - SEE SHEET E1.11 FOR CONTINUATION



800 EAST COLLEGE PARKWAY
CARSON CITY, NEVADA 89706
TEL (775) 883-7077
FAX (775) 883-7114

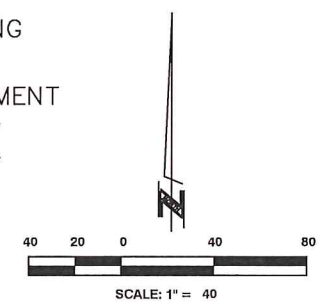
WWW.LUMOSINC.COM

CIVIL ENGINEERING
GEO TECHNICAL ENGINEERING
PLANNING
LANDSCAPE ARCHITECTURE
SURVEYING / GIS
CONSTRUCTION SERVICES
MATERIALS TESTING

CARSON CITY PARKS & OPEN SPACE
LONG RANCH ESTATES
PEDESTRIAN RAMP REPLACEMENT PROJECT
NEVADA
CARSON CITY

LEGEND

Symbol	ITEM
	FULL DEPTH PATCHING
	SAWCUT & RESHOULDERING
	SHOULDERING
	PEDESTRIAN RAMP REPLACEMENT
	R/R ASPHALT PATHWAY
	NEW ASPHALT PATHWAY



REV	DATE	DESCRIPTION

90% SUBMITTAL

E1.10

DATE: JANUARY 2018
DRAWN BY: KJP
DESIGNED BY: BDH
CHECKED BY: MB
JOB NO.: 9244.000



MATCH LINE - SEE SHEET E1.10 FOR CONTINUATION



800 EAST COLLEGE PARKWAY
CARSON CITY, NEVADA 89706
TEL (775) 883-7077
FAX (775) 883-7114

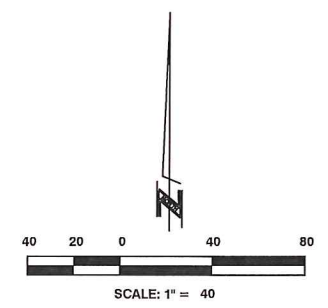
WWW.LUMOSINC.COM

CIVIL ENGINEERING
GEOTECHNICAL ENGINEERING
PLANNING
LANDSCAPE ARCHITECTURE
SURVEYING / GIS
CONSTRUCTION SERVICES
MATERIALS TESTING

CARSON CITY PARKS & OPEN SPACE
LONG RANCH ESTATES
PEDESTRIAN RAMP REPLACEMENT PROJECT
NEVADA
CARSON CITY

LEGEND

Symbol	ITEM
	FULL DEPTH PATCHING
	SAWCUT & RESHOULDERING
	SHOULDERING
	PEDESTRIAN RAMP REPLACEMENT
	R/R ASPHALT PATHWAY
	NEW ASPHALT PATHWAY



REV	DATE	DESCRIPTION	BY

90% SUBMITTAL

E1.11

DATE: JANUARY 2018
DRAWN BY: KJP
DESIGNED BY: BDH
CHECKED BY: MB
JOB NO.: 9244.000



NE SIDE OF CHELSEA PL NEAR CUL-DE-SAC

P1
ET.1



SW SIDE OF BEDFORD WAY AND LONGVIEW WY

P2
ET.2



NE SIDE OF BEDFORD WAY AND LONGVIEW WY

P3
ET.2



S SIDE OF NORFOLK DR

P4
ET.3



N SIDE OF NORFOLK DR

P5
ET.3



SW CORNER OF THREE-WAY INTERSECTION ON NORFOLK DR AND THAMES LN

P6
ET.3



SE CORNER OF THREE-WAY INTERSECTION ON OXFORD CT AND THAMES LN

P7
ET.3



SW SIDE OF CHELSEA PL NEAR CUL-DE-SAC

P8
ET.4



SW SIDE OF CHELSEA PL

P9
ET.4



NE SIDE OF CHELSEA PL

P10
ET.4



N SIDE OF WATERFORD PL, W OF INTERSECTION

P11
ET.4



S SIDE OF WATERFORD PL, W OF INTERSECTION

P12
ET.4



NW CORNER OF WATERFORD PL AND LONGVIEW DR INTERSECTION

P13
ET.5



SW CORNER OF WATERFORD PL AND LONGVIEW DR INTERSECTION

P14
ET.5



W SIDE OF LONGVIEW DR, ADJACENT TO PARK

P15
ET.5



NE CORNER OF WATERFORD PL AND LONGVIEW DR INTERSECTION

P16
ET.5



E SIDE OF LONGVIEW DR, ADJACENT TO PARK

P17
ET.5



N SIDE OF WATERFORD PL

P18
ET.5



S SIDE OF WATERFORD PL

P19
ET.5



W SIDE OF NORFOLK DR

P20
ET.5

REV	DATE	DESCRIPTION	BY

90% SUBMITTAL

D1.1



E SIDE OF NORFOLK DR

P21
ET.5



N SIDE OF WATERFORD PL AT THAMES LN INTERSECTION

P22
ET.6



S SIDE OF WATERFORD PL AT THAMES LN INTERSECTION

P23
ET.6



PED RAMP IN WATERFORD PL CUL-DE-SAC

P24
ET.6



N CORNER OF BRISTOL PL AT LONGVIEW WY INTERSECTION

P25
ET.6



S CORNER OF BRISTOL PL AT LONGVIEW WY INTERSECTION

P26
ET.6



N SIDE OF BRISTOL PL NEAR SE SIDE OF PARK

P27
ET.6



S SIDE OF BRISTOL PL

P28
ET.6



SW SIDE OF ST GEORGE WY

P29
ET.6



NE SIDE OF ST GEORGE WY, S OF MAILBOX

P30
ET.6



N SIDE OF BRISTOL PL AT THAMES LN INTERSECTION

P31
ET.9



S SIDE OF BRISTOL PL AT THAMES LN INTERSECTION

P32
ET.9



N SIDE OF ROXBURY WY AT LONGVIEW WY INTERSECTION

P33
ET.10



S SIDE OF ROXBURY WY AT LONGVIEW WY INTERSECTION

P34
ET.10



N SIDE OF LONGVIEW WY TURN-OFF FROM KINGS CANYON RD

P35
ET.10



SW SIDE OF ST ALBANS PL

P36
ET.10



NW SIDE OF ST ALBANS PL

P37
ET.10



NW CORNER OF INTERSECTION AT ST GEORGE WY AND THAMES LN

P38
ET.11



NE CORNER OF INTERSECTION AT ST GEORGE WY AND THAMES LN

P39
ET.11



SW CORNER OF INTERSECTION AT ST GEORGE WY AND THAMES LN

P40
ET.11

REV	DATE	DESCRIPTION	BY

90% SUBMITTAL

D1.2



SE CORNER OF INTERSECTION AT ST GEORGE WAY AND THAMES LN



S SIDE OF THAMES LN TURN-OFF FROM KINGS CANYON RD



N SIDE OF THAMES LN TURN-OFF FROM KINGS CANYON RD



800 EAST COLLEGE PARKWAY
CARSON CITY, NEVADA 89706
TEL (775) 883-7077
FAX (775) 883-7114

WWW.LUMOSINC.COM

CIVIL ENGINEERING
GEOTECHNICAL ENGINEERING
PLANNING
LANDSCAPE ARCHITECTURE
SURVEYING / GIS
CONSTRUCTION SERVICES
MATERIALS TESTING

CARSON CITY PARKS & OPEN SPACE
LONG RANCH ESTATES
PEDESTRIAN RAMP REPLACEMENT PROJECT
CARSON CITY NEVADA

REV	DATE	DESCRIPTION	BY

90% SUBMITTAL

D1.3

DATE: JANUARY 2018
DRAWN BY: KJP
DESIGNED BY: KJP
CHECKED BY: BDH
JOB NO.: 9244.000



**CARSON CITY PARKS, RECREATION AND OPEN SPACE
LONG RANCH ESTATES PAVEMENT EVALUATION PROJECT
90% ENGINEER'S ESTIMATE**



PATHWAY SEGMENT	PAVEMENT CRACK SEALING	ASPHALT PAVEMENT PATCHING	WIDE CRACK REPAIR	TYPE 1 SLURRY SEAL	REMOVE EXISTING & CONSTRUCT 10' ASPHALT PATHWAY	SHOULDERING	CONSTRUCT NEW 10' ASPHALT PATHWAY	CONCRETE PATCHING	SAWCUT PAVEMENT EDGE & RE-SHOULDER	REMOVE EXISTING & CONSTRUCT NEW PEDESTRIAN RAMP	PATHWAY SEGMENT COST	AREA COST
	\$ 1.50 /LF	\$ 8.00 /SF	\$ 8.00 /LF	\$ 0.60 /SF	\$ 6.50 /SF	\$ 16.00 /LF	\$ 6.50 /SF	\$ 20.00 /SF	\$ 20.00 /LF	\$ 3,200.00 /EA		
A1	-	-	-	-	-	-	5,280	-	-	-	-	\$ 34,320.00
ADDITIONAL AREA TOTALS:	-	-	-	-	-	-	5,280	-	-	-	-	\$ 34,320.00
C1	297	1,460	30	9,054	-	20	-	-	-	2	\$ 24,517.90	
C2	-	-	-	-	-	-	-	53	-	-	\$ 1,060.00	
C3	-	-	-	-	-	-	-	356	-	-	\$ 7,120.00	
C5	6	-	12	-	-	18	-	48	-	2	\$ 7,753.00	
C6	-	-	-	-	-	-	-	724	-	2	\$ 20,880.00	
CENTRAL AREA TOTALS:	303	1,460	42	9,054	-	38	-	1,181	-	6	\$ 61,330.90	
N1	-	-	-	-	22,530	-	-	-	-	3	\$ 156,045.00	
N2	-	-	-	-	1,520	-	-	-	-	-	\$ 9,880.00	
N3	94	84	39	4,885	-	-	-	-	-	1	\$ 7,256.00	
N4	23	24	12	1,288	-	-	-	-	-	1	\$ 4,295.30	
N5	6	24	6	916	-	-	-	-	-	1	\$ 3,998.60	
N6	-	366	15	2,358	-	173	-	-	-	2	\$ 13,630.80	
N7	24	36	6	968	-	-	-	-	-	1	\$ 4,152.80	
N8	70	90	54	4,946	-	-	-	-	-	2	\$ 10,624.60	
NORTHERN AREA TOTALS:	217	624	132	15,361	24,050	173	-	-	-	11	\$ 209,883.10	
S1	124	488	60	7,829	-	-	-	-	-	2	\$ 15,667.40	
S2	194	-	-	5,888	-	-	-	-	-	1	\$ 7,023.80	
S3	77	56	-	1,256	-	-	-	-	146	1	\$ 7,437.10	
S4	72	-	6	3,681	-	-	-	-	-	1	\$ 5,564.60	
S5	24	318	-	2,213	-	-	-	-	196	2	\$ 14,227.80	
S6	112	80	-	3,610	-	46	-	-	-	1	\$ 6,910.00	
S7	36	60	-	1,026	-	66	-	-	-	1	\$ 5,405.60	
S8	657	841	94	12,883	-	34	-	-	67	2	\$ 24,479.30	
S9	6	291	-	1,245	-	-	-	-	148	2	\$ 12,444.00	
S10	12	358	-	768	-	50	-	-	-	2	\$ 10,542.80	
SOUTHERN AREA TOTALS:	1,314	2,492	160	40,399	-	196	-	-	557	15	\$ 109,702.40	
W1	62	26	24	3,922	-	-	-	-	-	-	\$ 2,846.20	
W2	506	606	42	7,048	-	-	-	-	-	2	\$ 16,571.80	
W3	-	250	-	953	-	-	-	-	-	1	\$ 5,771.80	
W4	32	314	18	2,235	-	-	-	-	-	2	\$ 10,445.00	
W5	151	1,267	18	4,853	-	-	-	-	-	2	\$ 19,818.30	
W6	92	258	36	4,970	-	-	-	-	-	1	\$ 8,672.00	
W7	12	312	-	883	-	-	-	-	-	1	\$ 6,243.80	
W8	186	249	24	12,142	-	204	-	-	-	-	\$ 13,012.20	
W9	59	716	-	3,452	-	-	-	-	-	1	\$ 11,087.70	
W10	36	84	-	457	-	-	-	-	-	1	\$ 4,200.20	
WESTERN AREA TOTALS:	1,136	4,082	162	40,915	-	204	-	-	-	11	\$ 98,669.00	
GRAND TOTALS:	2,970	8,658	496	105,729	24,050	611	5,280	1,181	557	43	\$ 513,905.40	