
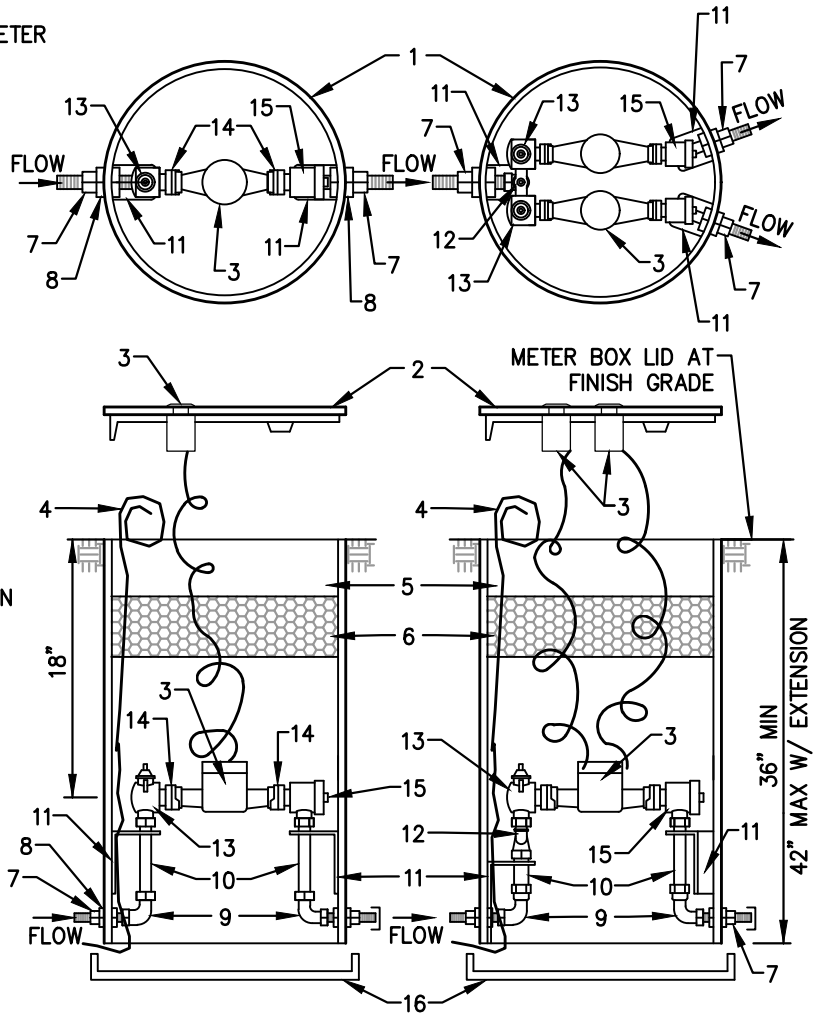




MATERIALS LIST:

1. PVC BOX MIN WALL THICKNESS 0.300", MUELLER 18" DIAMETER RIGID METER PIT BOX FACTORY EQUIPPED AS LISTED, CONFORMING TO AWWA C800
2. CAST IRON LOCKING LID W/ 2" DIA TRANSPONDER OPENING(S) MUELLER METER BOX SETTER LIDS (1" SINGLE: MUELLER NO 780113) (3/4" DOUBLE: MUELLER NO 780111)
3. WATER METER(S) & TRANSPONDER(S) SUPPLIED BY CARSON CITY WATER UTILITY
4. BLUE TRACER WIRE EXTEND INTO METER PITSETTER 48" MIN
5. AIR SPACE
6. INSULATION PAD (4" THICK)
7. BRASS NIPPLE WITH HEX-FLATS (1" IP MINIMUM INLET DIAMETER)
8. BRASS HEX NUT
9. BRASS THREADED ELBOW
10. BRASS PIPE RISER
11. METAL SUPPORT BRACKET
12. BRASS 1" INLET X 3/4" OUTLET U-BRANCH
-  13. BRASS LOCKABLE FULL-PORT BALL VALVE MUELLER PART NO B-24265N
14. BRASS METER ADAPTOR TO SET 5/8" X 3/4" METER. FORD PART NO A24-NL
15. BRASS DUAL CHECK VALVE CONFORMING TO ASSE
16. ALUMINUM BOTTOM



NOTES:

1. ALL BRANDS AND PART NUMBERS ARE FOR REFERENCE ONLY AND MAY BE SUBSTITUTED WITH A CARSON CITY APPROVED EQUAL.
2. A SINGLE PIT SETTER EXTENSION (6 INCH TOTAL MAX) MAY BE USED UPON APPROVAL BY CARSON CITY WATER UTILITY.
-  3. SINGLE 5/8" X 3/4" METERS SHALL BE SET IN SINGLE 1" METER PITS WITH AN ADAPTOR (FORD PART NUMBER A24-NL).
-  4. PIT SETTERS SHALL BE LOCATED OUTSIDE OF VEHICLE TRAFFIC AREAS, INCLUDING INCIDENTAL TRAFFIC AREAS, AND PARKING SHALL NOT BE ALLOWED OVER A PIT SETTER.

NO.	REVISION	DATE	STANDARD DETAIL FOR PUBLIC WORKS CONSTRUCTION	SECTION
	RIGID SET	7/19	1" SINGLE AND 3/4" DOUBLE PIT SETTER 	CARSON CITY
	MAT 13 &	10/25		DRAWING NO.
	NOTES 3,4			C-3.2.3
APPROVED BY: <i>DA</i>		10/25		DATE
				OCT 2025