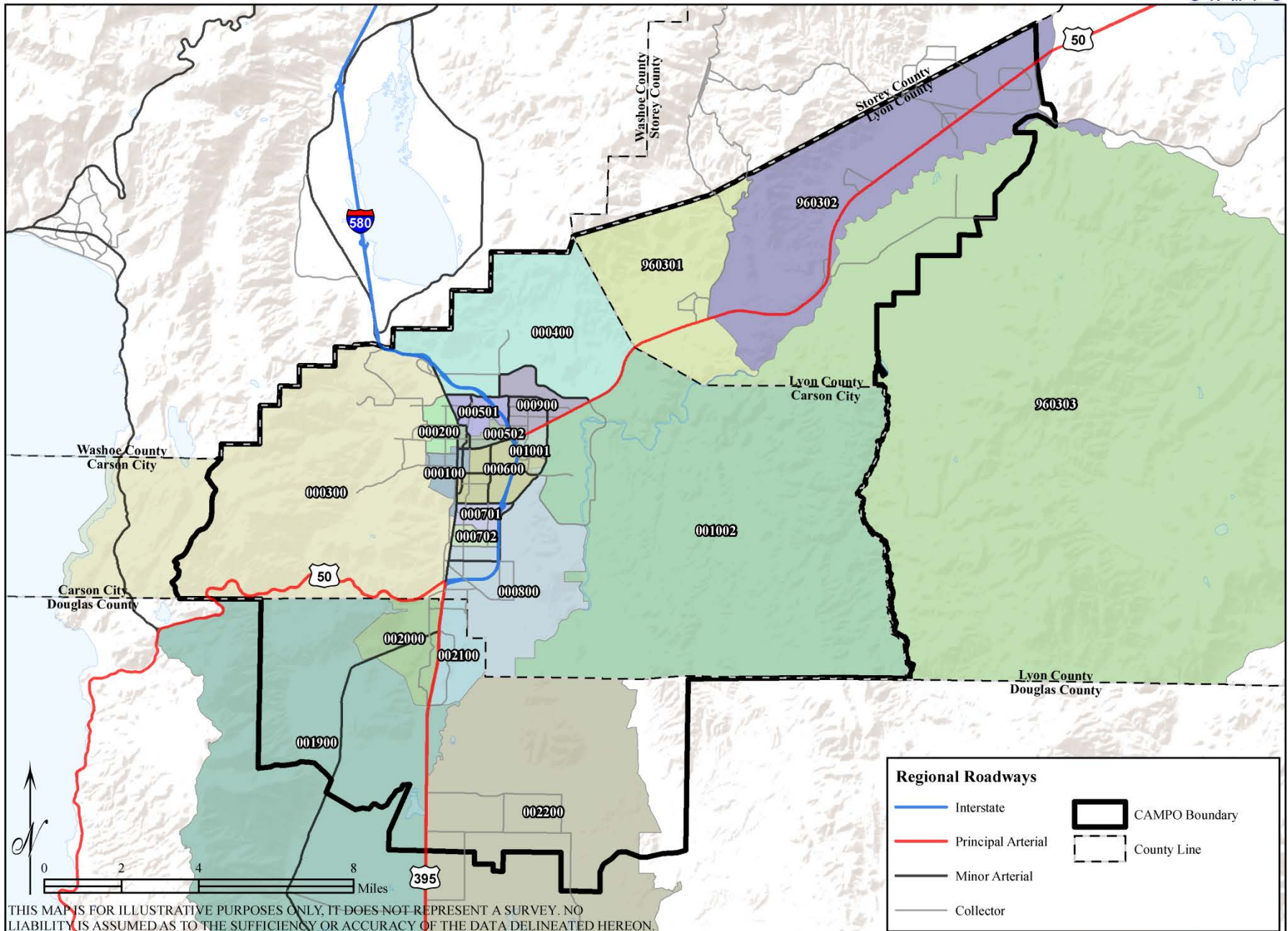




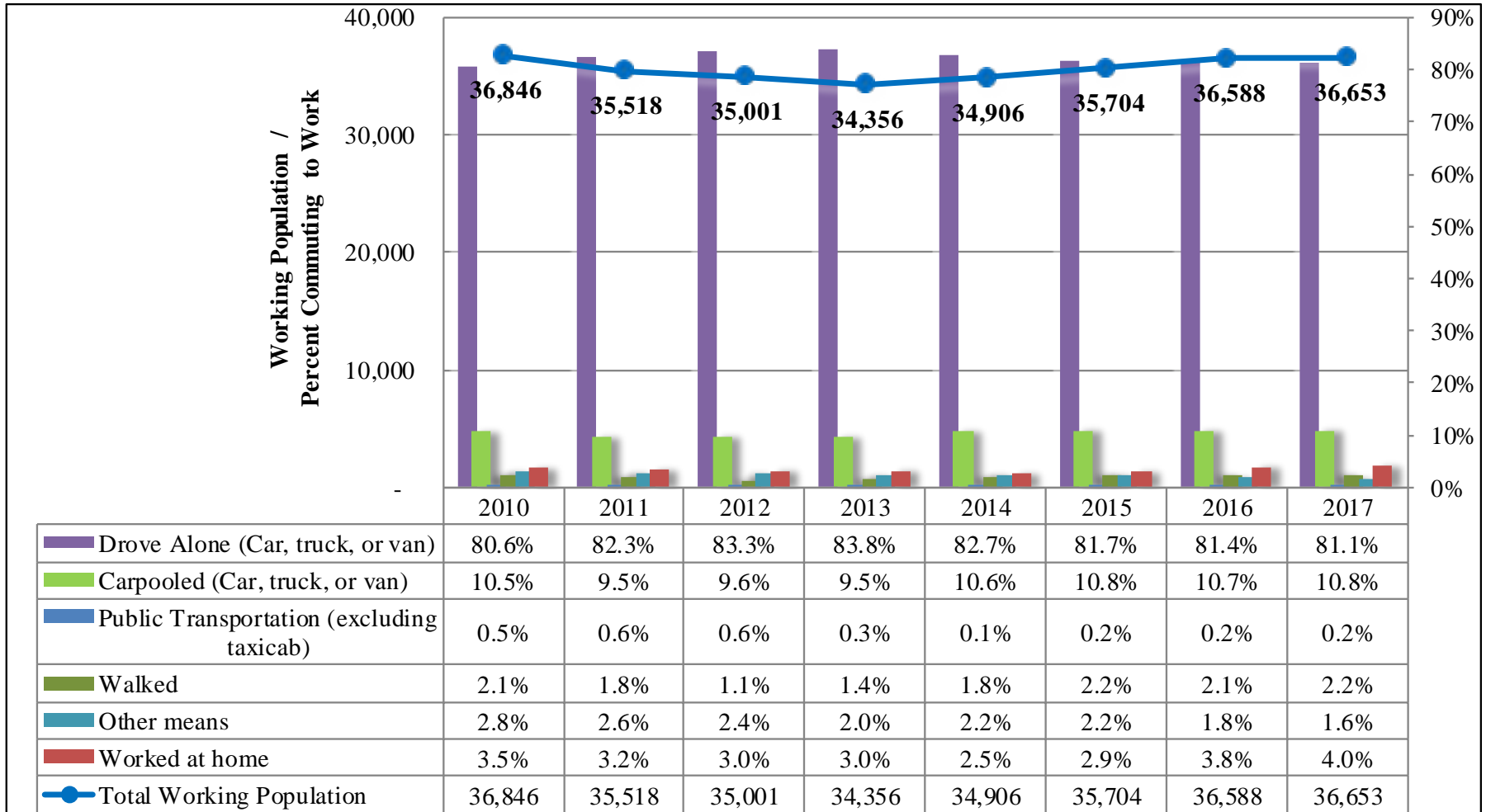
# 2019 Network Monitoring Report

Figure 2.1 - CAMPO Census Tracts



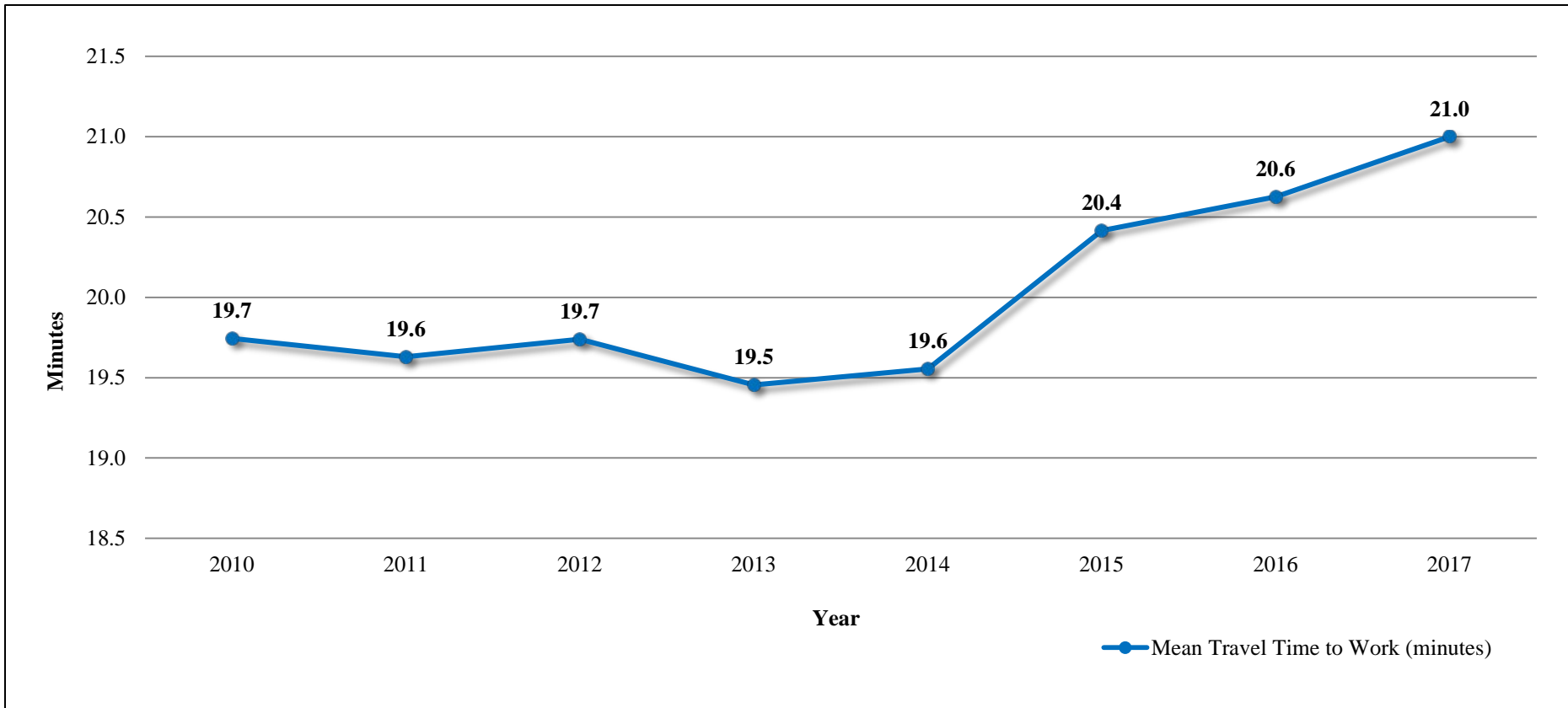
THIS MAP IS FOR ILLUSTRATIVE PURPOSES ONLY, IT DOES NOT REPRESENT A SURVEY. NO LIABILITY IS ASSUMED AS TO THE SUFFICIENCY OR ACCURACY OF THE DATA DELINEATED HEREON.

**Figure 2.4 Mode to Work (2010-2017)**



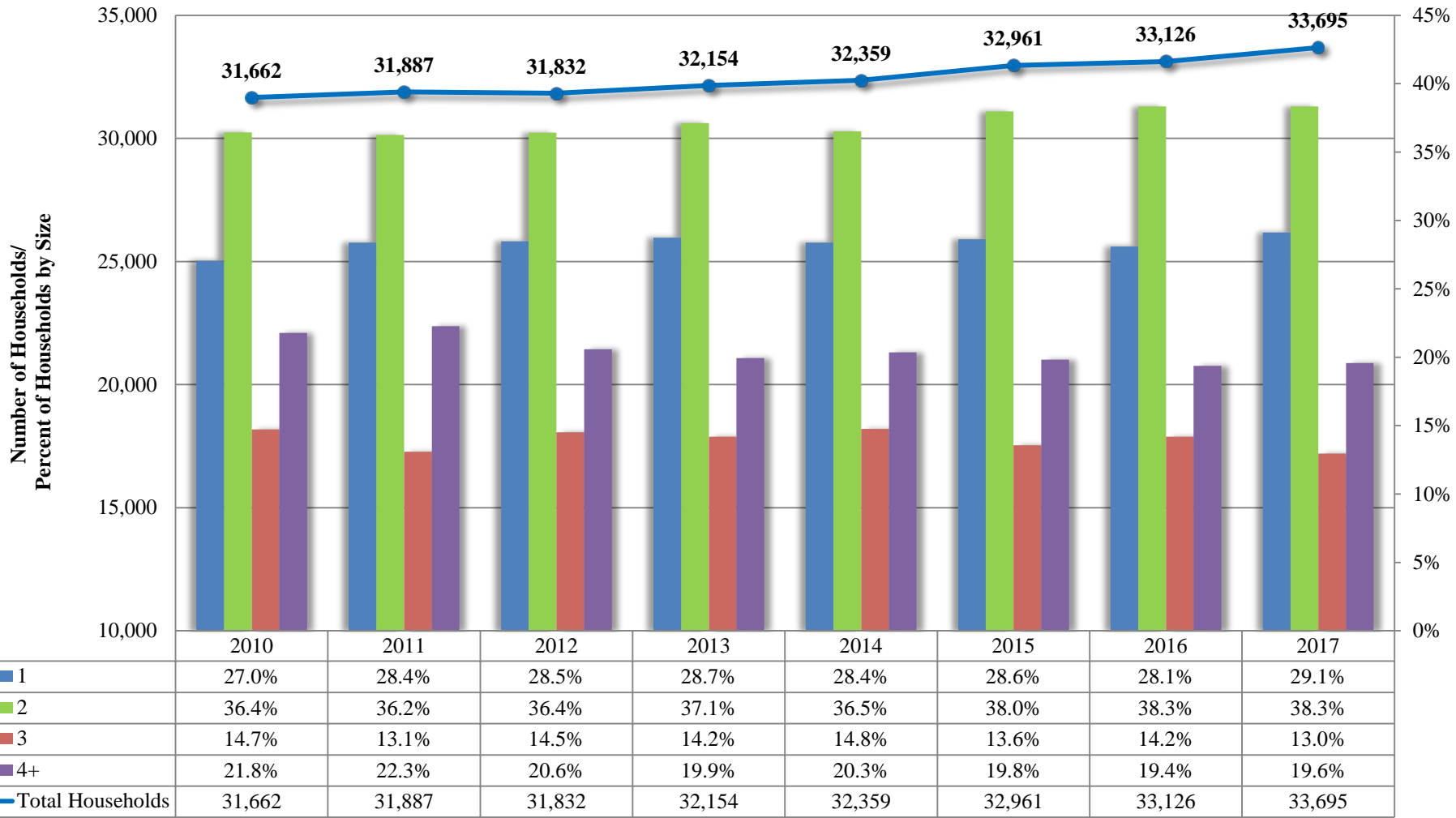
Source: ACS Selected Economic Characteristics, Table DP03. Annual Estimates from American Community Survey (ACS) 5-year Estimates.

**Figure 2.5 Mean Travel Time to Work (2010-2017)**



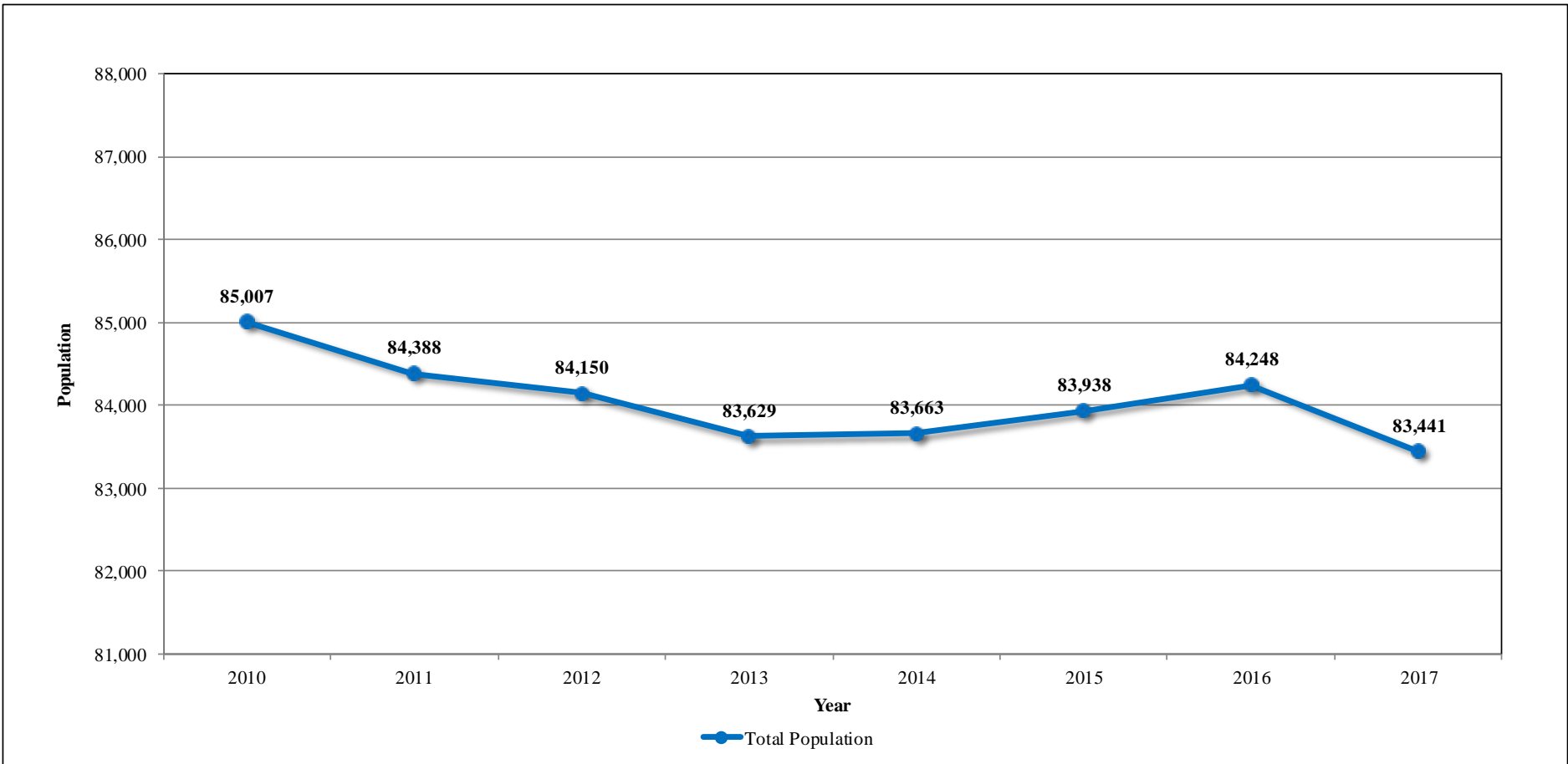
Source: ACS Selected Economic Characteristics, Table DP03. Annual estimates from American Community Survey (ACS) 5-year Estimates.

**Figure 2.8 Household Size (2010-2017)**



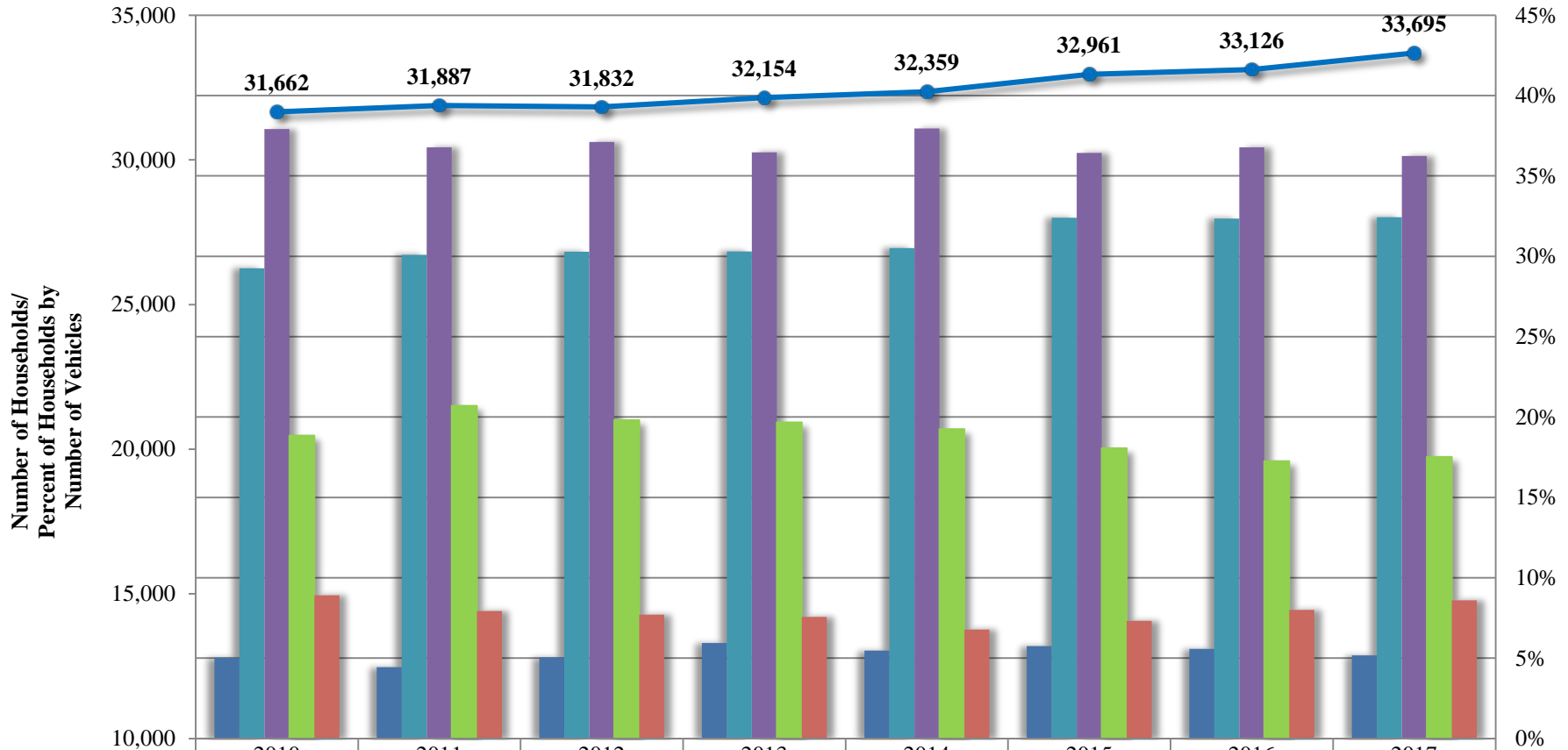
Source: ACS Household Size by Vehicles Available, Table B08201. Annual Estimates from American Community Survey (ACS) 5-year Estimates.

**Figure 2.2 Population (2010-2017)**



Source: ACS Demographic and Housing Estimates, Table DP05. Annual Estimates from American Community Survey (ACS) 5-year Estimates.

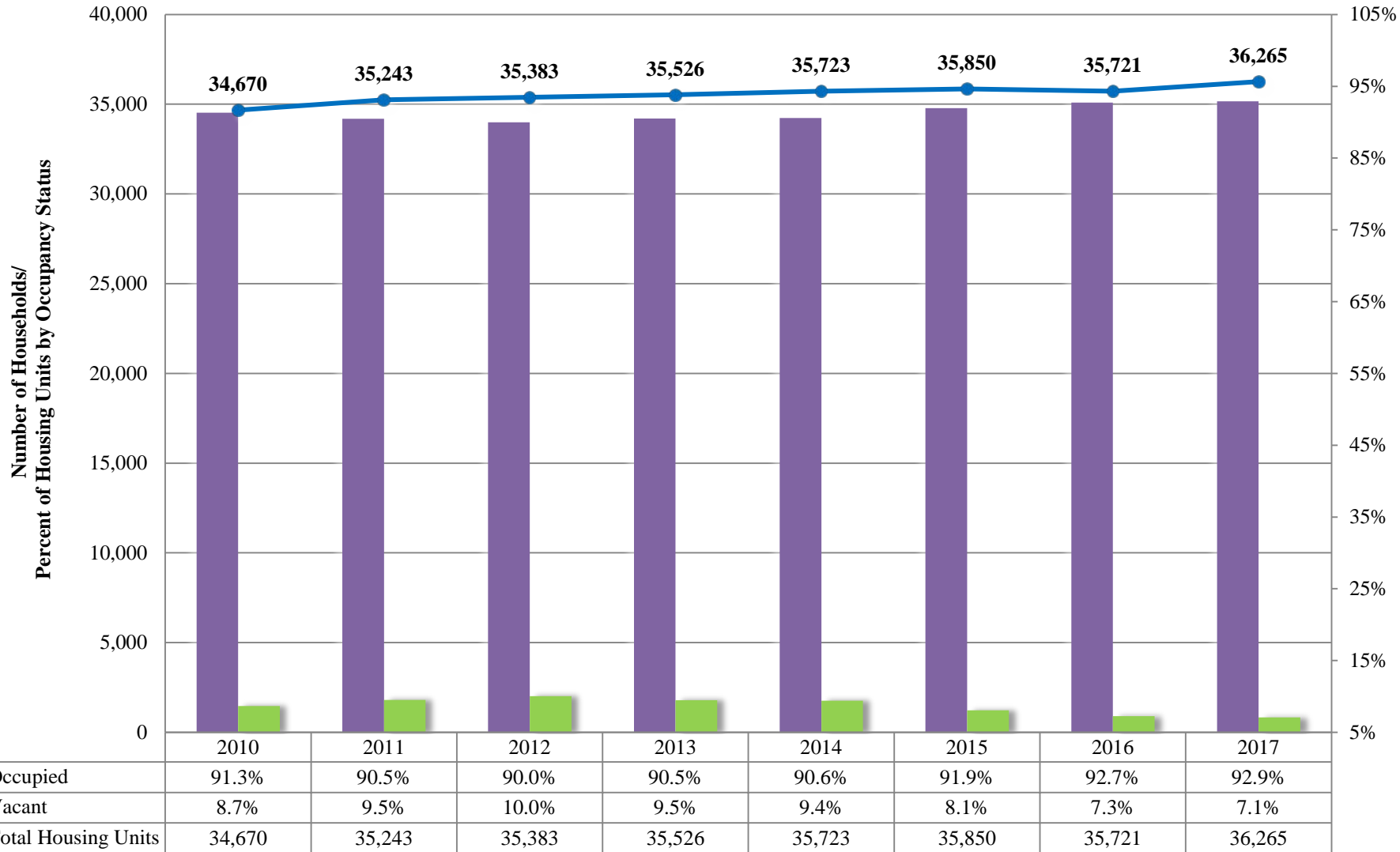
**Figure 2.7 Household Vehicles (2010-2017)**



|                  | 2010   | 2011   | 2012   | 2013   | 2014   | 2015   | 2016   | 2017   |
|------------------|--------|--------|--------|--------|--------|--------|--------|--------|
| 0                | 5.0%   | 4.5%   | 5.1%   | 6.0%   | 5.5%   | 5.8%   | 5.6%   | 5.2%   |
| 1                | 29.3%  | 30.1%  | 30.3%  | 30.3%  | 30.5%  | 32.4%  | 32.4%  | 32.4%  |
| 2                | 37.9%  | 36.8%  | 37.1%  | 36.5%  | 38.0%  | 36.4%  | 36.8%  | 36.2%  |
| 3                | 18.9%  | 20.7%  | 19.8%  | 19.7%  | 19.2%  | 18.1%  | 17.3%  | 17.5%  |
| 4+               | 8.9%   | 7.9%   | 7.7%   | 7.6%   | 6.8%   | 7.3%   | 8.0%   | 8.6%   |
| Total Households | 31,662 | 31,887 | 31,832 | 32,154 | 32,359 | 32,961 | 33,126 | 33,695 |

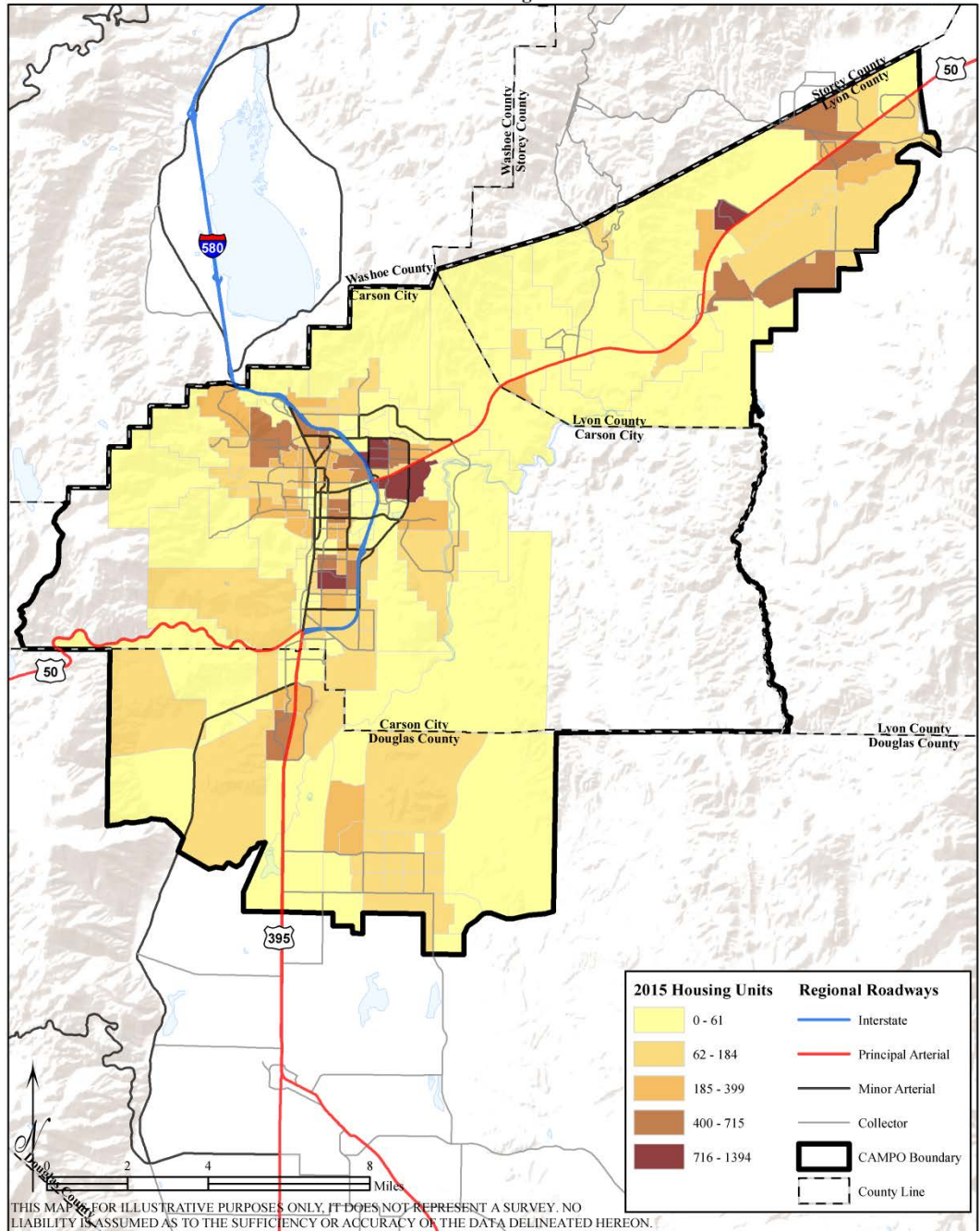
Source: ACS Household Size by Vehicles Available, Table B08201. Annual Estimates from American Community Survey (ACS) 5-year Estimates.

**Figure 2.9 Occupancy Status (2010-2017)**



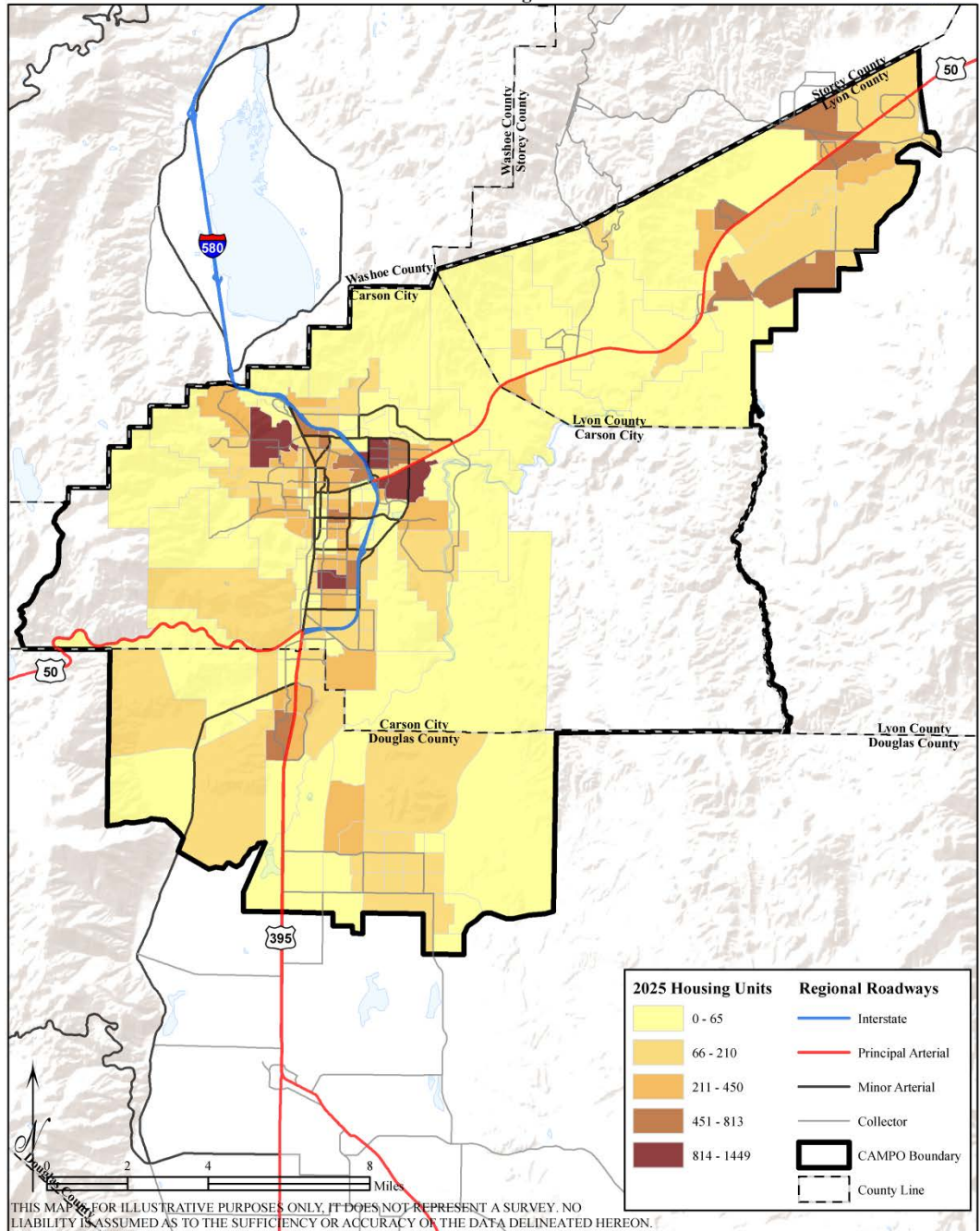
Source: ACS Occupancy Status, Table B25002. All Annual Estimates Represent American Community Survey (ACS) 5-year Estimates.

Figure 3.2 - Transportation Analysis Zones (TAZs)  
2015 Housing Units



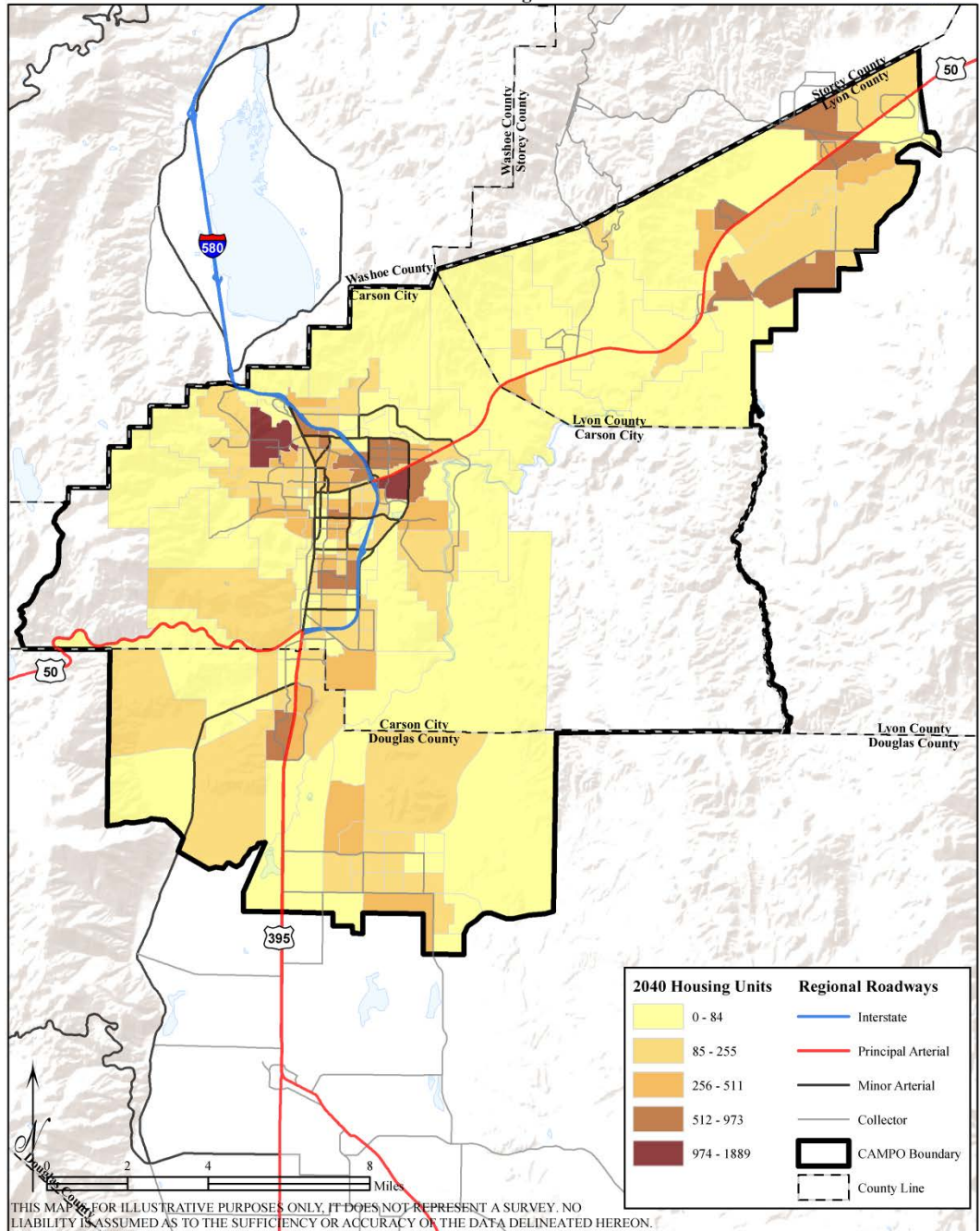
THIS MAP IS FOR ILLUSTRATIVE PURPOSES ONLY. IT DOES NOT REPRESENT A SURVEY. NO LIABILITY IS ASSUMED AS TO THE SUFFICIENCY OR ACCURACY OF THE DATA DELINEATED HEREON.

Figure 3.3 - Transportation Analysis Zones (TAZs)  
2025 Housing Units



THIS MAP IS FOR ILLUSTRATIVE PURPOSES ONLY. IT DOES NOT REPRESENT A SURVEY. NO LIABILITY IS ASSUMED AS TO THE SUFFICIENCY OR ACCURACY OF THE DATA DELINEATED HEREON.

Figure 3.4 - Transportation Analysis Zones (TAZs)  
2040 Housing Units



THIS MAP IS FOR ILLUSTRATIVE PURPOSES ONLY. IT DOES NOT REPRESENT A SURVEY. NO LIABILITY IS ASSUMED AS TO THE SUFFICIENCY OR ACCURACY OF THE DATA DELINEATED HEREON.

Figure 3.5 - Transportation Analysis Zones (TAZs)  
2015 Commercial Employment

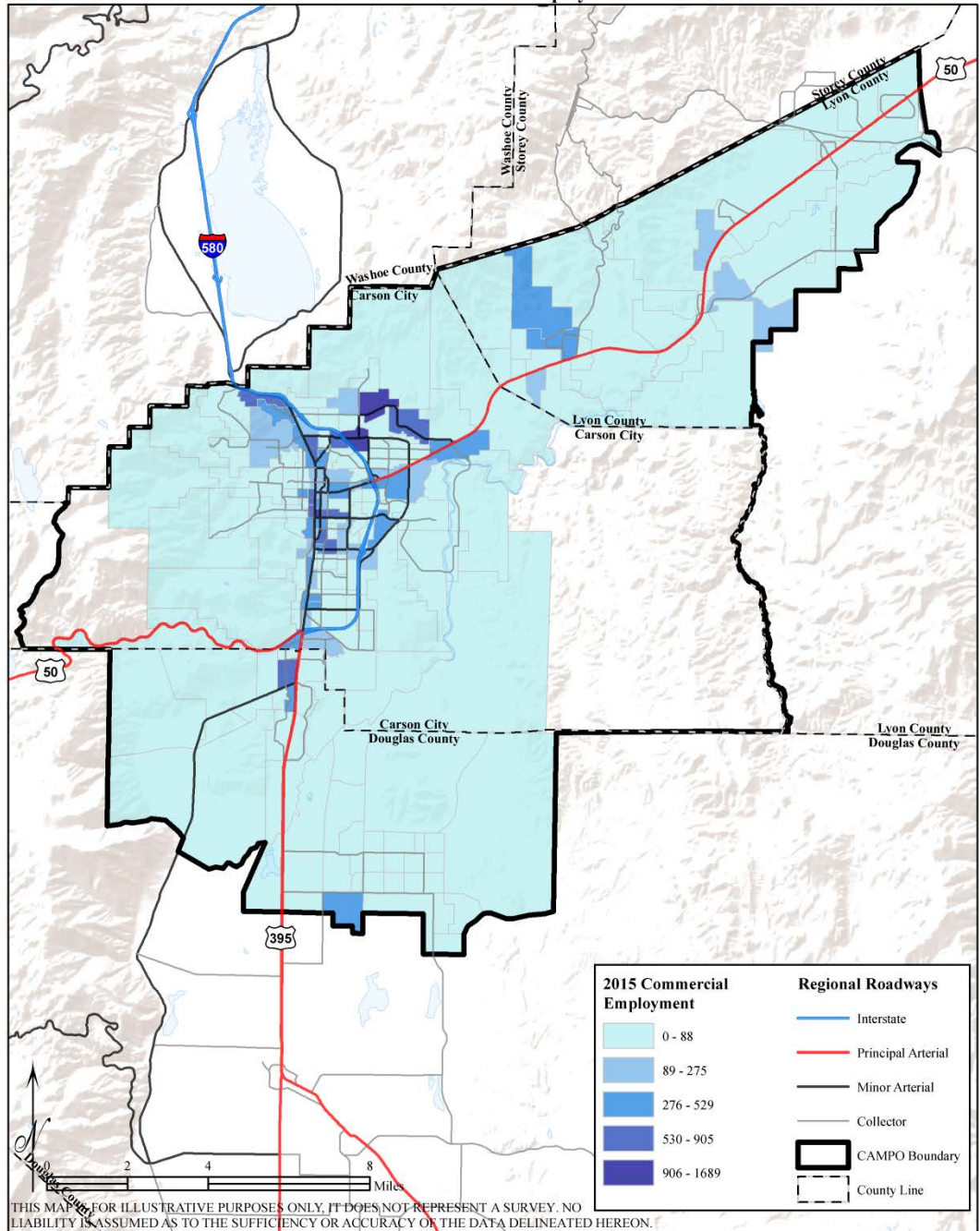
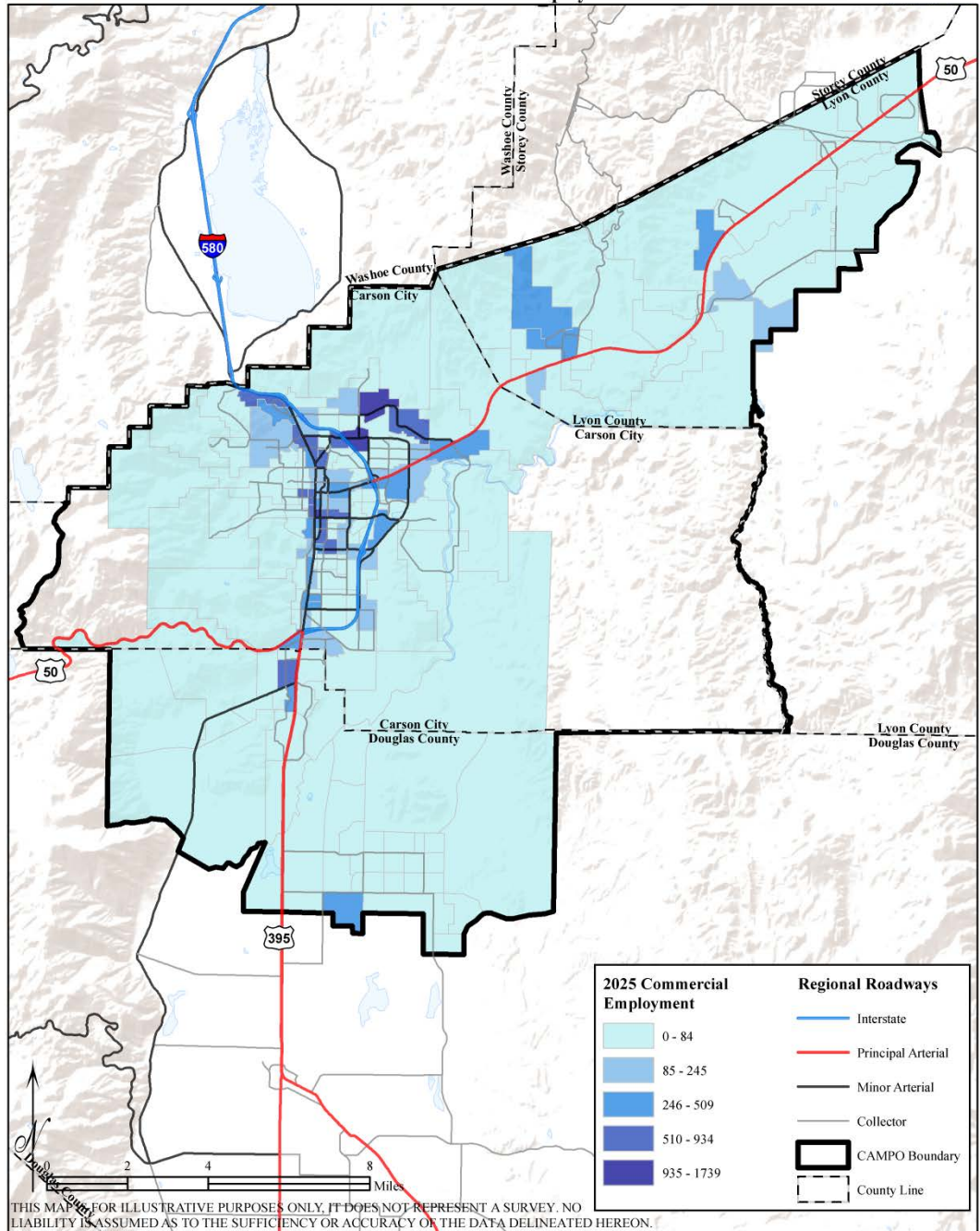
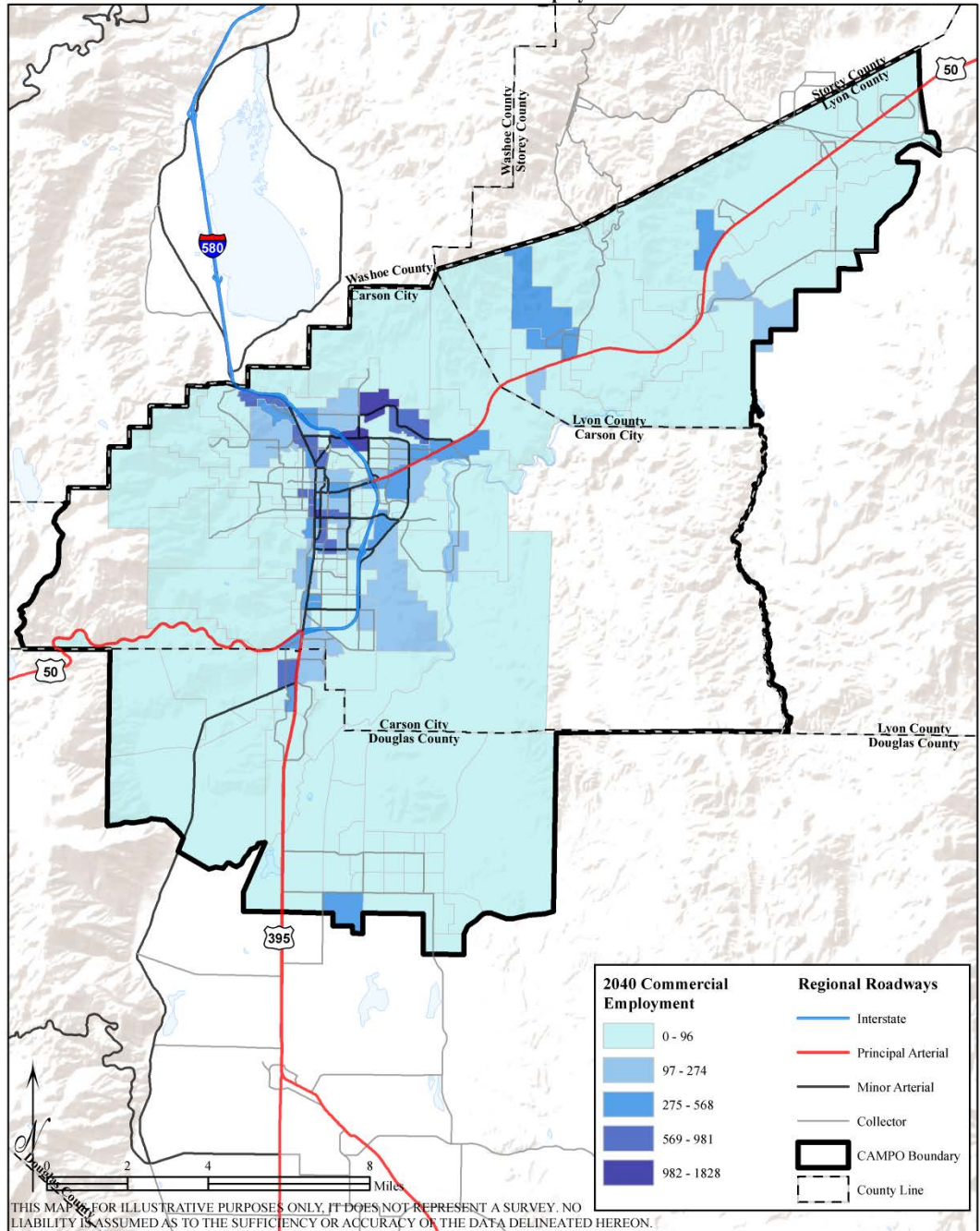


Figure 3.6 - Transportation Analysis Zones (TAZs)  
2025 Commercial Employment



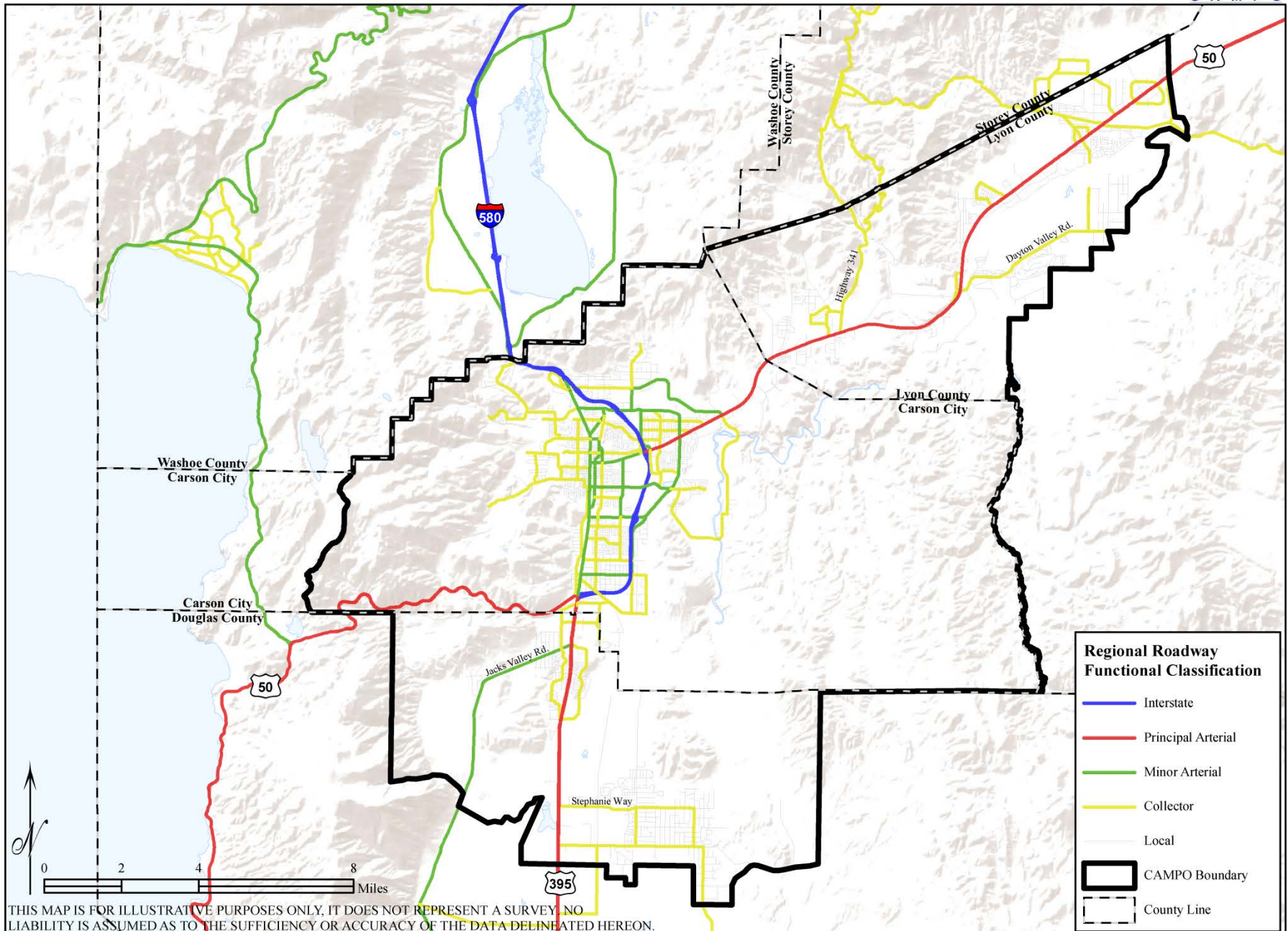
THIS MAP IS FOR ILLUSTRATIVE PURPOSES ONLY. IT DOES NOT REPRESENT A SURVEY. NO LIABILITY IS ASSUMED AS TO THE SUFFICIENCY OR ACCURACY OF THE DATA DELINEATED HEREON.

Figure 3.7 - Transportation Analysis Zones (TAZs)  
2040 Commercial Employment



THIS MAP IS FOR ILLUSTRATIVE PURPOSES ONLY. IT DOES NOT REPRESENT A SURVEY. NO LIABILITY IS ASSUMED AS TO THE SUFFICIENCY OR ACCURACY OF THE DATA DELINEATED HEREON.

Figure 4.1 - Functional Classification of Roads



THIS MAP IS FOR ILLUSTRATIVE PURPOSES ONLY, IT DOES NOT REPRESENT A SURVEY. NO LIABILITY IS ASSUMED AS TO THE SUFFICIENCY OR ACCURACY OF THE DATA DELINEATED HEREON.

Figure 4.3 - 2017 NDOT Vehicle Volume Dayton Area

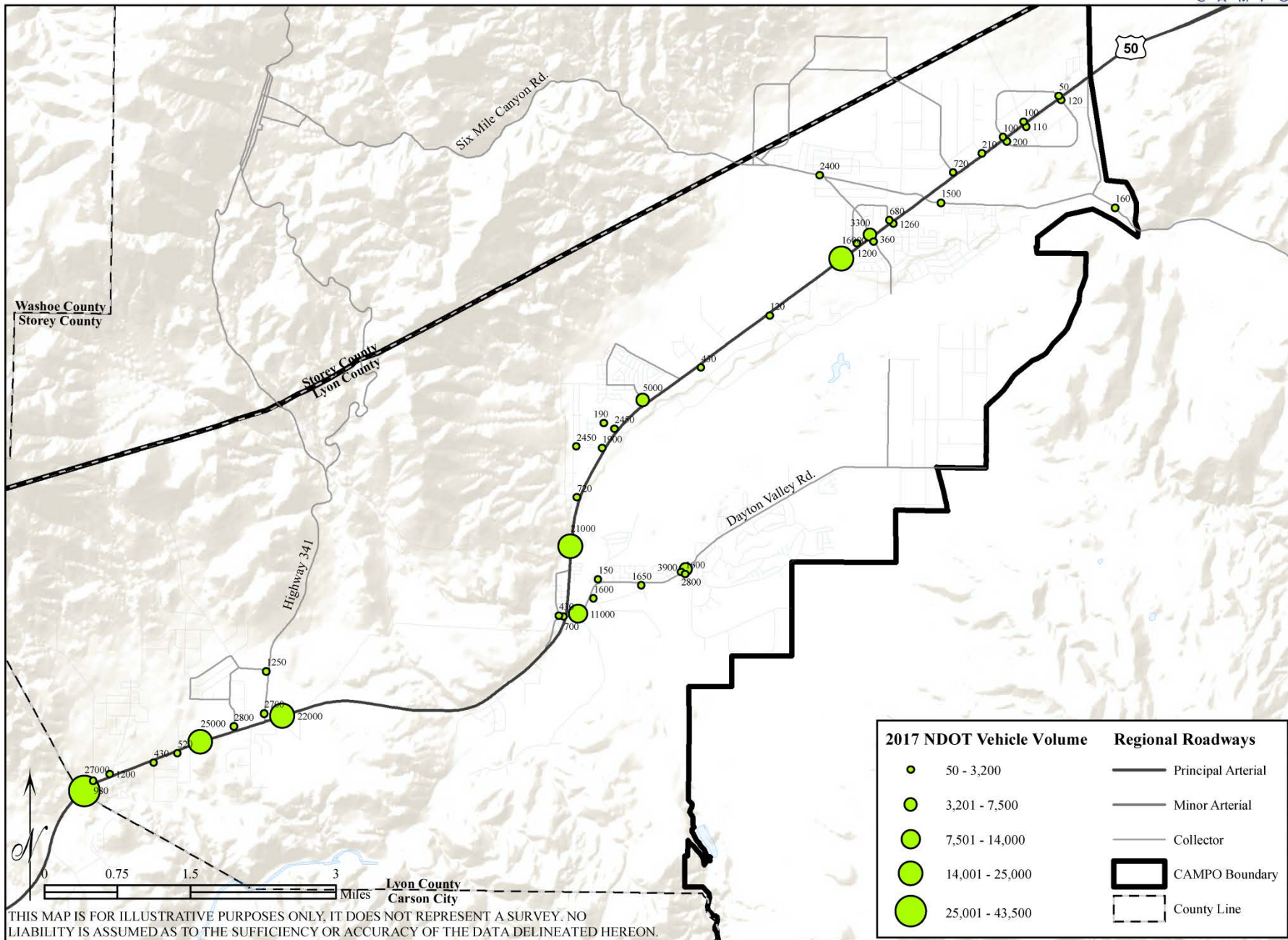


Figure 4.4 - 2017 NDOT Vehicle Volume North Carson City

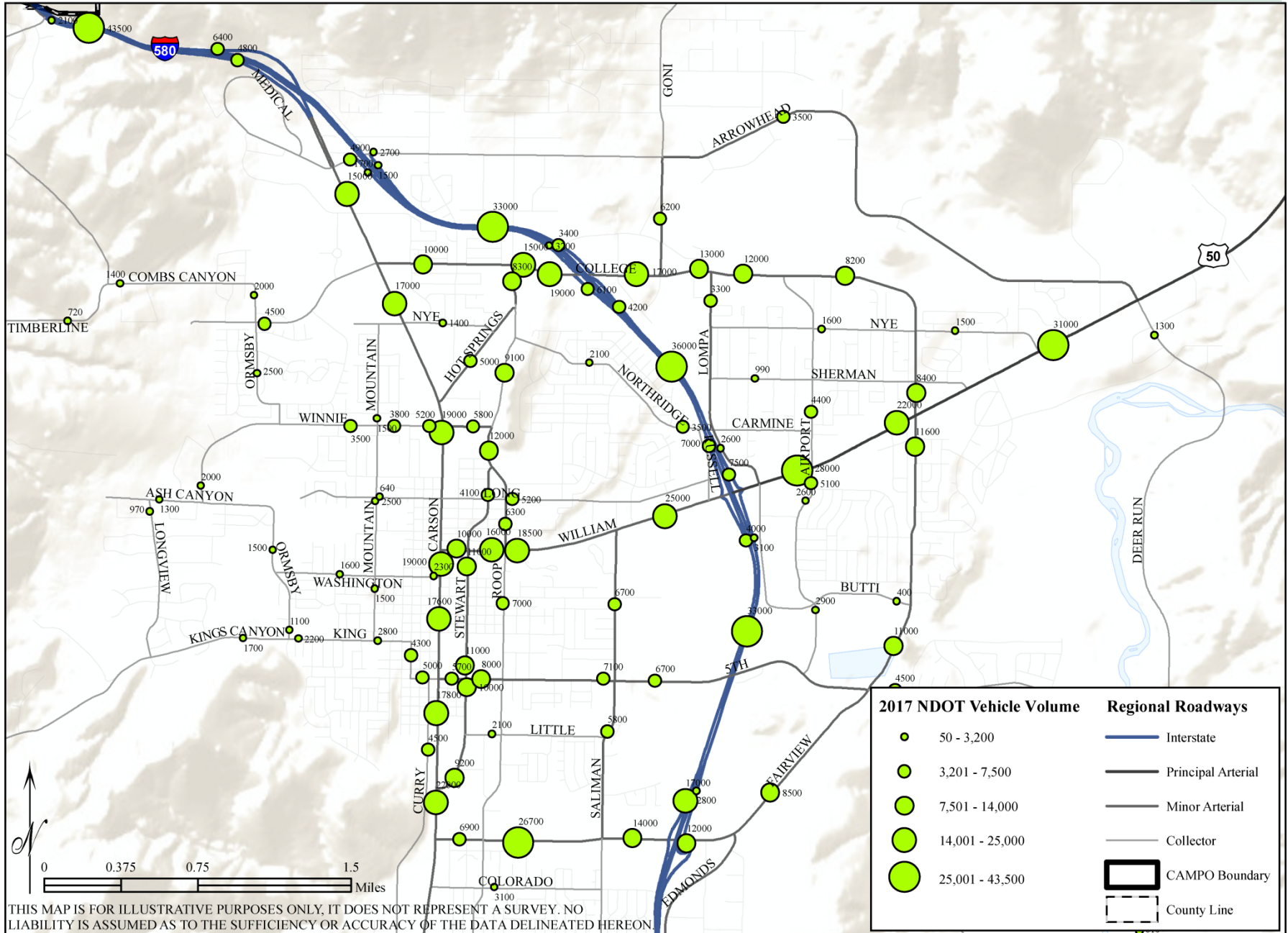
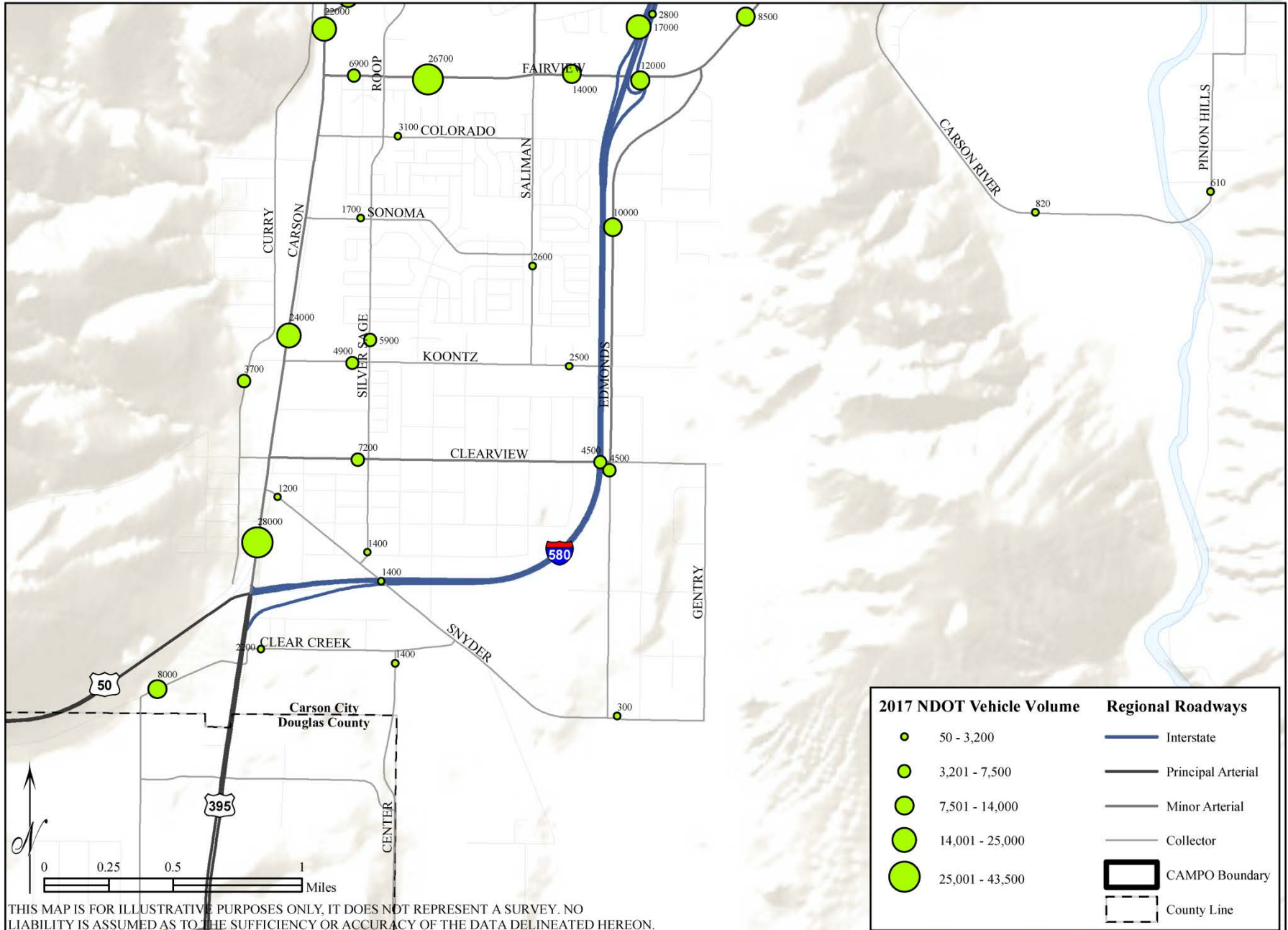
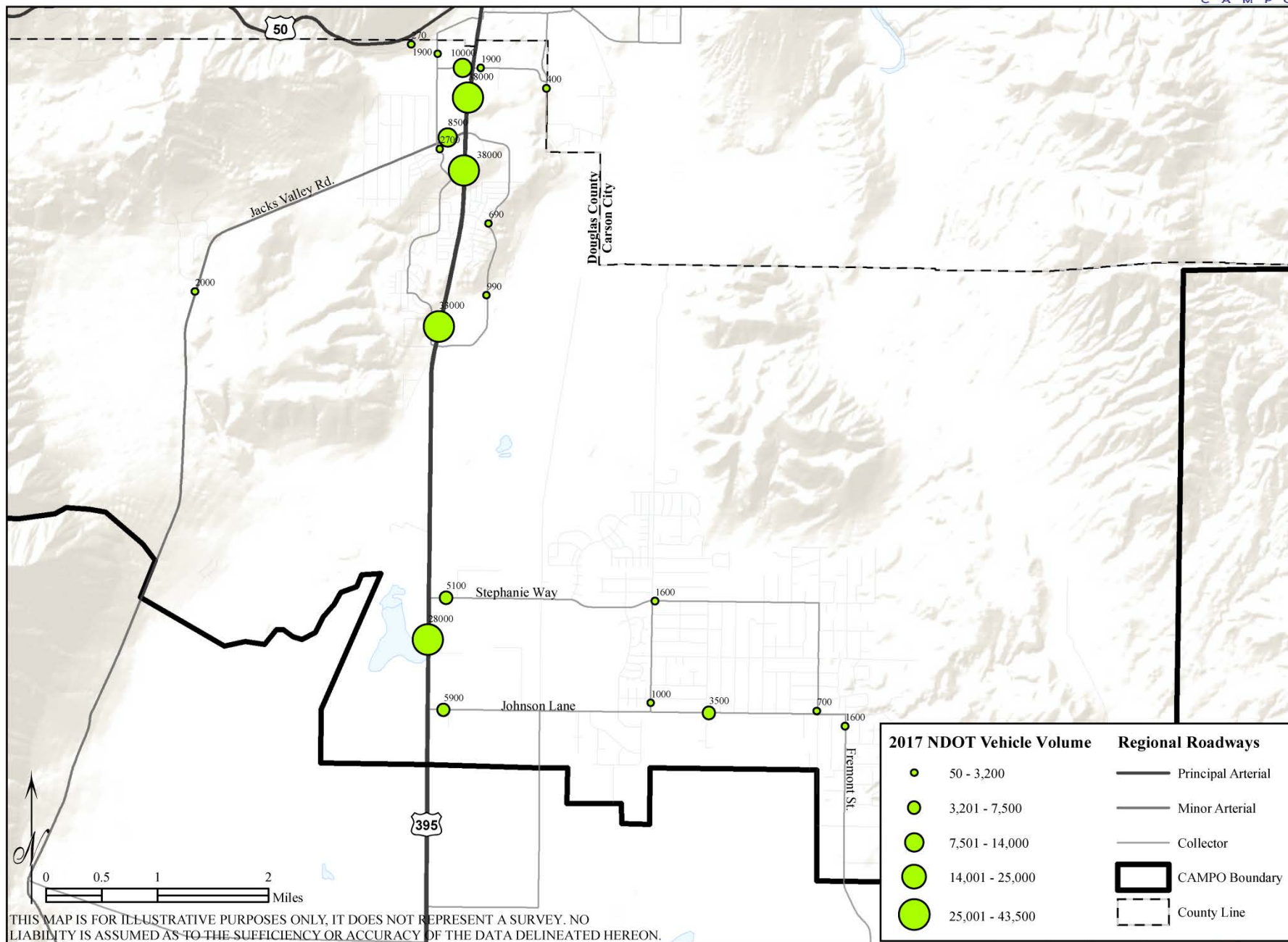


Figure 4.5 - 2017 NDOT Vehicle Volume South Carson City



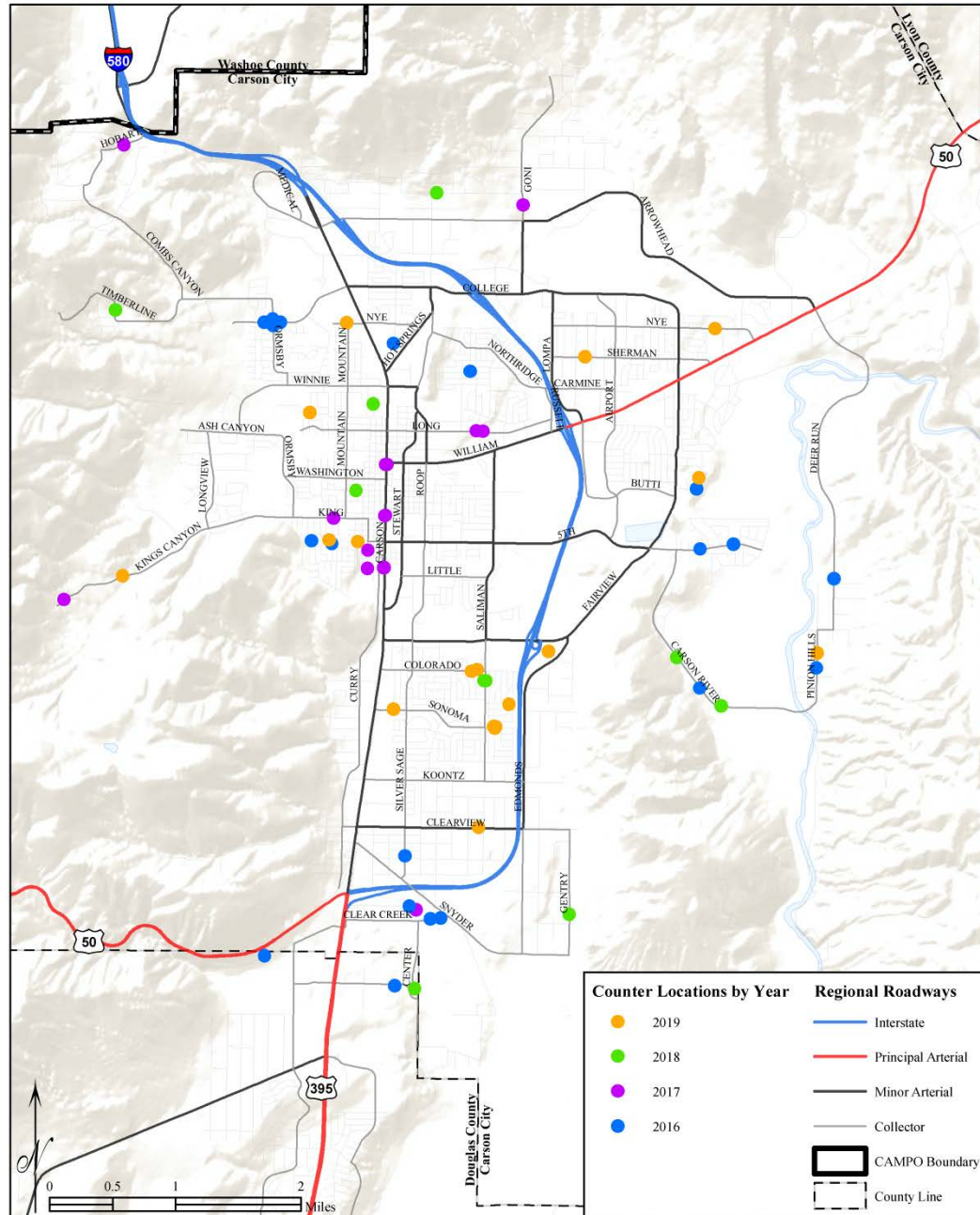
THIS MAP IS FOR ILLUSTRATIVE PURPOSES ONLY, IT DOES NOT REPRESENT A SURVEY. NO LIABILITY IS ASSUMED AS TO THE SUFFICIENCY OR ACCURACY OF THE DATA DELINEATED HEREON.

Figure 4.6 - 2017 NDOT Vehicle Volume North Douglas County



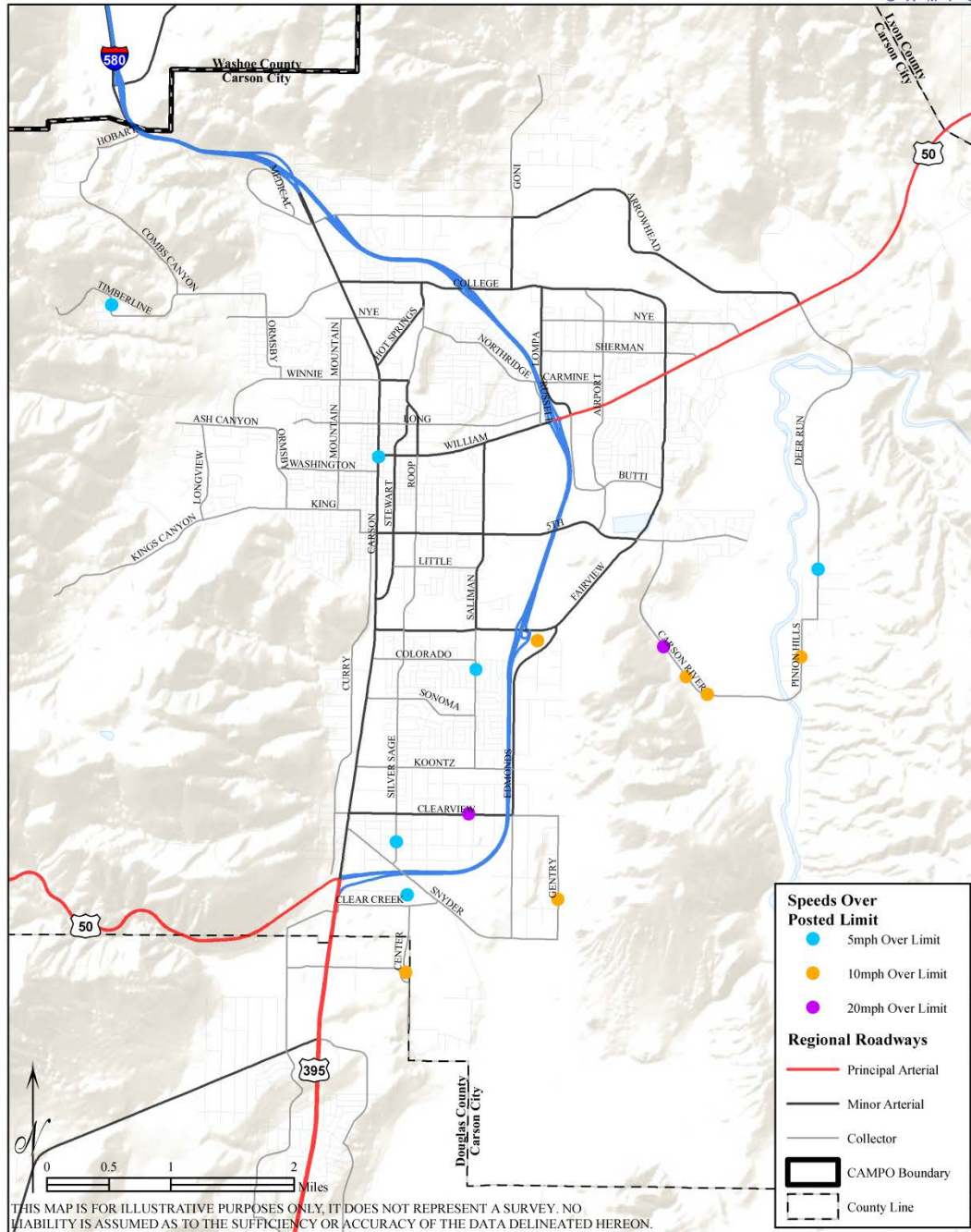
THIS MAP IS FOR ILLUSTRATIVE PURPOSES ONLY, IT DOES NOT REPRESENT A SURVEY. NO LIABILITY IS ASSUMED AS TO THE SUFFICIENCY OR ACCURACY OF THE DATA DELINEATED HEREON.

Figure 4.7 - 2016-2019 CAMPO Vehicle Counter Locations Carson City



THIS MAP IS FOR ILLUSTRATIVE PURPOSES ONLY, IT DOES NOT REPRESENT A SURVEY. NO LIABILITY IS ASSUMED AS TO THE SUFFICIENCY OR ACCURACY OF THE DATA DELINEATED HEREON.

Figure 4.8 - 2016-2019 CAMPO High Speed Locations in Carson City

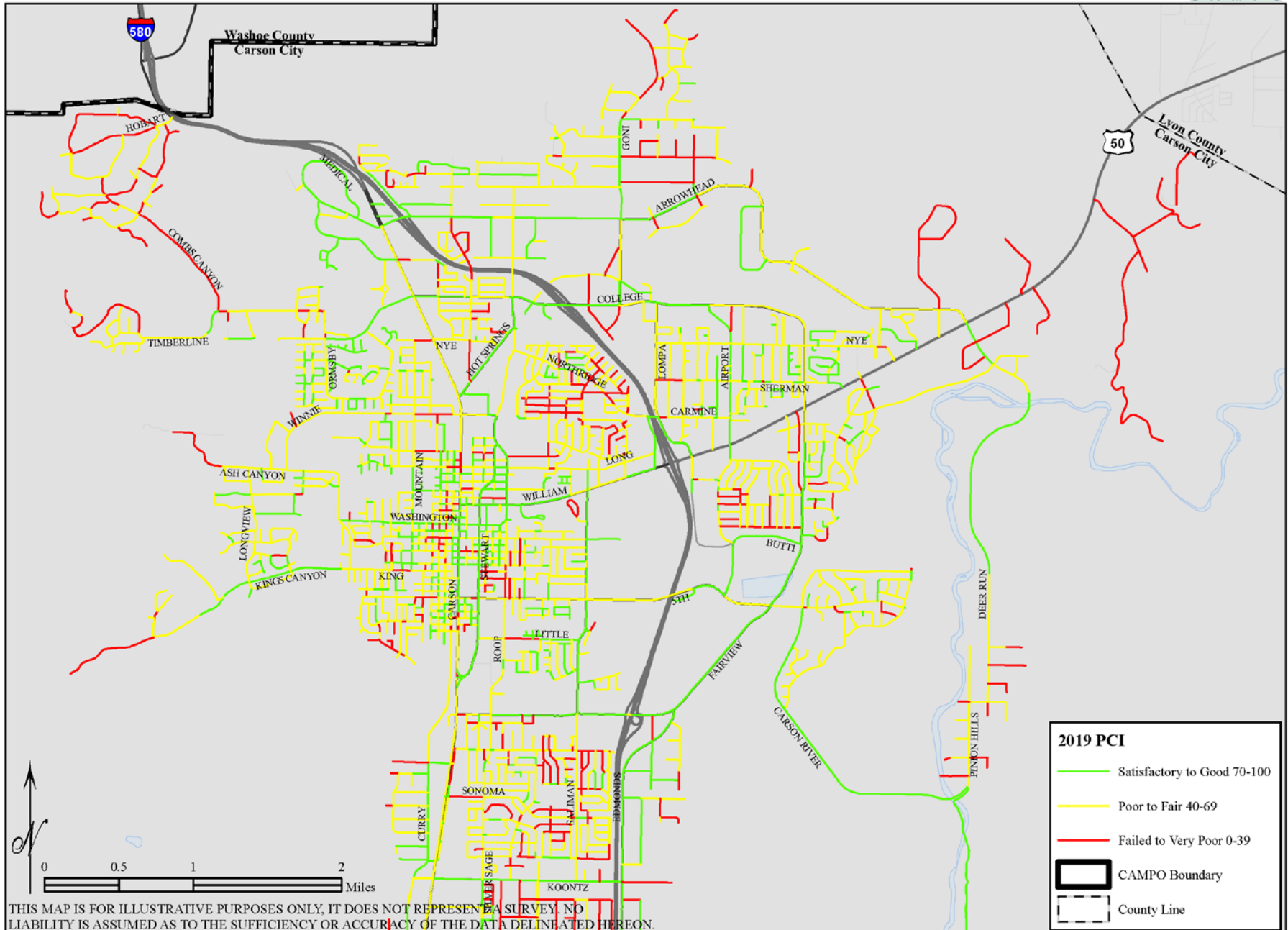


**Table 4.1 Pavement Condition Index for Carson City**

| Pavement Condition Index (PCI) - Annual Report Card |                |            |      |      |       |                                |
|---|----------------|------------|------|------|-------|--------------------------------|
|   | Facility Type  | Actual PCI |      |      |       |                                |
|   |                | 2015       | 2016 | 2017 | 2019* | Percent Change<br>2017 to 2019 |
| City-wide   | Regional Roads | 69         | 68   | 68   | 66    | -3%                            |
|   | Local Roads    | 64         | 63   | 62   | 57    | -8%                            |
|   | All Roads      | 66         | 65   | 65   | 60    | -8%                            |
| Performance District 1                              | Regional Roads | 68         | 67   | 67   | 66    | -1%                            |
|   | Local Roads    | 63         | 63   | 62   | 56    | -10%                           |
|   | All Roads      | 65         | 65   | 64   | 59    | -8%                            |
| Performance District 2                              | Regional Roads | 69         | 60   | 69   | 70    | 1%                             |
|   | Local Roads    | 66         | 69   | 62   | 58    | -6%                            |
|   | All Roads      | 67         | 64   | 65   | 62    | -5%                            |
| Performance District 3                              | Regional Roads | 71         | 51   | 78   | 73    | -6%                            |
|   | Local Roads    | 64         | 60   | 63   | 57    | -10%                           |
|   | All Roads      | 63         | 55   | 70   | 62    | -11%                           |
| Performance District 4                              | Regional Roads | 75         | 73   | 68   | 62    | -9%                            |
|   | Local Roads    | 67         | 64   | 58   | 52    | -10%                           |
|   | All Roads      | 71         | 69   | 63   | 56    | -11%                           |
| Performance District 5                              | Regional Roads | 67         | 67   | 65   | 62    | -5%                            |
|   | Local Roads    | 68         | 69   | 65   | 61    | -6%                            |
|   | All Roads      | 68         | 68   | 65   | 61    | -6%                            |

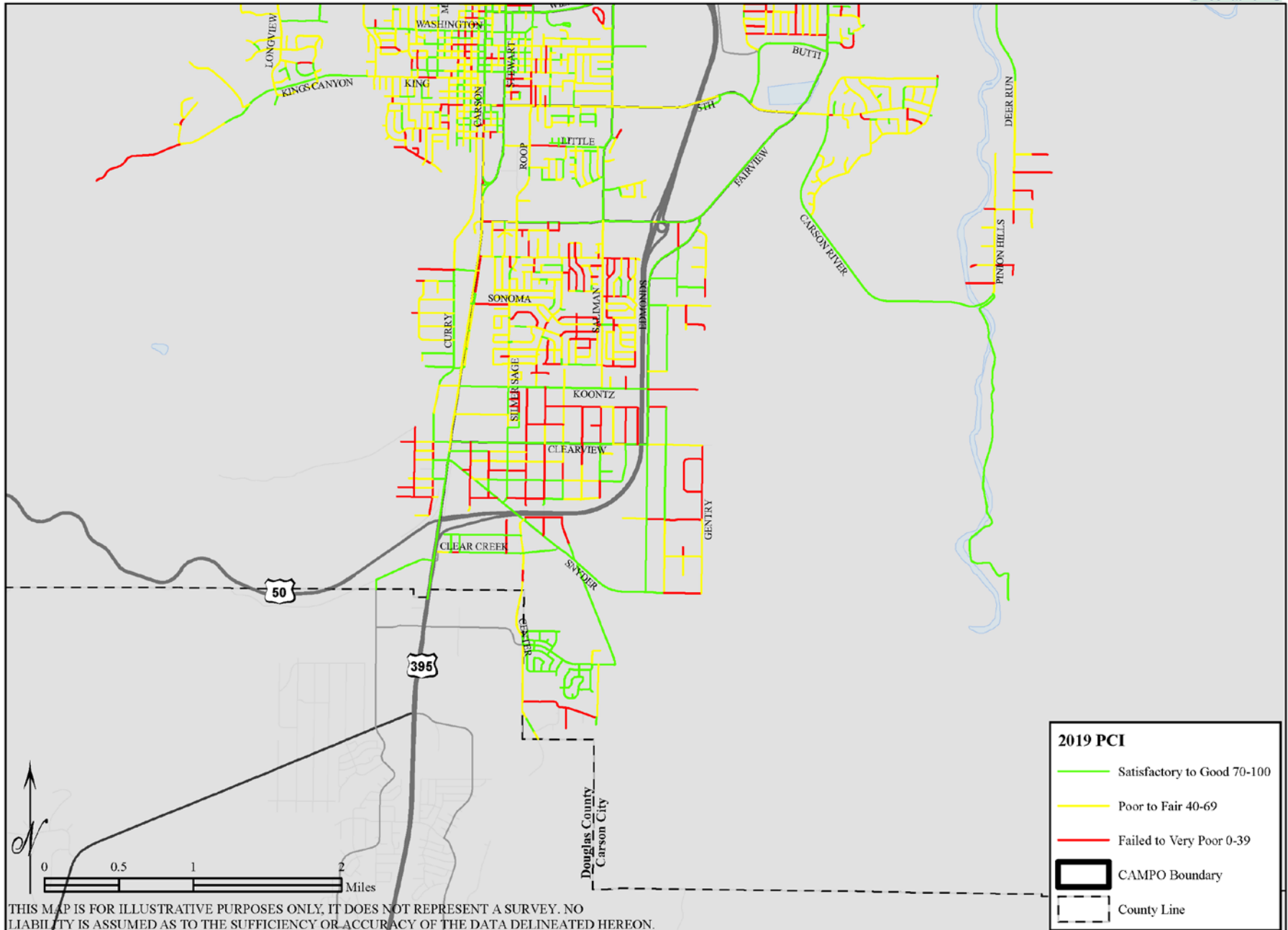
\*Pavement condition reporting has been adjusted from calendar year to fiscal year to align with project implementation timing; as a result calendar 2018 conditions are not reported.

Figure 4.9 - 2019 Pavement Condition Index (PCI) North Carson City



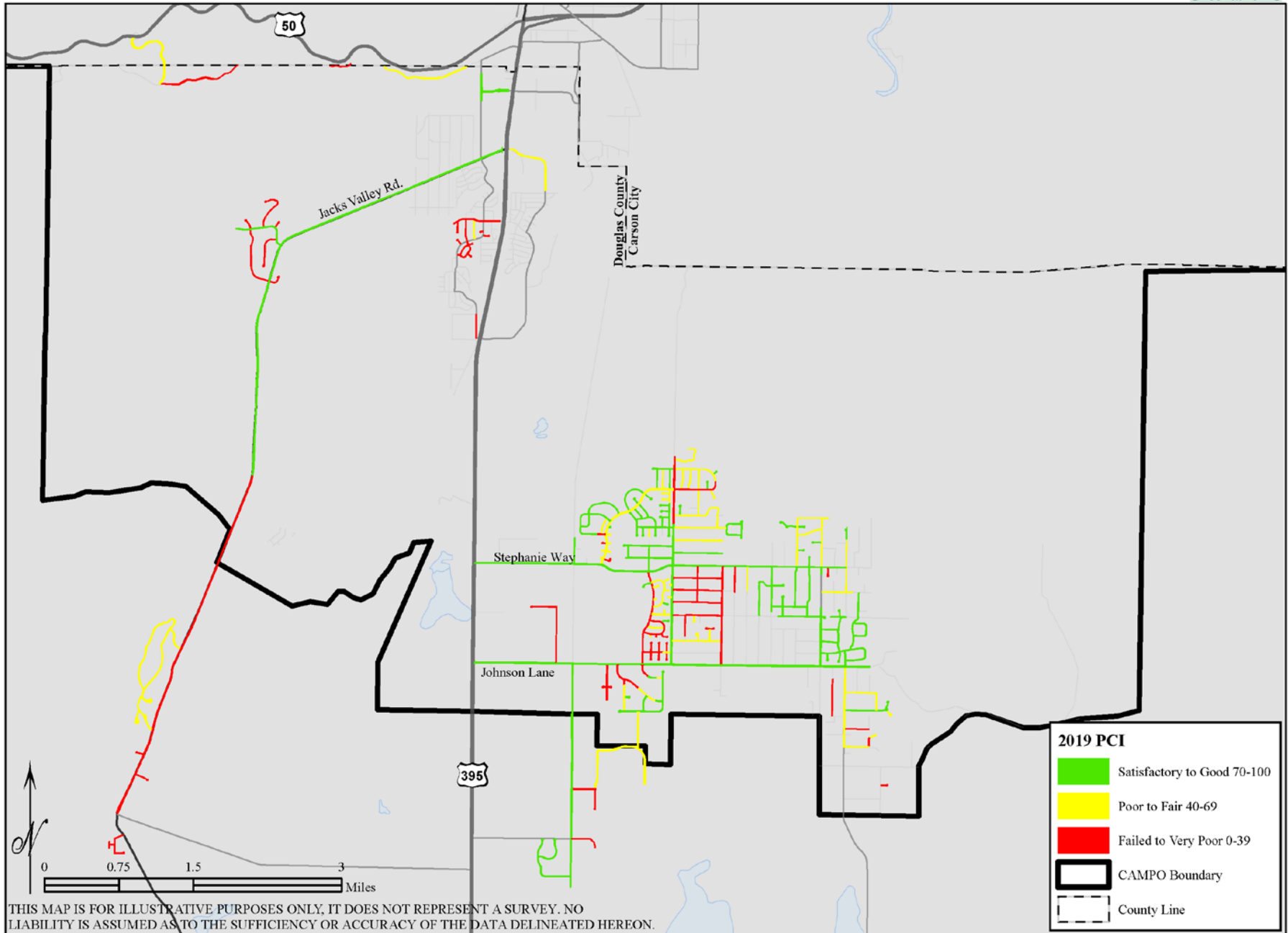
THIS MAP IS FOR ILLUSTRATIVE PURPOSES ONLY, IT DOES NOT REPRESENT A SURVEY. NO LIABILITY IS ASSUMED AS TO THE SUFFICIENCY OR ACCURACY OF THE DATA DELINEATED HEREON.

Figure 4.10 - 2019 Pavement Condition Index (PCI) South Carson City



THIS MAP IS FOR ILLUSTRATIVE PURPOSES ONLY, IT DOES NOT REPRESENT A SURVEY. NO LIABILITY IS ASSUMED AS TO THE SUFFICIENCY OR ACCURACY OF THE DATA DELINEATED HEREON.

Figure 4.11 - 2019 Pavement Condition Index (PCI) North Douglas County



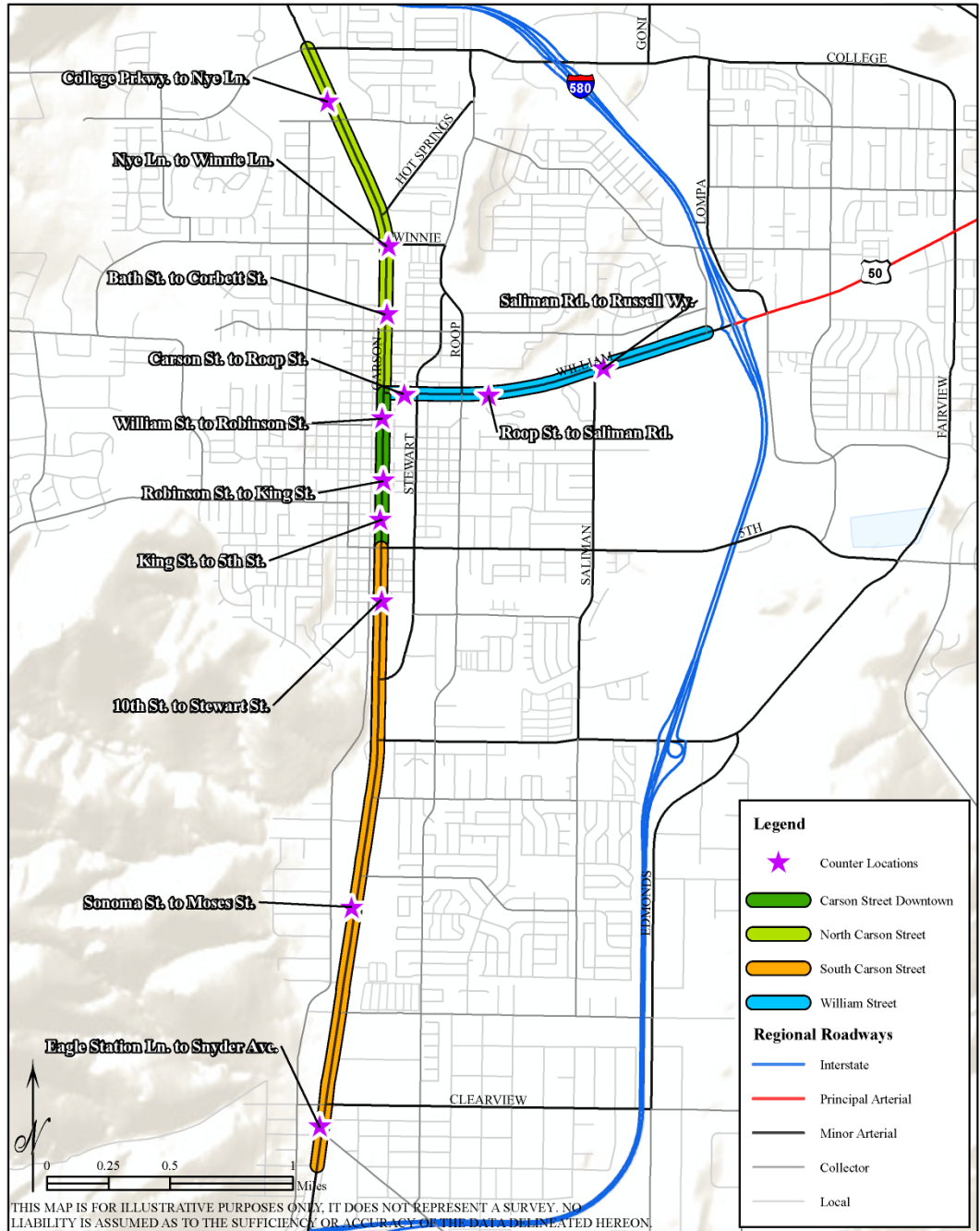
**Table 4.2 Safety Data for CAMPO Planning Area**

| Performance Measure                              | 2012        | 2013        | 2014        | 2015        | 2016        | 2017        |
|--|-------------|-------------|-------------|-------------|-------------|-------------|
| 2018 Baseline                                    |             |             |             |             |             |             |
| 2019 Baseline                                    |             |             |             |             |             |             |
| # of Fatalities                                  | 1.00        | 2.00        | 3.00        | 0.00        | 4.00        | 4.00        |
| # of Serious Injuries                            | 9.00        | 12.00       | 12.00       | 17.00       | 5.00        | 9.00        |
| # of Non-Motorized Fatalities & Serious Injuries | 2.00        | 5.00        | 4.00        | 2.00        | 3.00        | 5.00        |
| Annual Vehicle Miles Traveled (VMT)              | 470,558,752 | 487,520,736 | 487,200,339 | 571,234,641 | 619,768,739 | 677,473,469 |

**Table 4.3 Performance Measure Targets, 2018 and 2019**

| Safety Performance Measures                             | 2018 Target<br>(2012-2016, -0.5%) | 2019 Target<br>(2013-2017, -0.5%) |
|---|-----------------------------------|-----------------------------------|
| Number of Fatalities                                    | 3.53                              | 3.17                              |
| Number of Serious Injuries                              | 9.53                              | 12.66                             |
| Number of Non-Motorized Fatalities and Serious Injuries | 2.73                              | 4.43                              |
| Rate of Fatalities Per 100 Million VMT                  | 0.39                              | 0.43                              |
| Rate of Serious Injuries per 100 Million VMT            | 1.71                              | 1.57                              |

Figure 4.14 - 2017 - 2018 Pedestrian Counter Locations



**Table 4.5: Baseline Pedestrian Volume Data**

| <b>2017 Annual Summary</b>                                     | <b>Downtown</b> | <b>North Carson</b> | <b>South Carson</b> | <b>William Street</b> |
|--|-----------------|---------------------|---------------------|-----------------------|
| 2017 Daily Summer <sup>1</sup> Average                         | 19              | ---                 | 7                   | ---                   |
| 2017 Daily Spring <sup>1,2</sup> / Fall <sup>1,2</sup> Average | 15              | ---                 | 11                  | ---                   |
| 2017 Daily Winter <sup>1</sup> Average                         | 8               | ---                 | 6                   | ---                   |
| 2017 Annual Daily Average                                      | 13              | ---                 | 7                   | ---                   |
| <b>2018 Annual Summary</b>                                     |                 |                     |                     |                       |
| 2018 Daily Summer <sup>1</sup> Average                         | 17              | 28                  | 13                  | 19                    |
| 2018 Daily Spring <sup>1,2</sup> / Fall <sup>1,2</sup> Average | 17              | 10                  | 7                   | 17                    |
| 2018 Daily Winter <sup>1</sup> Average                         | 8               | 12                  | 6                   | 9                     |
| 2018 Annual Daily Average                                      | 12              | 17                  | 8                   | 17                    |
|  |                 |                     |                     |                       |
| % Percent Annual Change  | -7.7%           | N/A                 | 14.3%               | N/A                   |

1. Seasonal months are defined as follows: Summer (May, June, July, August); Spring / Fall (March, April, September, October); Winter (November, December, January, February)

2. Counts representing spring and fall are collected in either season

**Figure 4.13: 2017 & 2018 Average Daily Pedestrian Volume by Corridor**

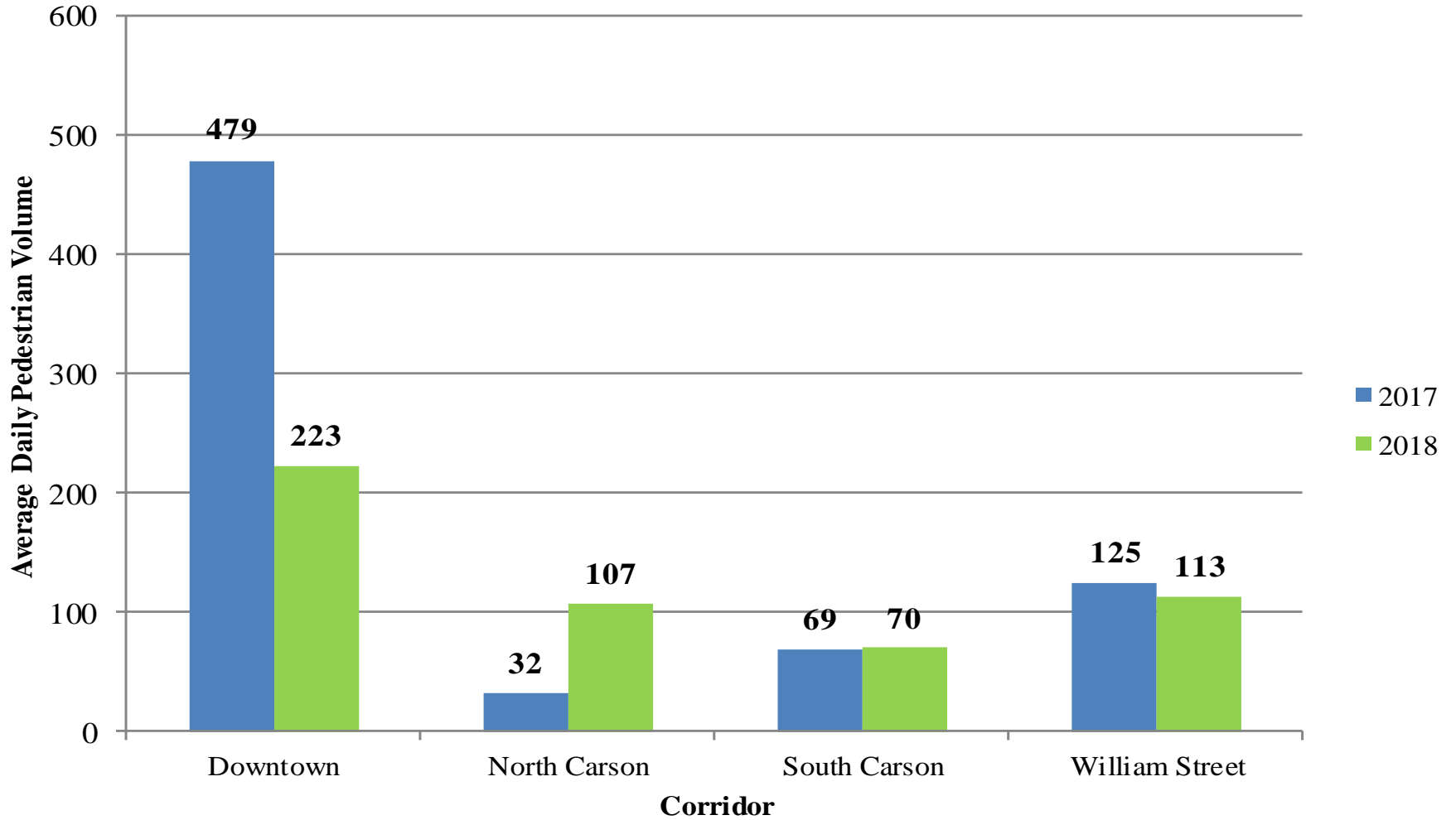
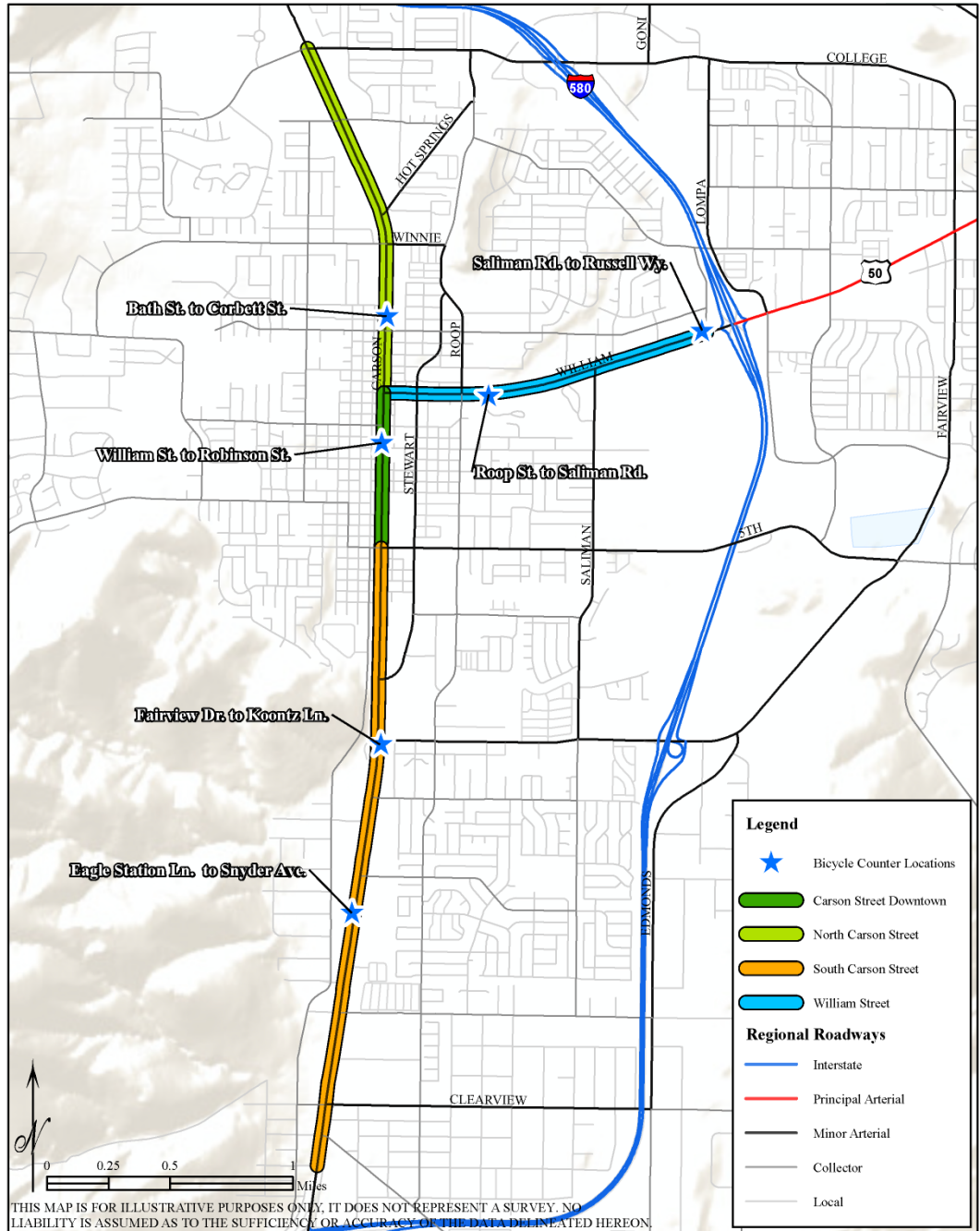


Figure 4.16 - 2017 - 2018 Bicycle Counter Locations



THIS MAP IS FOR ILLUSTRATIVE PURPOSES ONLY. IT DOES NOT REPRESENT A SURVEY. NO LIABILITY IS ASSUMED AS TO THE SUFFICIENCY OR ACCURACY OF THE DATA PRESENTED HEREON.

**Table 4.6: Baseline Bicycle Volumes**

| <b>2017 Annual Summary</b>                                     | <b>Downtown</b> | <b>North Carson</b> | <b>South Carson</b> | <b>William Street</b> |
|--|-----------------|---------------------|---------------------|-----------------------|
| 2017 Daily Summer <sup>1</sup> Average                         | 19              | ---                 | 7                   | ---                   |
| 2017 Daily Spring <sup>1,2</sup> / Fall <sup>1,2</sup> Average | 15              | ---                 | 11                  | ---                   |
| 2017 Daily Winter <sup>1</sup> Average                         | 8               | ---                 | 6                   | ---                   |
| 2017 Annual Daily Average                                      | 13              | ---                 | 7                   | ---                   |
| <b>2018 Annual Summary</b>                                     |                 |                     |                     |                       |
| 2018 Daily Summer <sup>1</sup> Average                         | 17              | 28                  | 13                  | 19                    |
| 2018 Daily Spring <sup>1,2</sup> / Fall <sup>1,2</sup> Average | 17              | 10                  | 7                   | 17                    |
| 2018 Daily Winter <sup>1</sup> Average                         | 8               | 12                  | 6                   | 9                     |
| 2018 Annual Daily Average                                      | 12              | 17                  | 8                   | 17                    |
| % Percent Annual Change  | -7.7%           | N/A                 | 14.3%               | N/A                   |

1. Seasonal months are defined as follows: Summer (May, June, July, August); Spring / Fall (March, April, September, October); Winter (November, December, January, February)

2. Counts representing spring and fall are collected in either season

Figure 4.15: 2017 & 2018 Average Daily Bicycle Volume

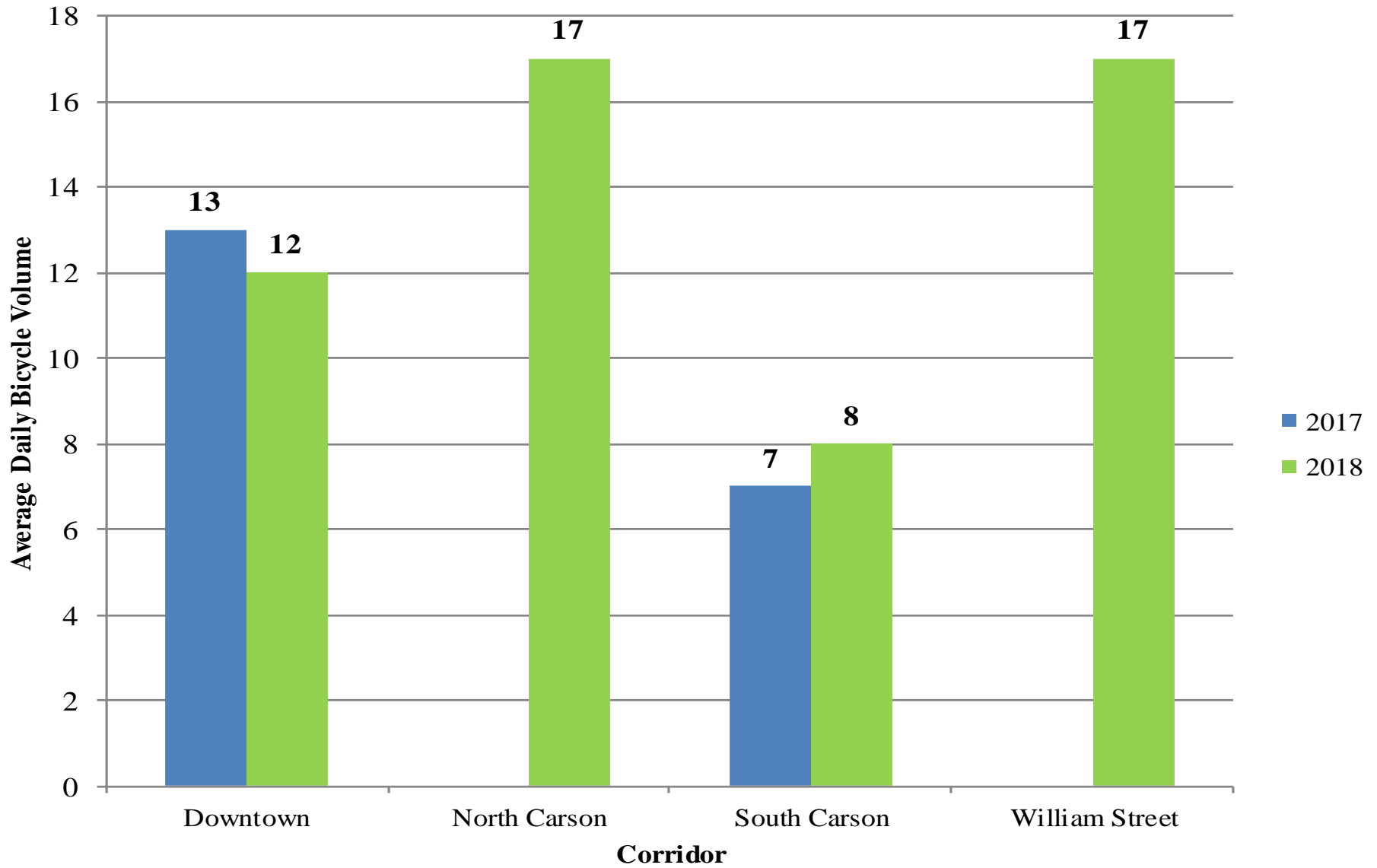
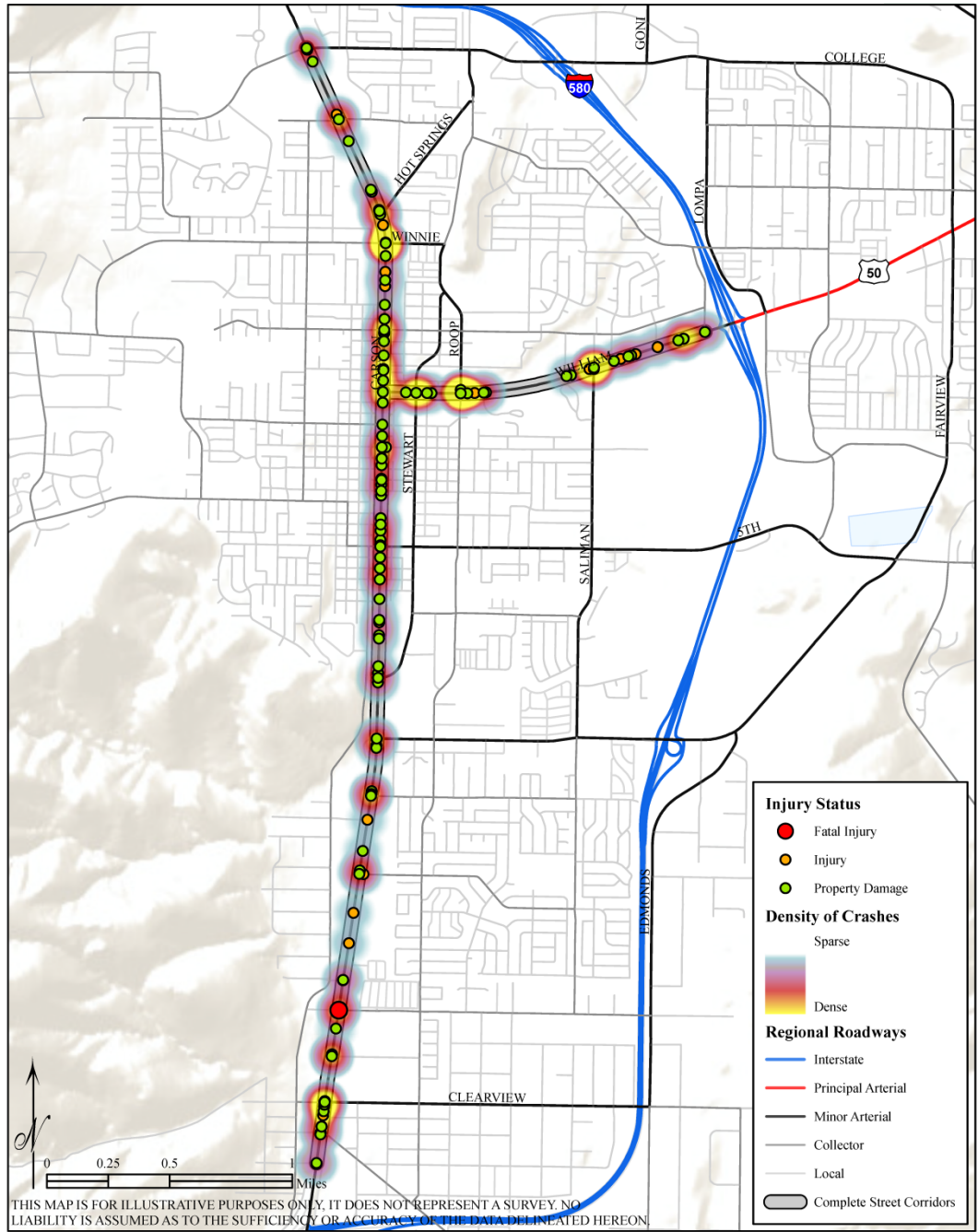


Figure 4.18 - 2017 - 2018 Complete Street Corridors Vehicle Crashes



**Table 4.7: 2017 – 2018 Complete Street Corridor Crash Data**

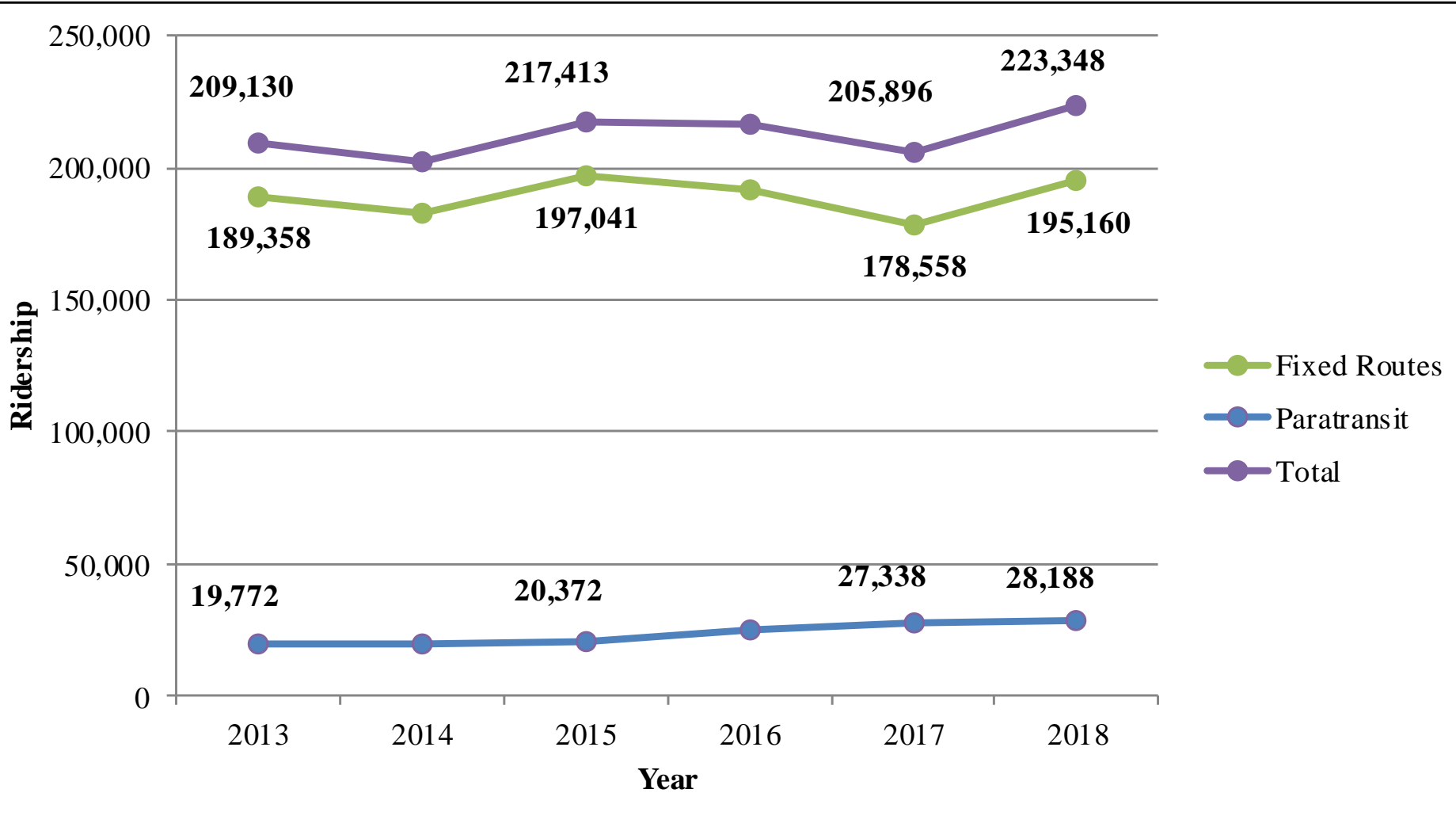
|                                   | <b>Fatal Injury</b> | <b>Injury</b> | <b>Property Damage</b> | <b>Total Crashes</b> | <b>Pedestrian<br/>or<br/>Bicyclist<br/>Involved in Crash</b> |
|-----------------------------------|---------------------|---------------|------------------------|----------------------|--|
| <b>Downtown<sup>1</sup></b>       |                     |               |                        |                      |  |
| 2017                              | 0                   | 3             | 19                     | 22                   | 0  |
| 2018 <sup>2</sup>                 | 0                   | 2             | 3                      | 5                    | 0  |
| % Annual Change                   | N/A                 | -33.3%        | -84.2%                 | -77.3%               | --   |
| <b>North Carson<sup>1</sup></b>   |                     |               |                        |                      |  |
| 2017                              | 0                   | 8             | 32                     | 40                   | 0  |
| 2018 <sup>2</sup>                 | 0                   | 4             | 13                     | 17                   | 0  |
| % Annual Change                   | N/A                 | -50.0%        | -59.4%                 | -57.5%               | --   |
| <b>South Carson<sup>1</sup></b>   |                     |               |                        |                      |  |
| 2017                              | 0                   | 15            | 45                     | 60                   | 0  |
| 2018 <sup>2</sup>                 | 1                   | 5             | 7                      | 13                   | 0  |
| % Annual Change                   | N/A                 | -66.6%        | -84.4%                 | -78.3%               | --   |
| <b>William Street<sup>1</sup></b> |                     |               |                        |                      |  |
| 2017                              | 0                   | 13            | 33                     | 46                   | 1 <sup>3</sup>   |
| 2018 <sup>2</sup>                 | 0                   | 8             | 9                      | 17                   | 1 <sup>3</sup>   |
| % Annual Change                   | N/A                 | -38.5%        | -72.7%                 | -63.0%               | 0%   |

1. Crashes within 100ft buffer of corridor

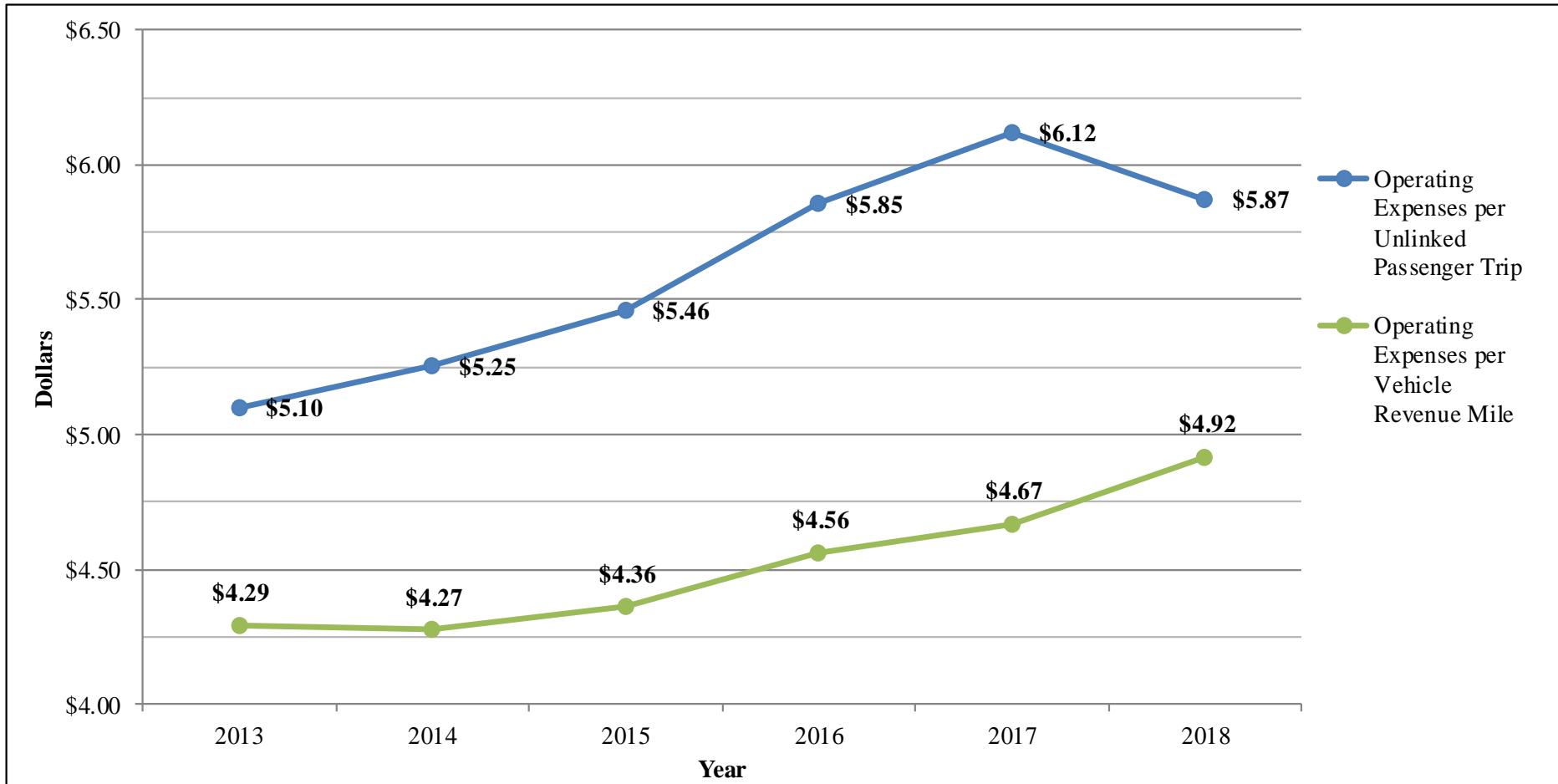
2. Nevada Department of Transportation (NDOT) March 2019, 2018 data is not complete

3. Injury, pedestrian

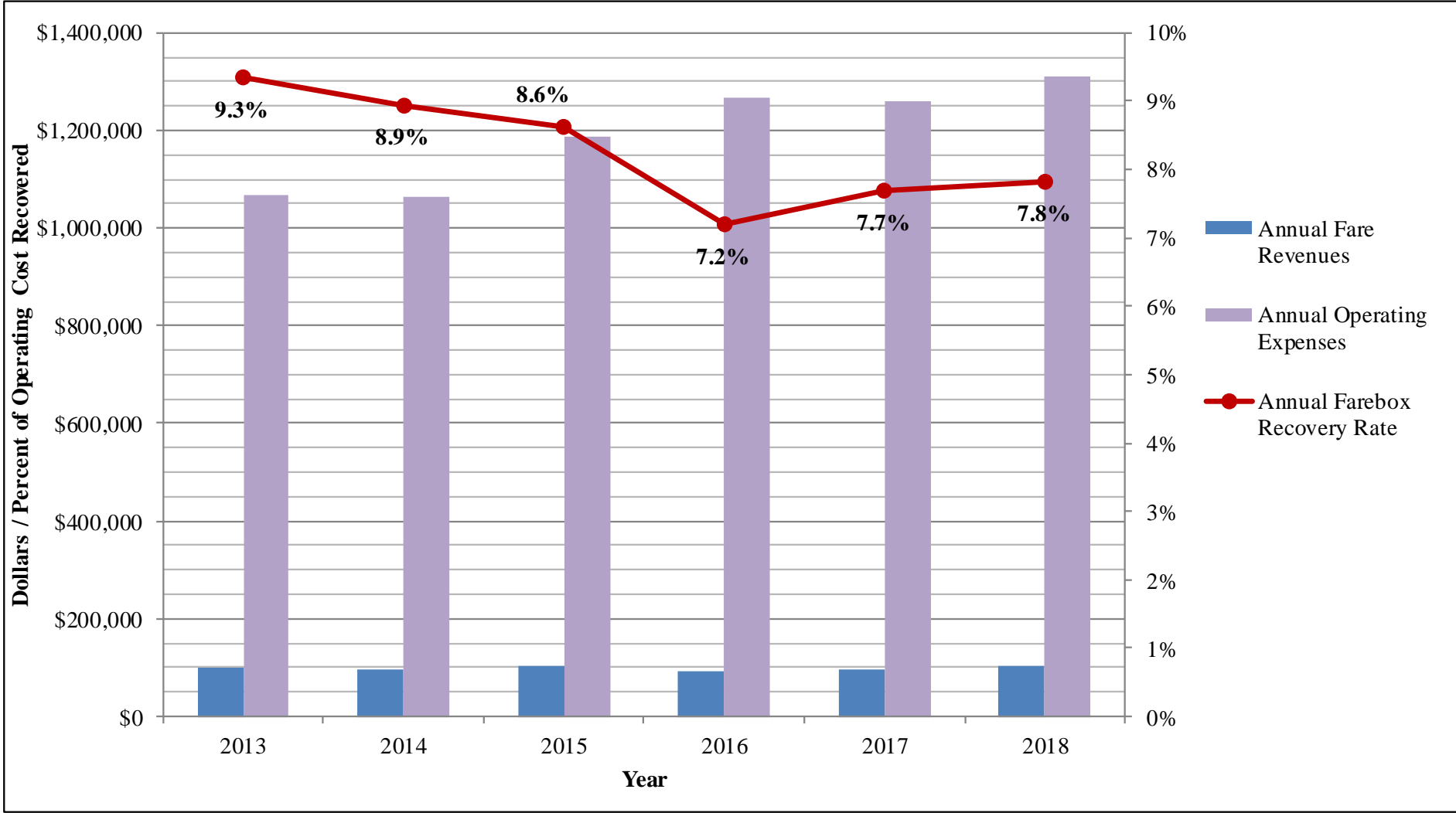
**Figure 4.19 JAC Ridership (FY 2013-FY 2018)**



**Figure 4.22 JAC Operational Efficiency Metrics (FY 2013-FY 2018)**



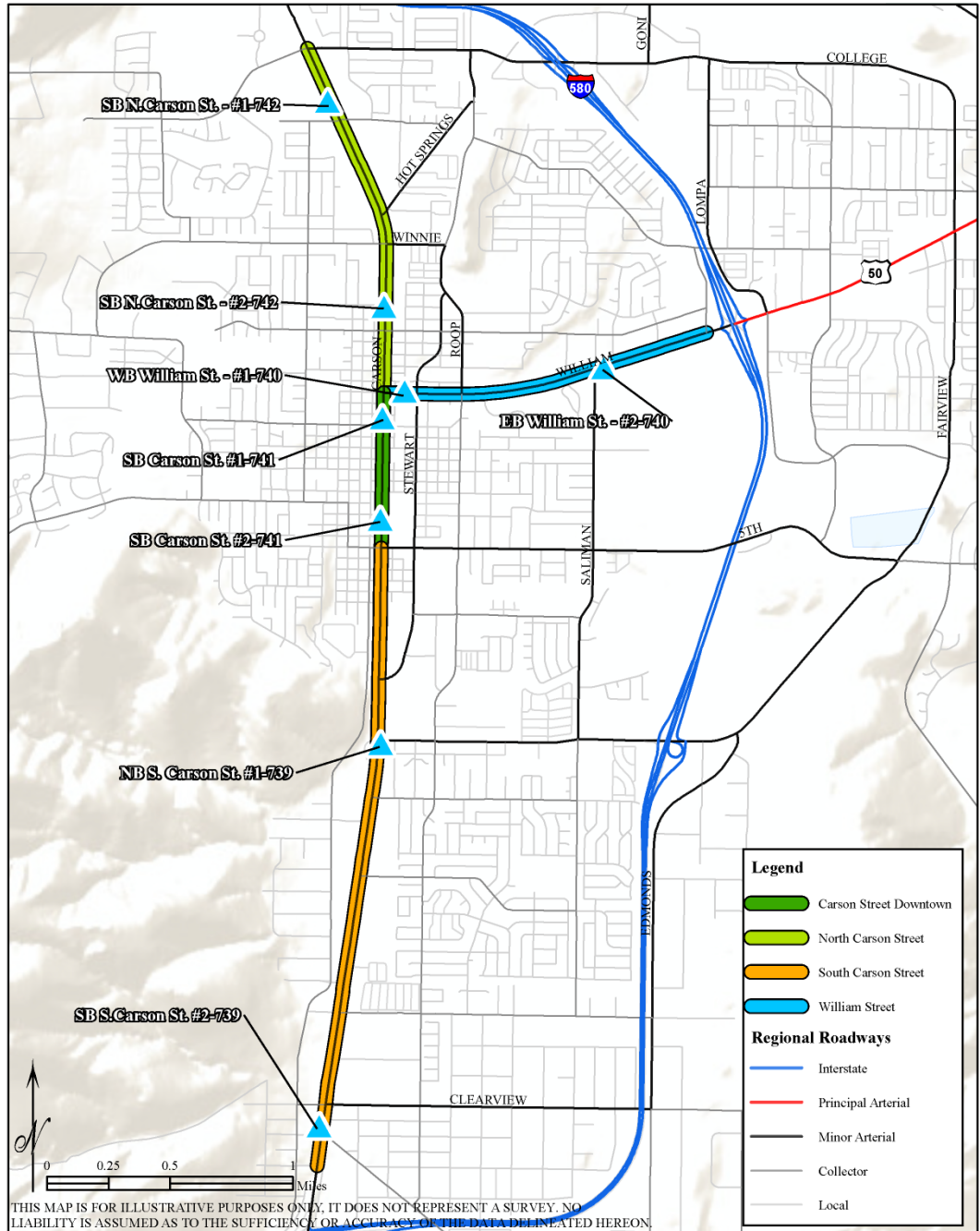
**Figure 4.21 JAC Farebox Recovery Rate (FY 2013-FY 2018)**



# 2020 Monitoring Plan

- **Six Month Pedestrian Counter Rotation**
- **Updated Bicycle Counter Locations**
- **TAM Targets Updated in October**
- **Safety Targets Updated in February**
- **Annual Reporting:**
  - › **Annual American Community Survey Update**
  - › **Volume Data Update**
  - › **Pavement Management Data Update**
  - › **Crash Data Update**
  - › **JAC Ridership and Fares Update**

Figure 5.1 - 2019 Pedestrian Counter Locations



# Questions or Comments



Carson Area

Metropolitan Planning Organization

---

C

A

M

P

O

---