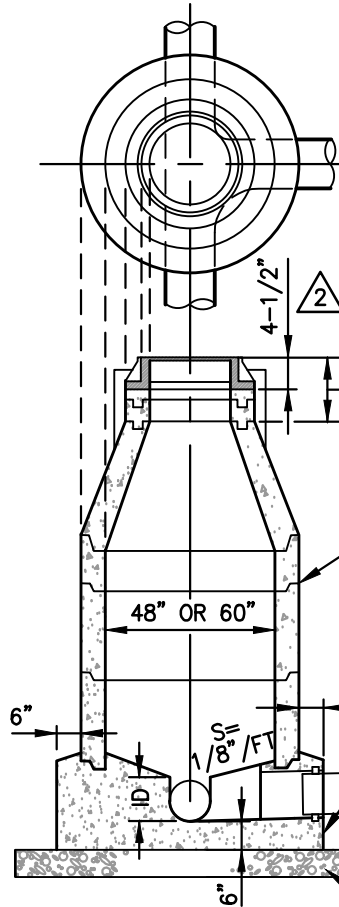


EXPLODED VIEW
NTS



TYPICAL SECTION
NTS

SYM	ITEM
(A)	FRAME & COVER
(B)	PRECAST GRADE ADJUSTING RING
(C)	PRECAST MANHOLE SECTION
(D)	PRECAST BASE SECTION

TAPER HEIGHT	
DIA	H
48"	24" MIN
60"	48" MIN

FINISH GRADE
MANHOLE FRAME &
COVER ADJUSTMENT
(SEE DWG C-2.1.5)

TONGUE AND GROOVE JOINT, SEAL
JOINT W/ FLEXIBLE GASKET MATERIAL
PER PRECAST MANUFACTURERS
RECOMMENDATIONS

BASE SECTION AND SANITARY SEWER
BENCHED CHANNELIZED INVERTS
SHALL BE PRECAST BY THE
MANUFACTURER

COMPACTED CLASS C BACKFILL
(SSPWC 200.03.04), MUST BE
INSPECTED PRIOR TO PLACEMENT
OF MANHOLE BASE

PIPES SHALL NOT PROTRUDE MORE THAN 3"
INSIDE OF MANHOLE SECTION, AS MEASURED
FROM THE INSIDE WALL AT THE SPRINGLINE OF
THE PIPE. SANITARY SEWER MANHOLES SHALL
HAVE WATERTIGHT GASKET (A-LOK X-CEL
CONNECTOR OR APPROVED EQUAL) CAST INTO
BASE SECTION BY PRECAST MANUFACTURER.
INSERT PIPE PER GASKET MANUFACTURES
RECOMMENDATIONS.

FORM INTERSECTING CHANNELS
TO ALLOW SEWER MAINTENANCE
EQUIPMENT TO PASS THRU
MANHOLE

FORM SMOOTH CURVE
IN MANHOLE BASE FOR
INTERSECTING SEWER

BROOM FINISH

SMOOTH FINISH

PLAN VIEW-BASE
NTS

NO.	REVISION	DATE	STANDARD DETAIL FOR PUBLIC WORKS CONSTRUCTION	SECTION
1	REMOVE	1/21	MANHOLE TYPE 1	CARSON CITY
	TRACER WIRE			DRAWING NO. C-2.1.3
2	TYP SECTION	4/25		DATE APR 2025
APPROVED BY: <i>DA</i>			4/25	