



STAFF REPORT

Agenda Item: 5

Report To: Open Space Advisory Committee

Meeting Date: April 19, 2021

Staff Contact: Gregg Berggren, Trails Coordinator, gberrgren@carson.org

Agenda Title: For Discussion Only: Review and discussion regarding Ryan Soulier's Eagle Scout Project for construction of a new trail in Ash Canyon (*Lyndsey Boyer*)

Staff Summary: See below.

Agenda Action: Other/presentation

Time Requested: 10 minutes

Proposed Motion

N/A

Board's Strategic Goal

N/A

Previous Action

N/A

Background/Issues & Analysis

Mr. Ryan Soulier will discuss his Eagle Scout project in Ash Canyon. In his PowerPoint presentation, Ryan will share his project in which he will construct a short trail to connect parking at the Ash Canyon water tanks with single-track trails on the Eagle View Open Space. Trails Coordinator, Gregg Berggren is the staff lead who is assisting with the planning and project implementation. Crew Leads from Muscle Powered, Paul Sinnott and Pete Doenges, are providing technical assistance.

Applicable Statute, Code, Policy, Rule or Regulation

N/A

Financial Information

Is there a fiscal impact? Yes No

If yes, account name/number:

Is it currently budgeted? Yes No

Explanation of Fiscal Impact:

Alternatives

N/A

Board Action Taken:

Motion: _____

1) _____

2) _____

Aye/Nay

(Vote Recorded By)



POTASH TRAIL BUILDING PROJECT

BY RYAN SOULIER

Introduction of Project

- ▶ Construct a new trail to connect parking near the Ash Canyon water tanks with the trail system in lower Ash Canyon, including trails on the Eagle View Open Space, State Lands, WNC, and the Foothill Drive trailhead off Winnie Lane.
- ▶ This trail will also serve as a smooth transition for mountain bikers riding down Ash Canyon Road and it will avoid intersections and traffic on the road.
- ▶ The trail will be constructed on State Lands, and we have permission for the project through a license agreement between Carson City and the Nevada Division of State Lands.

Location

Project is located at Ash Canyon adjacent to the holding pond and water towers.

Legend

- Carson City
- ★ Potash Trail

PARKING

Limited parking. Can fit five vehicles, with parking available elsewhere in the area.

Legend

- 🚗 PARKING
- ★ Potash Trail

Google Earth

©2020 Google

Google Earth

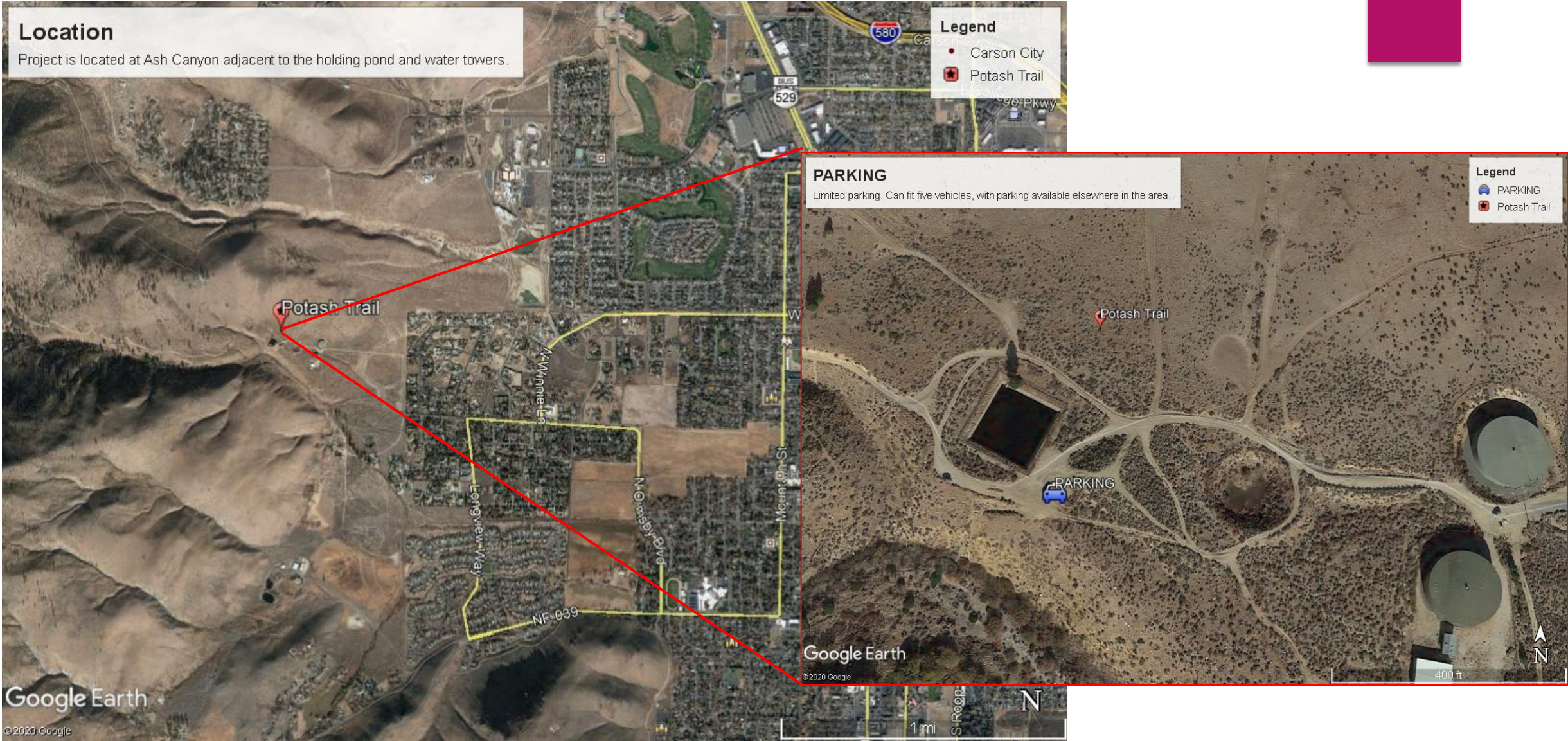
©2020 Google

1 mi

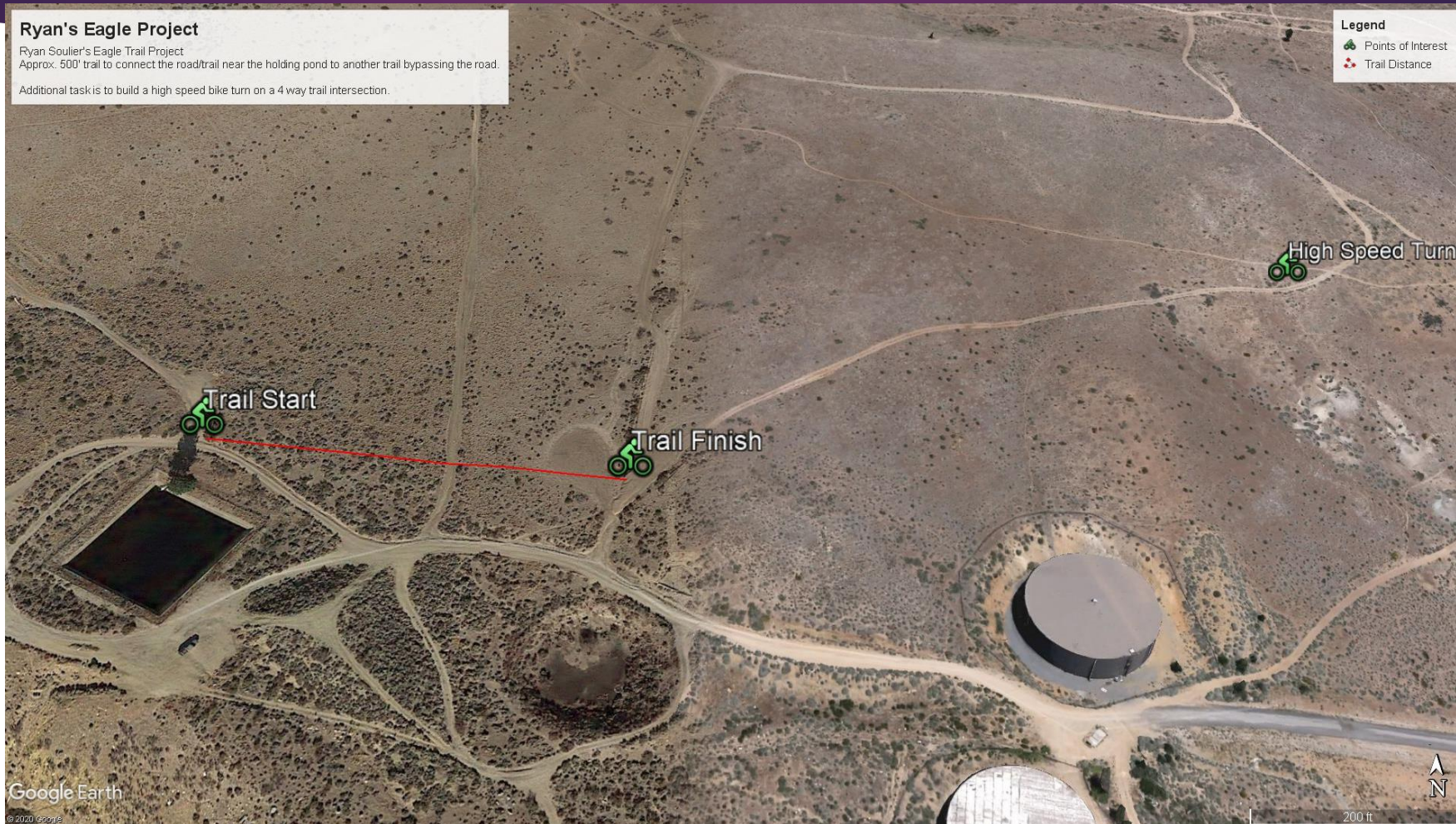
N

400 ft

N



Aerial Photo of Project Area



Benefits of this project

- ▶ This trail will allow for the sustainability of trails with low environmental impact, integrating nature & reducing wear and maintenance
- ▶ It will provide a quality single-track, dirt trail experience with flow to draw mountain bikers, joggers, hikers and equestrians
- ▶ Building this trail will allow teaching by design and attract good trail use while discouraging poorly created social trails and trail abuse
- ▶ This trail will allow an easy transition for mountain bikers without hard turns and difficult terrain

Project Approach

- ▶ Before project day:
 - ▶ Planning – Design a trail to connect Ash Canyon Road with Postal Trail using sustainable grades. The trail will cross a double-track, run across the bottom of a closed dirt parking area, descend into and out of a water drainage rut, and finish out on the upper track of the connector road.
 - ▶ Recruit 15-20 people to help. This number will be within COVID-19 directives as people may be spread-out over 500 yards to maintain social distancing. If needed, I will construct over a couple of weekends.
 - ▶ Flagging – The alignment will be flagged ahead of project day.
- ▶ Project day:
 - ▶ Safety talk, explain project, make work assignments.
 - ▶ Corridor and brush clearing.
 - ▶ Construct trail using full-bench construction for sustainability.
 - ▶ Construct turn at Postal Trail.

Project Proposal Date

▶ April 17th 2021

Tools that will be used.

The list of tools needed are as follows:

- ▶ Saws
- ▶ Axes
- ▶ Grubbing tools like hoes or pic axes
- ▶ Shovels
- ▶ Loppers
- ▶ Pounding tools
- ▶ Hard Hats. These will be provided
- ▶ Tools will be provided by the Carson City Parks, Recreation & Open Space Department and Muscle Powered

Safety Requirements

- ▶ **ALL** participants will need proper PPE for trail building. Closed toed shoes, long sleeve shirt, long pants, eye protection (sun glasses or Rx glasses are ok), and gloves.
- ▶ **ALL** participants should wear sunscreen and a cover (hat)
- ▶ **ALL** participants must have a mask for the safety and project layout meeting
- ▶ **IT IS RECOMMENDED** participants have a buff to wear while digging in the dirt and dust
- ▶ **IT IS RECOMMENDED** participants bring their own FULL water bottle
- ▶ **INSTRUCTION** will be given on proper tool handling and usage

Potential Hazards

- ▶ There have been reports of rattle snakes over the years. None have been seen recently however they are in the area. If seen stay away and report to Crew Leader or an adult. Do not attempt to interact or capture the rattle snake.
- ▶ There may be other wildlife in the area which we will avoid.
- ▶ Heat related injuries. Wear proper clothing and drink hydrating fluids. We will avoid caffeine and energy drinks
- ▶ First aid issues. We will have a medical kit onsite and in plain view for first aid.

Lessons Learned

- ▶ I will be exploring and using the EDGE method and teaching by design in order to discourage poorly done social trails & trail abuse
- ▶ I will learn to follow the natural terrain contours & features with rolling grade reversals to manage user energy outlay
- ▶ I will learn crew leadership that combines teaching, ensuring crew safety, and fostering a sense of trail ownership

Thank You

- ▶ Project coordination: Gregg Berggren, Trails Coordinator, Carson City Parks, Recreation & Open Space Department.
- ▶ Technical advisors: Paul Sinnott and Pete Doenges, Crew Leaders, Muscle Powered.
- ▶ Open Space Advisory Committee and other Department staff.



▶ **QUESTIONS??**

