



STAFF REPORT

Agenda Item: 9A

Report To: Open Space Advisory Committee

Meeting Date: April 18, 2022

Staff Contact: Gregg Berggren, Trails Coordinator, gberggren@carson.org

Agenda Title: For Discussion Only: Trails Coordinator Report - Activities related to trail projects managed by the Open Space Division, including updates on the Capital to Tahoe and Lincoln Bypass trails, Kings Canyon Trailhead, Prison Hill projects, Silver Saddle Ranch kiosk sign and EQ accessibility enhancements, "Share the Trails" messaging, and trail count data.

Staff Summary: See below.

Agenda Action: Other/Presentation

Time Requested: 10 minutes

Capital to Tahoe/Lincoln Bypass Trails

No major updates since the last report. Muscle Powered plans to continue finishing work on the Lincoln Bypass, including adding some riprap to about 100-200 feet of backslope near the connection to Kings Canyon Road where there is some slumping. Work on Capital to Tahoe will resume as conditions improve this spring or summer.

Kings Canyon Trailhead

Work resumed on the Kings Canyon Trailhead project on March 21. The project should be largely completed by the end of April, with perhaps a few minor change-order elements remaining to be completed in May.

New Ash Canyon Road Kiosk Sign

We recently placed a new kiosk sign in Ash Canyon. This new sign gives more information and a better description of Ash Canyon Road. It includes a map, agency contacts, and the link to our website for updates on seasonal closures. It also indicates that Ash Canyon Road is the only motorized option in the Ash Canyon area.



Prison Hill Non-Motorized Trails

Odyssey Trail – Muscle Powered, under the lead of Paul Sinnott, is working hard on Phase I of the Odyssey Trail. This first phase will make a connection from the Koontz Lane TH to the “Saddle” where it will connect with the North Loop. Future phases will connect to Dead Truck Canyon. This trail is designed to be a sustainable replacement to the existing old roads currently used to access the North Loop and Dead Truck Canyon from Koontz Lane.

Desert Peach Trail – We are waiting for funding from a Recreation Trails Program Grant to build this sustainable connection from the 5th Street Loop Trails to the North Loop. Funding should be released in the next few weeks.



Amazing views for volunteers working on the Odyssey Trail!

Muscle Powered trail crew.



Silver Saddle Ranch History Panel

We recently added a panel to the Silver Saddle Ranch kiosk which gives a timeline history of the property. The artwork was created by our Recreation Intern, Kaylee Maples, last summer and the layout was created by Ranger Tyler Kerver.



A brief history of

SILVER SADDLE RANCH

- 1 The Red House**
Originally built by Jean Ellisondaberry in 1917. Expansions were added by following owners.
- 2 The Farmer's House**
Built by Herlox family to house ranch hands.
- 3 Hay Barn**
Built by Merchant family.
- 4 Lambing Shed**
Built by Herlox family to house lambs during cold and/or wet weather.
- 5 Equipment Shed**
Built by Merchant family.
- 6 Root Cellar**
Built by Herlox family.
- 7 Chicken Coop**
Built by Herlox family.
- 8 Bunk House**
Built by Herlox family.
- 9 Loading Chutes**
Built by Merchant family to load and unload large amount of livestock.
- 10 Livestock Holding**
Built by Merchant family.

1860

Mexican Ditch, Dam, and Mill are built to support the Mexican Mine in Virginia City. The ditch runs through five miles of agricultural land.

1917

Jean Ellisondaberry ranches for the first time in an area that is now Silver Saddle Ranch. He builds the Red House and establishes the area for ranching and Basque Sheepherding.

1932

Ellisondaberry is forced to sell to Alfred Chartz due to back taxes resulting from the Great Depression.

1946

Herlox family acquires 400 acres of the future Silver Saddle Ranch property. They build several structures for a larger ranching operation as well as additions to the Red House.

1956

Merchant family acquires all 700 acres and renames the property to Silver Saddle Ranch. They build more structures and commercially ranch cattle and sheep.

1997

The surviving Merchant family, along with Friends of Silver Saddle Ranch, assist in process of transferring the property to the BLM.

2015

Silver Saddle Ranch and Prison Hill conveyed to Carson City, managed by the Open Space Division.

2020

New Carson River Trail System connects Silver Saddle Ranch to the rest of Carson City!

Equestrian Enhancements at Silver Saddle Ranch

Three gates have been replaced at Silver Saddle Ranch, and four equestrian-friendly latches have been installed on gates. These enhancements will provide easier equestrian access along trails throughout the ranch. Additionally, we placed mounting blocks at the Silver Saddle Ranch parking area and the EQ access gate at Riverview Park.



Share the Trails messaging

Continuing our Share the Trails messaging, we have started to place the Trail Courtesy symbol below some trail wayfinding signs. This new sign includes a QR code link to our Share the Trails video. A Share the Trails brochure is in the works.



Trail Counts

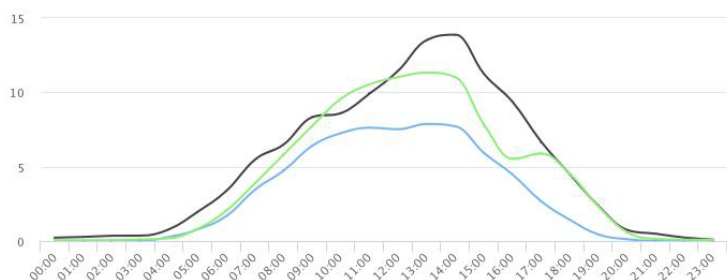
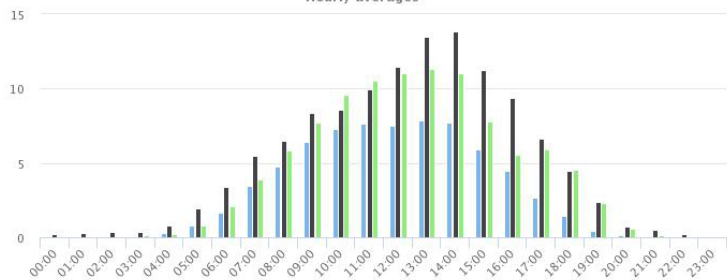
Below is trail count data from three trails in our Carson River Trail System: Buzzy's Ranch Trail, Prison Hill Trail East, and the Mexican Ditch Trail where it crosses the Silver Saddle Ranch bridge.

These counts document the number of times a pedestrian, bicycle, or equestrian passes in front of the counter. Several anomalies (unusually high counts) were removed from the Prison Hill Trail East data. Spikes in SSR data were accounted for by documented events, so all of that data was retained. The Buzzy's Ranch Trail data showed no significant variations.

Year	Site	Jan	Feb	Mar	Apr	May	Jun	Jul	Aug	Sep	Oct	Nov	Dec	ADT	Annual
2020	Buzzys Tr. - S End											3,120	1,901	68	24,977
	PH Trail E - 5th St											4,397	2,789	100	36,744
	SSR Bridge											2,760	2,637	86	31,545
2021	Buzzys Tr. - S End	2,717	2,192	2,529	2,932	2,940	2,087	1,666	1,344	1,976	2,040	2,039	910	70	25,372
	PH Trail E - 5th St	3,210	3,181	4,920	4,254	4,017	3,265	4,411	3,143	3,526	4,643	3,413	2,428	122	44,389
	SSR Bridge	3,143	2,973	3,774	3,688	3,290	1,988	1,705	1,875	1,951	3,598	3,168	7,066	105	38,219
2022	Buzzys Tr. - S End	2,208	2,393	2,201										78	28,421
	PH Trail E - 5th St	3,658	4,000	4,929										130	47,551
	SSR Bridge	2,468	2,739	3,379										89	32,339

Hours of the day

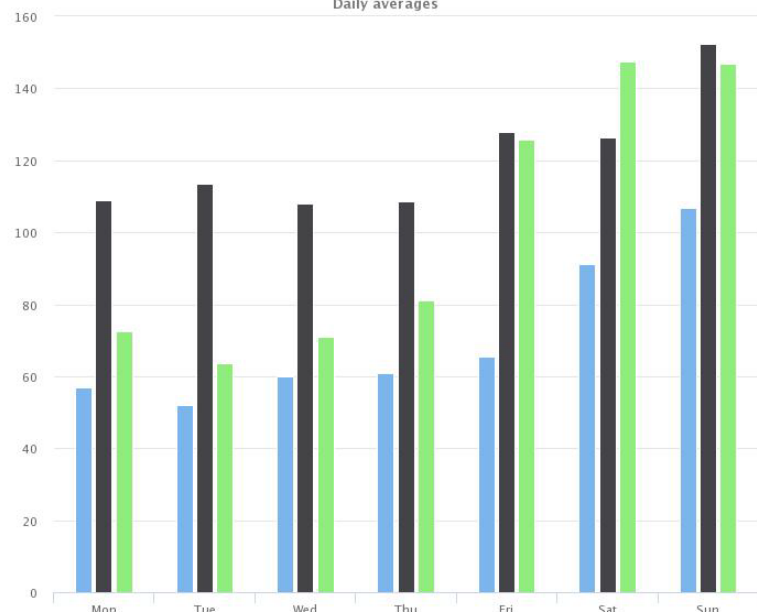
2020-11-21 to 2022-03-01
Hourly averages



Site Name	Average	Median	STDV	Min	Max
Buzzys Tr. - S End	2.9	1.6	3.1	0.0	7.9
PH Trail E - 5th St	5.0	3.9	4.6	0.1	13.9
SSR Bridge	4.2	3.1	4.2	0.0	11.3

Days of the week

2020-11-21 to 2022-03-01
Daily averages



Site Name	Average	Median	STDV	Min	Max
Buzzys Tr. - S End	70.5	61.0	18.9	51.9	106.7
PH Trail E - 5th St	120.8	113.5	15.1	108.1	152.3
SSR Bridge	101.1	81.0	34.6	63.6	147.3