



# STAFF REPORT

## Agenda Item: 5.A

**Report To:** Open Space Advisory Committee

**Meeting Date:** October 17, 2022

**Staff Contact:** Gregg Berggren, Trails Coordinator, [gberrggren@carson.org](mailto:gberrggren@carson.org)

**Agenda Title:** For Discussion Only: Review and discussion regarding Christopher Collins Eagle Scout Project to produce and place wayfinding signage in the Carson River Canyon. (*Gregg Berggren*)

**Staff Summary:** Mr. Christopher Collins will discuss his Eagle Scout Project in the Carson River Canyon Open Space. Christopher expressed to staff his interest in helping our department produce and place wayfinding signage. His PowerPoint presentation will share his proposal to place signage which will not only provide for wayfinding but will also help identify key locations for emergency services in this remote area. Trails Coordinator Gregg Berggren and Park Ranger Tyler Kerver are the staff leads who are assisting with planning and project implementation.

**Agenda Action:** Other/Presentation

**Time Requested:** 10 minutes

---

**Proposed Motion** N/A

**Board's Strategic Goal**  
N/A

**Previous Action** N/A

**Background/Issues & Analysis** N/A

**Applicable Statute, Code, Policy, Rule or Regulation** N/A

**Financial Information**

Is there a fiscal impact? ☐ Yes ☒ No

# Carson River Canyon Open Space Waypoint Signage

**Christopher Collins**

Eagle Project  
2022

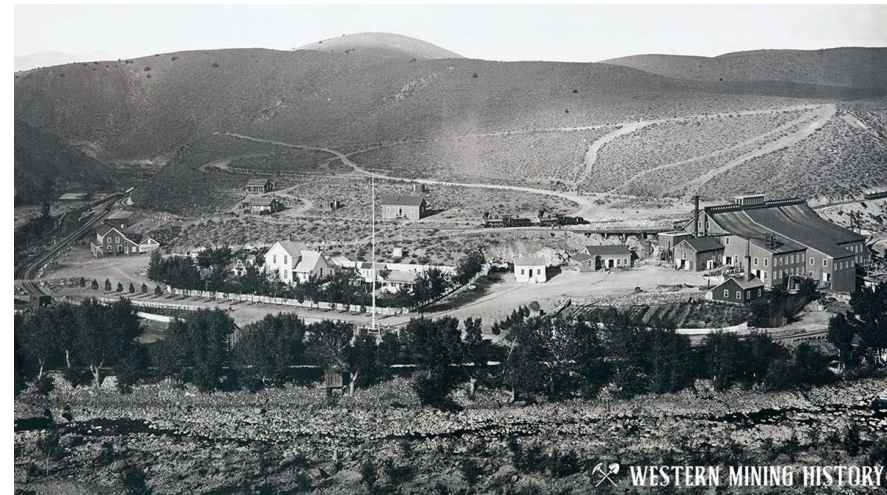
# What Will we be Doing?

For my Eagle Project, I will be installing 5 signs in the Carson River Canyon that provide points of interest location and distances. I will also be providing coordinates for the points of interest and other key positions to help emergency services.

I will be responsible for acquiring all supplies and materials needed to install these new signs, including the signs themselves. I will lead the Troop to install them in the locations desired by the Carson City Parks, Recreation & Open Space Department.

# Where are we Installing the new Signs?

The area where we will be installing these new signs is called the Carson River Canyon. This area has lots of history and was a very significant place back in the 1800's. There used to be multiple mills along this river in the canyon and there was also a smelter for metals, all of which were large producers.



# History of the Area

There were 6 mills located along the river, and one smelter and mill located a little bit off of the river.

- Morgan Mill
- Brunswick Mill
- Merrimac Mill
- Copper Canyon Mill
- Western Smelter (Off River)
- Vivian Mill
- Santiago Mill
- Eureka Mill (Off River)

# Historical Significance

In 1859, the first ore was shipped from the Comstock, Mexican and Ophir Mines. There were no local mills so the ore was shipped over the Sierra Nevada Mountains to California.

In 1860, the first mill was built in Carson. After that, the Carson River Canyon, because of its location and access to water, became a hotspot for activity as several other mills were constructed. Mule driven wagons flowed from the Comstock mines to the mills until 1869. In 1869 the mules wagons were replaced by the newly constructed Virginia and Truckee Railroad.

# Historical Significance

In 1871, many of the mills were enlarged for the increased production of the mines until 1875. These mills included the Merrimack Mill, Copper Canyon Mill, and Vivian Mill. These were all stamp mills which crushed material by pounding for extracting ore.

In 1878, productions of the mines slowed and the mills began to close.



# Location Map





# Safety

- Adults will operate big equipment, power tools and supervise.
- Volunteers will use gloves and safety glasses.
- Volunteers should wear sturdy boots.
- Volunteers can respectfully use hand tools.
- Volunteers will use the buddy system and stay safe (away from the edge of the trail).
- All work will be done using the E.D.G.E. Method.
  - Explain
  - Demonstrate
  - Guide
  - Enable
- Water, snacks and food will be provided.

# Merrimac Mill

## Merrimac Mill Day Use Area

**Copper Canyon Day Use Area** 0.1 mi 

**Western Smelter Day Use Area 0.1 mi** 

**Vivian Dam Day Use Area** 0.4 mi 

**Santiago Mill Day Use Area** 1.6 mi 

**Eureka Mill Day Use Area** 2.3 mi 

## Campfires and overnight use prohibited

[illegible]

The map shows a winding road through a canyon. At the top, a red arrow points right towards 'Copper Canyon Day Use Area'. At the bottom, a red arrow points left towards 'Western Smelter Day Use Area'. Along the road, four day use areas are marked with red arrows and distances: Merrimac Mill Day Use Area (0.1 mi, red arrow pointing down), Vivian Dam Day Use Area (0.3 mi, red arrow pointing up), Santiago Mill Day Use Area (1.5 mi, red arrow pointing up), and Eureka Mill Day Use Area (2.2 mi, red arrow pointing up). A red banner at the bottom states 'Campfires and overnight use prohibited'.

Day Use Area	Distance
Merrimac Mill Day Use Area	0.1 mi
Vivian Dam Day Use Area	0.3 mi
Santiago Mill Day Use Area	1.5 mi
Eureka Mill Day Use Area	2.2 mi

# Vivian Dam

# Vivian Dam Day Use Area

**Copper Canyon Day Use Area** 0.3 mi

## Western Smelter Day Use Area 0.3 mi

**Merrimac Dam Day Use Area** 0.4 mi

**Santiago Mill Day Use Area** 1.3 mi

**Eureka Mill Day Use Area** 2.0 mi

## Campfires and overnight use prohibited



Project by  
Troop 33




Carson River Canyon Open Space (CRCOS)			
BSA Troop 33, Chris Collins Eagle Scout Project, CRCOS Waypoint Signage			
Weighpoint Information			
Weighpoint	Decimal Coord	Degrees/Minutes/Seconds Coord	Sign
Vivian Dam (VD)	39.17666, -119.67206	39° 10' 35.98" N, 119° 40' 19.42" W	Yes
Pre-project pictures:			
			

## Santiago Mill Day Use Area →

---

Vivian Dam Day Use Area	1.3 mi	↓
Copper Canyon Day Use Area	1.5 mi	↓
Western Smelter Day Use Area	1.5 mi	↓
Merrimac Mill Day Use Area	1.6 mi	↓
Eureka Mill Day Use Area	0.7 mi	↖

Campfires and overnight use prohibited

Carson River Canyon Open Space (CRCOS)			
BSA Troop 33, Chris Collins Eagle Scout Project, CRCOS Waypoint Signage			
Weighpoint Information			
Weighpoint	Decimal Coord	Degrees/Minutes/Seconds Coord	Sign
Santiago Mill (SM)	39.18455, -119.66046	39° 11' 04.38" N, 119° 39' 37.66" W	Yes
Pre-project pictures:			
			

# Eureka Mill

## Eureka Mill Day Use Area



Santiago Mill Day Use Area	0.7 mi	↓
Vivian Dam Day Use Area	2.0 mi	↓
Copper Canyon Day Use Area	2.2 mi	↓
Western Smelter Day Use Area	2.2 mi	↓
Merrimac Mill Day Use Area	2. mi	↓

Campfires and overnight use prohibited



Project by  
Troop 33



### Carson River Canyon Open Space (CRCOS) BSA Troop 33, Chris Collins Eagle Scout Project, CRCOS Waypoint Signage

#### Waypoint Information

Waypoint	Decimal Coord	Degrees/Minutes/Seconds Coord	Sign
Tracks End / Eureka Mill (TE)	39.19417, -119.66202	30° 11' 39.01" N, 119° 39' 43.27" W	Yes

Pre-project pictures:





# Credits

- Gregg Berggren
  - Carson City Trails Coordinator
- Tyler Kerver
  - Carson City Park Ranger
- Daniel Webster
  - Eagle Scout Coordinator
- Sign Shop
- BSA Troop 33
  - Minden, NV

# Carson River Canyon Open Space Waypoint Signage

**Thank you!**

**Questions???**