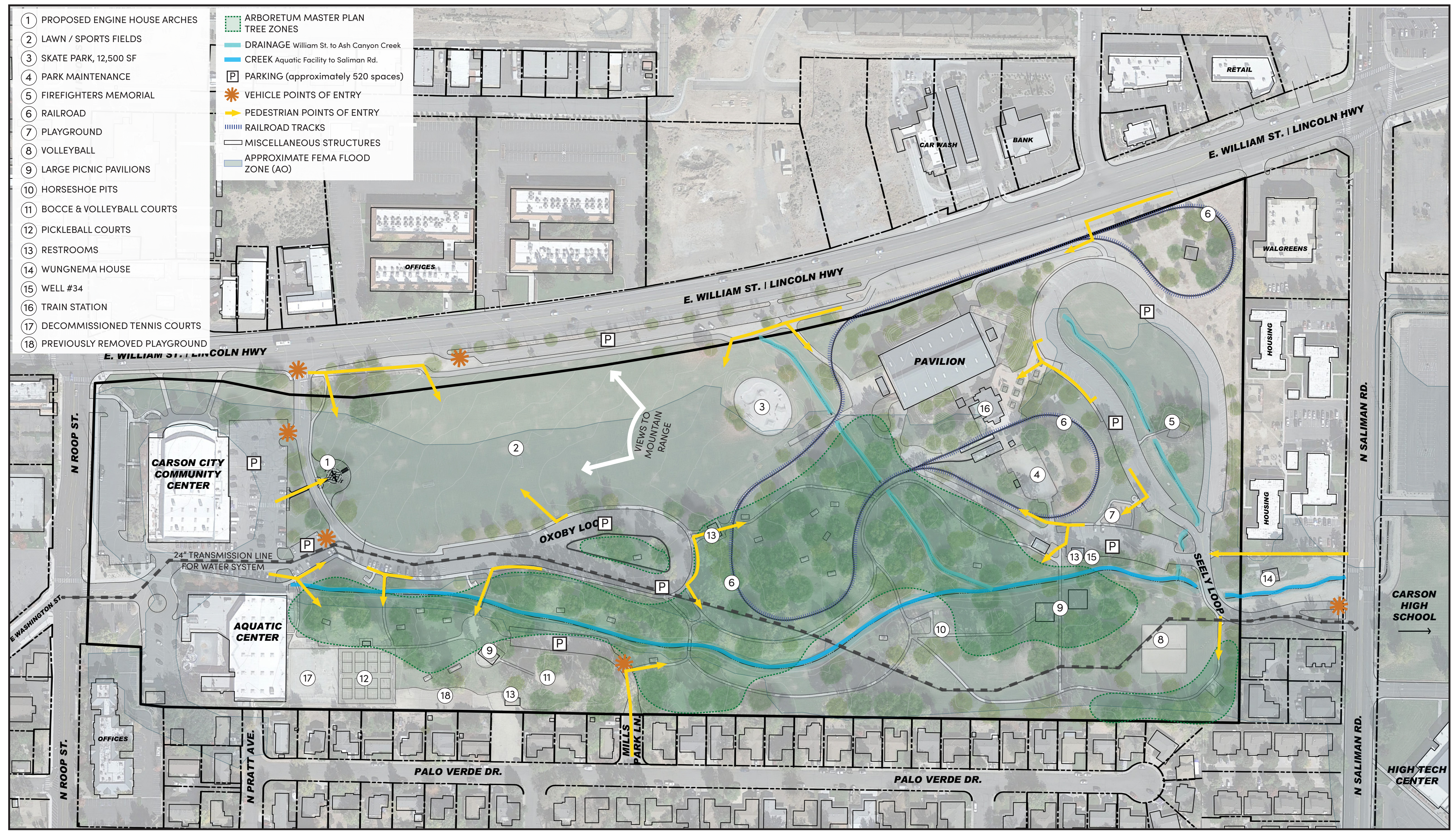


- ① PROPOSED ENGINE HOUSE ARCHES
- ② LAWN / SPORTS FIELDS
- ③ SKATE PARK, 12,500 SF
- ④ PARK MAINTENANCE
- ⑤ FIREFIGHTERS MEMORIAL
- ⑥ RAILROAD
- ⑦ PLAYGROUND
- ⑧ VOLLEYBALL
- ⑨ LARGE PICNIC PAVILIONS
- ⑩ HORSESHOE PITS
- ⑪ BOCCE & VOLLEYBALL COURTS
- ⑫ PICKLEBALL COURTS
- ⑬ RESTROOMS
- ⑭ WUNGNEMA HOUSE
- ⑮ WELL #34
- ⑯ TRAIN STATION
- ⑰ DECOMMISSIONED TENNIS COURTS
- ⑱ PREVIOUSLY REMOVED PLAYGROUND

- ARBORETUM MASTER PLAN TREE ZONES
- DRAINAGE William St. to Ash Canyon Creek
- CREEK Aquatic Facility to Saliman Rd.
- PARKING (approximately 520 spaces)
- VEHICLE POINTS OF ENTRY
- PEDESTRIAN POINTS OF ENTRY
- RAILROAD TRACKS
- MISCELLANEOUS STRUCTURES
- APPROXIMATE FEMA FLOOD ZONE (AO)



- PARK IMPROVEMENTS & ADDITIONS COMMON TO BOTH OPTIONS:**
- THROUGHOUT PARK
 - SIGNAGE & WAYFINDING IMPROVEMENTS
 - IMPROVE SHELTERS AND PICNIC TABLES
 - 1 REPLACE OR UPDATE RESTROOMS
 - 2 FENCING ALONG E. WILLIAM ST. AND AROUND SHOP
 - 3 E. WILLIAM ST. STREETSCAPE IMPROVEMENTS
 - 4 INCREASE PARKING (A: 290 SPOTS)
 - 5 EXPAND SIZE OF VETERANS MEMORIAL
 - 6 RELOCATE BOCCE COURTS
 - 7 REDUCE TO 6 HORSESHOE COURTS
 - 8 KEEP EXISTING PAVILIONS
 - 9 ADD ACCESS ROAD FROM OXOBY LOOP TO MARV TEIXERIA PAVILION
 - 10 ENGINE HOUSE ARCHES
 - 11 OPEN LANDSCAPE AND PLANTING
 - 12 RE-PURPOSE AMPHITHEATER
 - 13 ADD 3,000 SF SHOP AND IMPROVE PLANTING
 - 14 VEGETATION BUFFER ALONG EDGE OF PARK

- OPTION A: PARK IMPROVEMENTS & ADDITIONS**
- 15 24 PICKLEBALL COURTS LOCATED ON SW SIDE OF THE CURRENT OPEN LAWN
 - 16 25,000 SF SKATE PARK AT CURRENT SKATE PARK LOCATION (DOUBLED IN SIZE)
 - 17 3/4 ACRE DOG PARK LOCATED NORTH OF THE AMPHITHEATER
 - 18 FITNESS LOOP 1 & 2 WITH (5) EXERCISE STATIONS AROUND LOOPS
 - 19 14,000 SF PLAYGROUND LOCATED AT THE END OF OXOBY LOOP
 - 20 CONCESSION PLAZA WITH RESTROOM LOCATED LEFT OF MILLS PARK LN. PARKING LOT & ADD OUTDOOR SHOWERS
 - 21 13,000 SF SPLASH PARK LOCATED ADJACENT TO THE EXISTING AQUATIC CENTER
 - 22 2-WAY PUBLIC VEHICLE ACCESS ROAD WITH PARALLEL PARKING CONNECTING OXOBY LOOP TO SEELY LOOP

- DRAINAGE William St. to Ash Canyon Creek
- CREEK Aquatic Facility to Saliman Rd.
- P** PARKING
- ||||| RAILROAD
- PLANNED PARK IMPROVEMENTS & ADDITIONS





- PARK IMPROVEMENTS & ADDITIONS COMMON TO BOTH OPTIONS:**
- THROUGHOUT PARK
 - SIGNAGE & WAYFINDING IMPROVEMENTS
 - IMPROVE SHELTERS AND PICNIC TABLES
 - 1 REPLACE OR UPDATE RESTROOMS
 - 2 FENCING ALONG E. WILLIAM ST. AND AROUND SHOP
 - 3 E. WILLIAM ST. STREETScape IMPROVEMENTS
 - 4 INCREASE PARKING (B: 170 SPOTS)
 - 5 EXPAND SIZE OF VETERANS MEMORIAL
 - 6 RELOCATE BOCCE COURTS
 - 7 REDUCE TO 6 HORSESHOE COURTS
 - 8 KEEP EXISTING PAVILIONS
 - 9 ADD ACCESS ROAD FROM OXOBY LOOP TO MARV TEIXERIA PAVILION
 - 10 ENGINE HOUSE ARCHES
 - 11 OPEN LANDSCAPE AND PLANTING
 - 12 REMOVE AMPHITHEATER
 - 13 ADD 3,000 SF SHOP AND IMPROVE PLANTING
 - 14 VEGETATION BUFFER ALONG EDGE OF PARK

- OPTION B: PARK IMPROVEMENTS & ADDITIONS**
- 15 35,000 SF SKATE PARK AT CURRENT SKATE PARK LOCATION (MORE THAN DOUBLED IN SIZE)
 - 16 24 PICKLEBALL COURTS LOCATED IN THE CENTER OF SEELY LOOP
 - 17 3/4 ACRE DOG PARK LOCATED SOUTH OF SEELY LOOP
 - 18 CENTRALIZED FITNESS STATION LOCATED WEST OF MILLS PARK LANE
 - 19 14,000 SF PLAYGROUND LOCATED ADJACENT TO SEELY LOOP
 - 20 CONCESSION PLAZA WITH RESTROOM LOCATED TO THE RIGHT OF THE SPLASH PARK & ADD OUTDOOR SHOWERS
 - 21 16,000 SF SPLASH PARK LOCATED ADJACENT TO THE EXISTING AQUATIC CENTER
 - 22 VOLLEYBALL COURT LOCATED SOUTH OF OXOBY LOOP

- DRAINAGE William St. to Ash Canyon Creek
- CREEK Aquatic Facility to Saliman Rd.
- P** PARKING
- ▬▬▬▬ RAILROAD
- ▭ PLANNED PARK IMPROVEMENTS & ADDITIONS