



STAFF REPORT

Agenda Item: 5.A

Report To: Open Space Advisory Committee

Meeting Date: February 21, 2023

Staff Contact: Gregg Berggren, Trails Coordinator, gberggren@carson.org

Agenda Title: For Discussion Only: Review and discussion regarding Chris Borges's Eagle Scout Project to realign a segment of trail on Prison Hill. (Gregg Berggren, gberggren@carson.org)

Staff Summary: Mr. Chris Borges will discuss his Eagle Scout Project at the Prison Hill Recreation Area. Chris recently expressed to staff his interest in helping with a trail project. His PowerPoint presentation will share his proposal to reroute a steep segment of existing trail to make it more sustainable and user-friendly.

Agenda Action: Other/Presentation

Time Requested: 10 minutes

Proposed Motion

N/A

Board's Strategic Goal

Quality of Life

Previous Action

N/A

Background/Issues & Analysis

Mr. Chris Borges will discuss his Eagle Scout Project at the Prison Hill Recreation Area that will reroute a steep segment of existing trail to make it more sustainable and user-friendly. Trails Coordinator Gregg Berggren is the staff lead who is assisting with planning and project implementation.


EXHIBIT A – Prison Hill Express Trail Presentation

Applicable Statute, Code, Policy, Rule or Regulation

N/A

Financial Information

Is there a fiscal impact? ☐ Yes ☒ No



Prison Hill Express Trail Re-Route Eagle Scout Project

Chris Borges

Troop 341

Project Partners

Carson City Parks, Recreation & Open Space Dept.

- – Gregg Berggren, Trails Coordinator.

Muscle Powered

- – Paul Sinnott, Technical Advisor.

Troop 341

Project Proposal

- To Re-route a segment of an existing trail on the west side of Prison Hill.

Why?

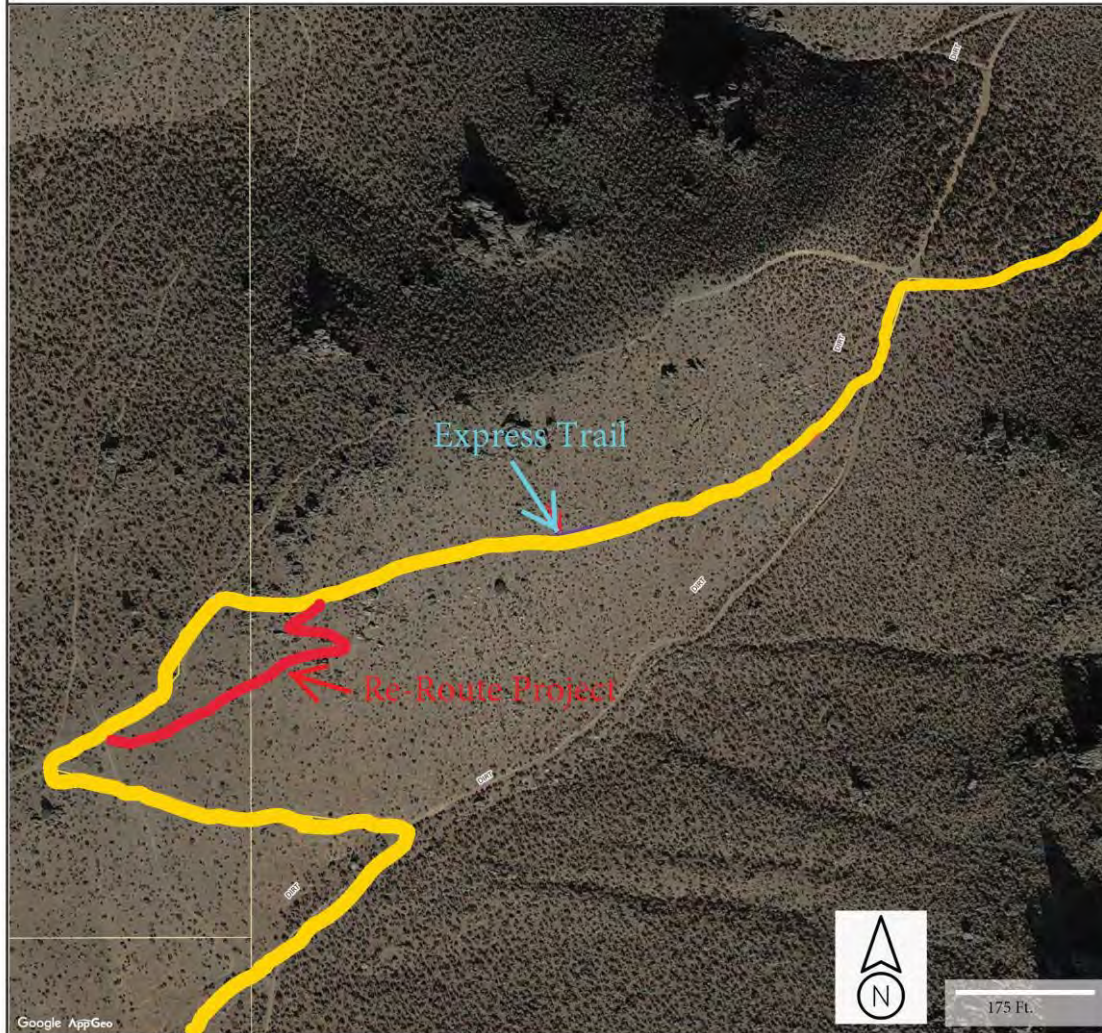
The existing trail segment is steep(it is a 'fall line trail'), and it is eroding

Location Map -- Express Trail Re-Route



Express Trail Re-Route Project Location

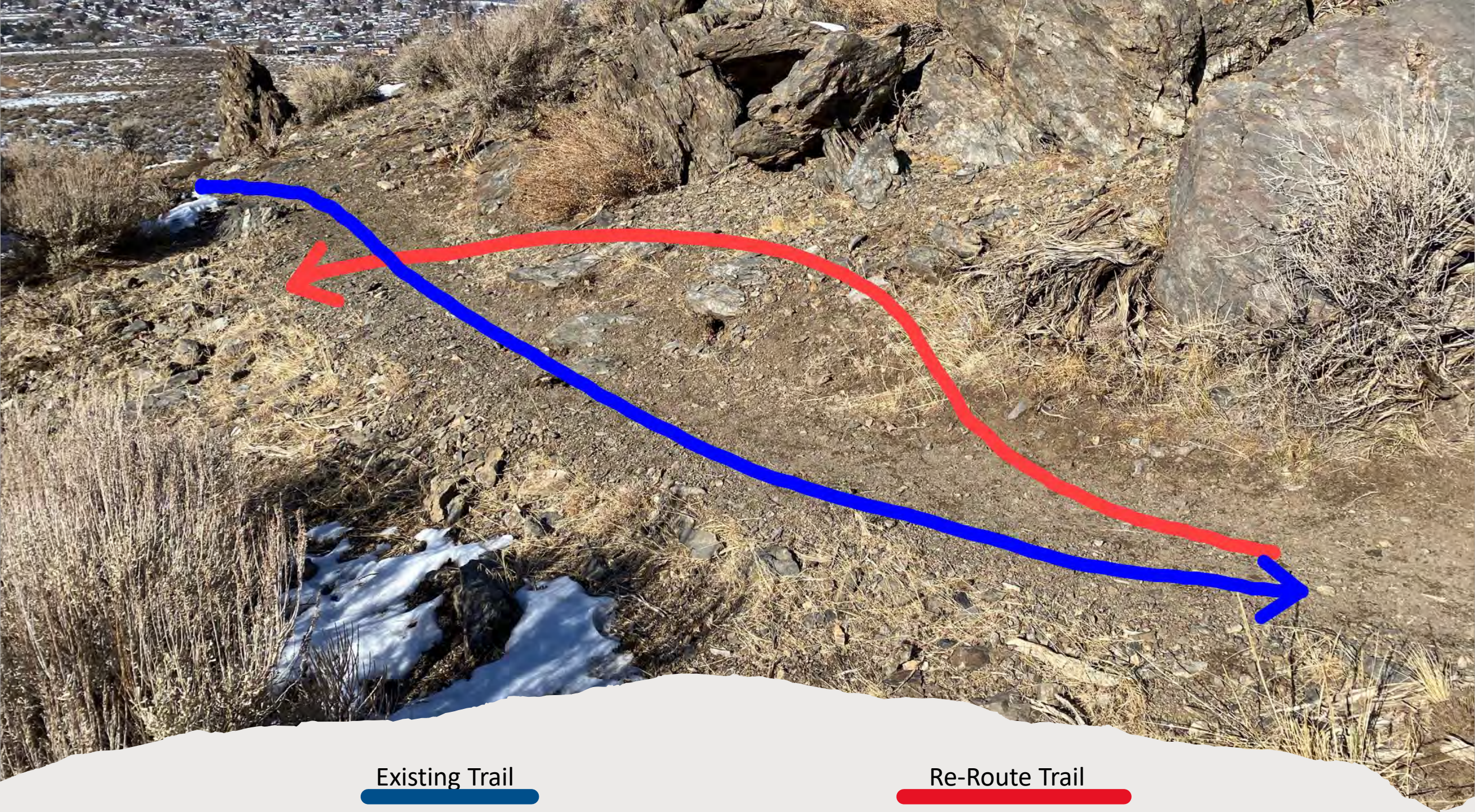
Project Map - Express Trail Re-Route



Project Location

Photos of existing
conditions





Existing Trail

Re-Route Trail







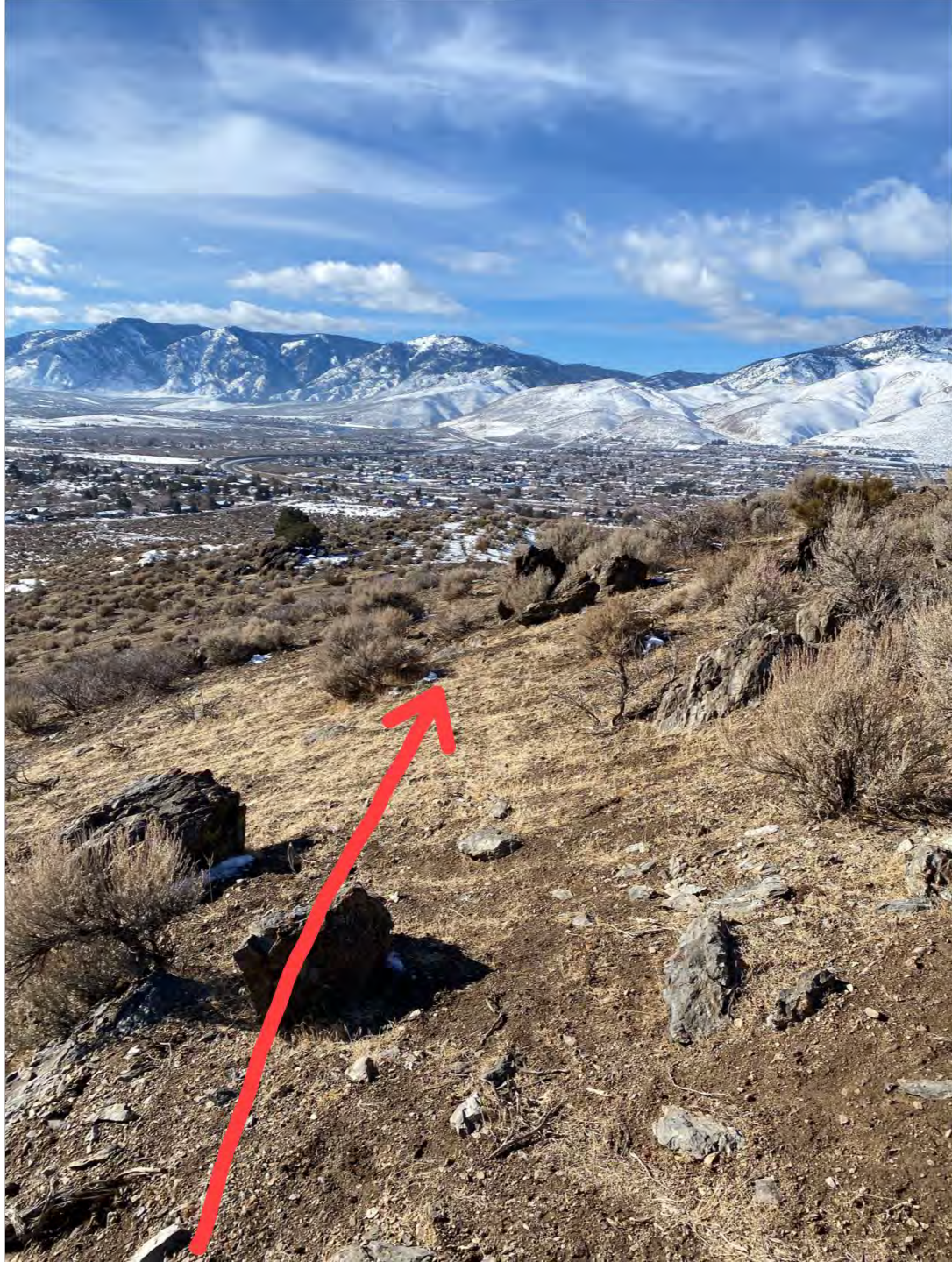


















How we will perform the project

- Tools: Hard Hats, Mcleods, Rock Bars, Loppers, Shovels, Rakes, Safety Glasses, Gloves, and a Wheelbarrow.





Safety procedures

- The PPE requires that you must have sturdy shoes, a long sleeve shirt, pants, gloves, helmet, safety glasses (RX glasses or sunglasses are OK), Also you would need sunscreen and water.
- We can provide helmets, and we will have some extra gloves



Thank you for you time
and consideration.

Any Questions?